

# COYOTE™

Travel Trailers

by K-Z



Welcome to  
Coyote Country.



23CFK shown with Plum décor



## Affordability never looked this good...

Designed and built with K-Z integrity, the Coyote travel trailer offers you all of the basics and more. With some models sleeping up to ten people comfortably, there's plenty of room for family and friends to get away from it all.



Attractively decorated with plenty of room to move around, from the oak framed cabinet doors to the Teflon™ cabinet roller guides, Coyote is a great value.

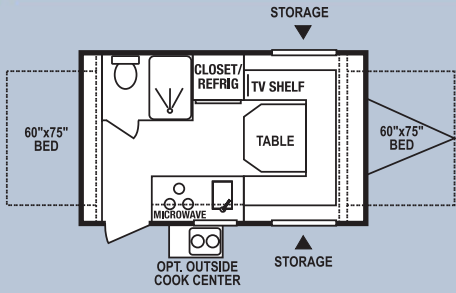


Enjoy a relaxing shower in the privacy of your Coyote™, or if you play too hard, you may want to use the optional exterior shower before you come in.

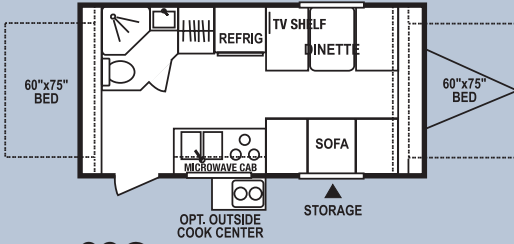


With space saving features such as overhead cabinets, removable dinette table and plenty of closet storage, you can take a few extra items with you and enjoy!

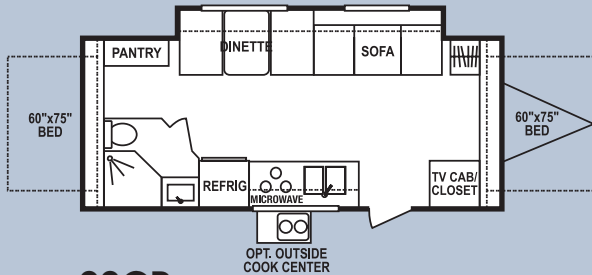
# Coyote Floorplans



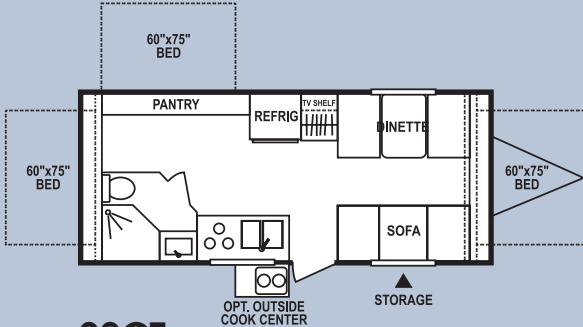
**16C** • UVW 2854 • Dry Hitch Wt. 380 • NCC 946 • Length 17'7"



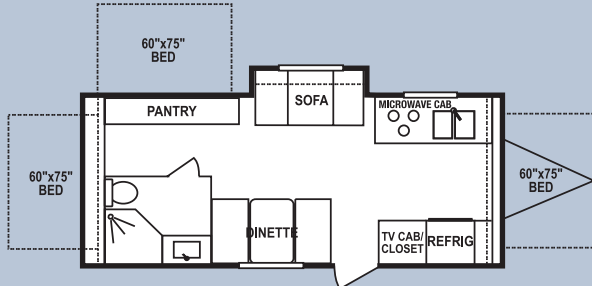
**20C** • UVW 3405 • Dry Hitch Wt. 440 • NCC 2595 • Length 20'5"



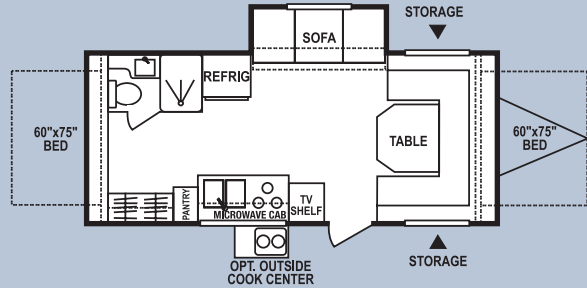
**22CP** • UVW 4370 • Dry Hitch Wt. 530 • NCC 1630 • Length 23'4"



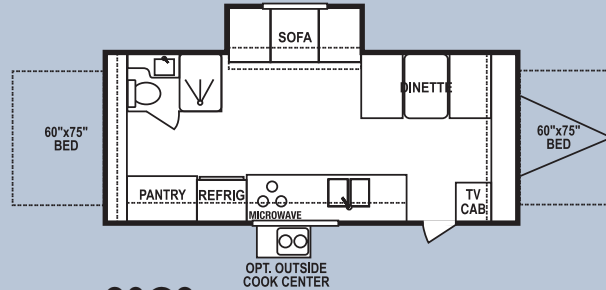
**22CT** • UVW 3650 • Dry Hitch Wt. 470 • NCC 2350 • Length 23'4"



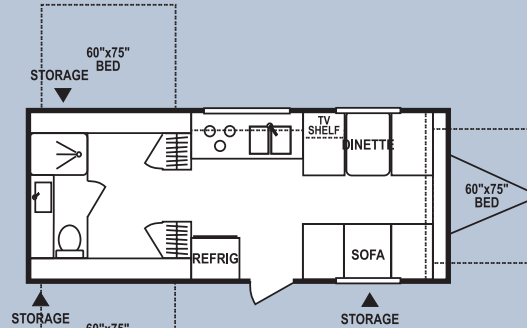
**23CFK** • UVW 4310 • Dry Hitch Wt. 700 • NCC 1690 • Length 24'6"



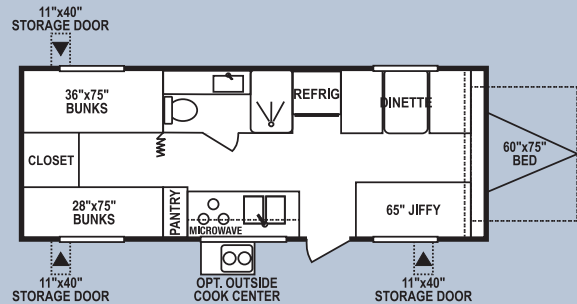
**23CMS** • UVW 4200 • Dry Hitch Wt. 570 • NCC 1800 • Length 24'6"



**23CS** • UVW 4351 • Dry Hitch Wt. 440 • NCC 1649 • Length 24'6"



**23CT** • UVW 3864 • Dry Hitch Wt. 510 • NCC 2136 • Length 23'4"



**25CBH** • UVW 4650 • Dry Hitch Wt. 600 • NCC 2350 • Length 25'3"

Cobalt



Granite



Plum



	16C	20C	22CP	22CT	23CFK	23CMS	23CS	23CT	25CBM
UVW (Unloaded Vehicle Wt.)	2854	3405	4370	3650	4310	4200	4351	3864	4650
Dry Hitch Wt.	380	440	530	470	700	570	440	510	600
Dry Axle Wt.	2500	2965	3840	3180	3610	3630	3911	3354	4050
NCC (Net Carrier Capacity)	946	2595	1630	2350	1690	1800	1649	2136	2350
GVWR	3826	6000	6000	6000	6000	6000	6000	6000	7000
Interior Height	78"	78"	78"	78"	78"	78"	78"	78"	78"
Exterior Height (w/ A/C)	121"	121"	121"	121"	121"	121"	121"	121"	121"
Exterior Width	96"	96"	96"	96"	96"	96"	96"	96"	96"
Exterior Length	17'7"	20'5"	23'4"	23'4"	24'6"	24'6"	24'6"	23'4"	25'3"
Fresh Water Cap. (gal.)	30	30	30	30	30	30	30	30	30
Waste Water Cap. (gal.)	32	32	32	32	32	32	32	32	32
Gray Water Cap. (gal.)	32	32	32	32	32	32	32	32	32
LPG Gas Cap. (lbs.)	40	40	40	40	40	40	40	40	40
Sleeping Cap.	6	8	8	10	10	8	8	10	10
Weight Cap. on Fold-Out Beds (lbs.)	1000	1000	1000	1000	1000	1000	1000	1000	1000
Furnace BTU's (1000's)	16	16	20	20	20	20	20	20	20
Tire Size	14"	14"	14"	14"	14"	14"	14"	14"	14"
Awning Size (optional)	11'	14'	14'	14'	14'	14'	14'	17'	18'

## Mandatory Living Package

- Norcold™ Refrigerator
- 3 Burner Range
- Power Range Hood w/Light
- 6 Gallon Water Heater
- Wired for A/C
- Wired for Microwave
- Coil Lights
- 20 Amp Converter
- 2-20 lb Gas Bottles
- 2x3 Floor Joist 16" O.C. (or less)
- Straight Axles
- 5/8" Plywood Tongue & Groove Floor
- 2x3 Crowned Roof Rafter 16" O.C.
- Complete R7 Insulation Package
- Royal Tuff-Ply Roof w/12-Year Manufacturer's Warranty
- 3/8" Decking on Roof
- Oak Framed Cabinet Doors
- Wood Drawer Sides
- Vinyl Wrapped Cabinet Stiles
- Removable Dinette Table
- Mini Blinds
- Furnace
- Smoke Detector
- LP Detector
- CO Detector
- 2 Rear Stabilizer Jacks
- 2 5/16" Coupler
- Teflon™ Cabinet Roller Guides
- Water Heater By Pass

## Optional Equipment

- Outside Grill
- Microwave
- 13,500 BTU A/C
- Stereo/CD Player
- Awning
- Monitor Panel
- TV Antenna
- Sunbrella Tents
- Gas Bottle Cover
- Sink Cover (1)
- 6 Cu.' Refrigerator (N/A on 16C)
- Oven
- Outside Cook Center (N/A on 23CT & 23CFK)
- Exterior Shower
- 2 Front Stabilizer Jacks
- Spare Tire
- Spare Tire Carrier
- Spare Tire Cover
- Power Slide
- CSA (Canadian required)

**2X2 WARRANTY** – The K-Z 2x2 Warranty is a manufacturer's warranty. Each K-Z product is warranted to the original purchaser for twenty-four (24) months from the original date of purchase. Coverage includes appliances, components, construction and FULL structure. Our warranty is also transferable within the first two (2) years for a small processing fee. For a copy of the warranty with full terms and conditions, ask your local K-Z Dealer or visit our web site at <http://www.kz-rv.com>.

**VEHICLE LOADING** – Every effort has been made to provide the greatest number of options for the recreational owner. Each owner is responsible to select loads allowing the recreational vehicle to remain within the manufacturer's specified chassis weight limits. Do not overload the recreational vehicle.

**UNLOADED VEHICLE WEIGHT (UVW)** – The typical weight of this trailer as built at the factory. The UVW does not include cargo, LP gas, fresh water, options or dealer-installed accessories.

**GROSS VEHICLE WEIGHT RATING (GVWR)** – The maximum permissible weight of the trailer, including the UVW plus passengers, all cargo, personal items, fluids, options and dealer-installed accessories. The GVRW is equal to or greater than the sum of the UVW and the NCC.

**NET CARRYING CAPACITY (NCC)** – The maximum weight of all passengers, personal items, fresh water, food, tools, LP gas, other cargo and dealer-installed accessories\* that can be carried by the trailer. NCC is equal to or less than GVWR minus UVW.

\* The addition of options will decrease the NCC.

It is important for your safety and enjoyment that your tow vehicle be adequately sized and equipped to tow and handle the GVWR of the RV you select. Review weights and rating of your tow vehicle and consult a competent advisor for questions or advice. Whether you are new to RVing or a seasoned veteran, get a feel for the performance of your tow vehicle and the RV together before heading out on the roadways. When you tow an RV, you must drive differently than you do when driving a single vehicle. Practice hooking up, driving, backing up and braking in a safe environment or seek out professional instruction.

See specification chart above. K-Z affixes a weight label to each new RV which lists weight information for that vehicle.

**NOTE:** This information is intended as a guide only. Weights of individual vehicles are approximate. Consult your Owner's Manual for complete loading, weighing and towing instructions. All weights may vary.

Awarded to K-Z  
Five Years in a Row!



Dealer:



**COYOTE**™

**RVIA**

K-Z • 9270 West U.S. 20 • Shipshewana, IN 46565  
E-Mail [kz@kz-rv.com](mailto:kz@kz-rv.com) • [www.kz-rv.com](http://www.kz-rv.com)