

KZ DURANGO

TRAVEL TRAILERS and FIFTH WHEELS



A Change of Pace... A Change of Scene



Helping You Get Away
From It All Since 1972

DURANGO



Durango, Colorado

Located in southwestern Colorado, it is one of nature's finest works. Once you've been there, you'll always want to go back.

Durango by KZ

One of KZ RV's finest works. Beautifully crafted inside and out. Once you've experienced one, you'll never be satisfied with anything else. Durango by KZ, *it lives up to it's name.*



D325SB



D325SB



An 8-cubic-foot fridge, oven and microwave, and plenty of countertop makes cooking time a breeze.

Compact, yet roomy, bathroom features mirrored medicine chest.



Full-length mirrored closet doors conceal ample storage space.



Built-in cabinetry provides a spot for your optional TV and a place for travel essentials.



D325BH



Warm oak cabinetry adds taste to your kitchen, which also features a built-in pantry.

Choose your seat – comfy sofa or relaxed dinette – both are window seats.

Bunk with your best pal – just like camp.

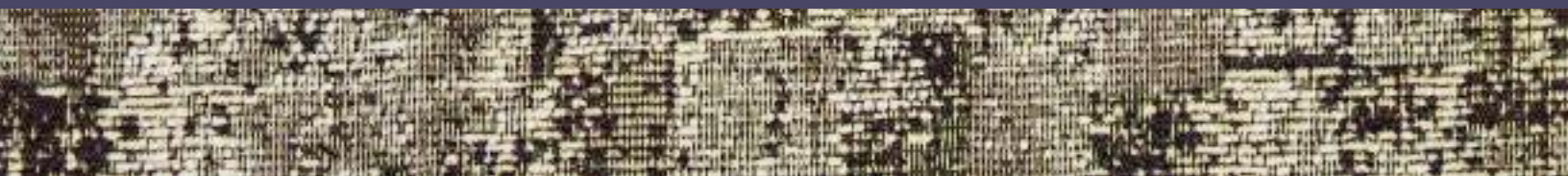


Posterest mattress gives a welcome rest.

Bedroom has TV stand, vanity, and sink.



DURANGO LX



D3354PX3



Cherry wood with tones as warm as the fireplace pull it all together in your dining/kitchen space. Upgraded appliances, tinted safety windows, and decorator coordinated fabrics and flooring suit your discriminating side.



DURANGO LX



Recline in comfort in plush chairs
in the living room alcove.

Décor Selections

Custom selected fabrics are not
only beautiful, they are durable
and comfortable.



D3354PX3

Upgrade to a king size bed for ultimate comfort.

The master bedroom is steps away from the living space.



Built-in vanity and TV stand provide secure storage.

Stand up profile shower features tempered glass doors.



Regal



Mist



Aspen



DURANGO and DURANGO LX Features



Mirrored cabinet conceals unit's electronics control panel



LP/CO/Smoke Detectors in all units

Speaker:
5.1 surround
sound speakers



In-floor steel security lock box (FW's only)



Easy access to central vac connection (optional) and electrical fuse panel



Pass-thru storage compartment/hidden under-floor makes it easy and safe to store your gear



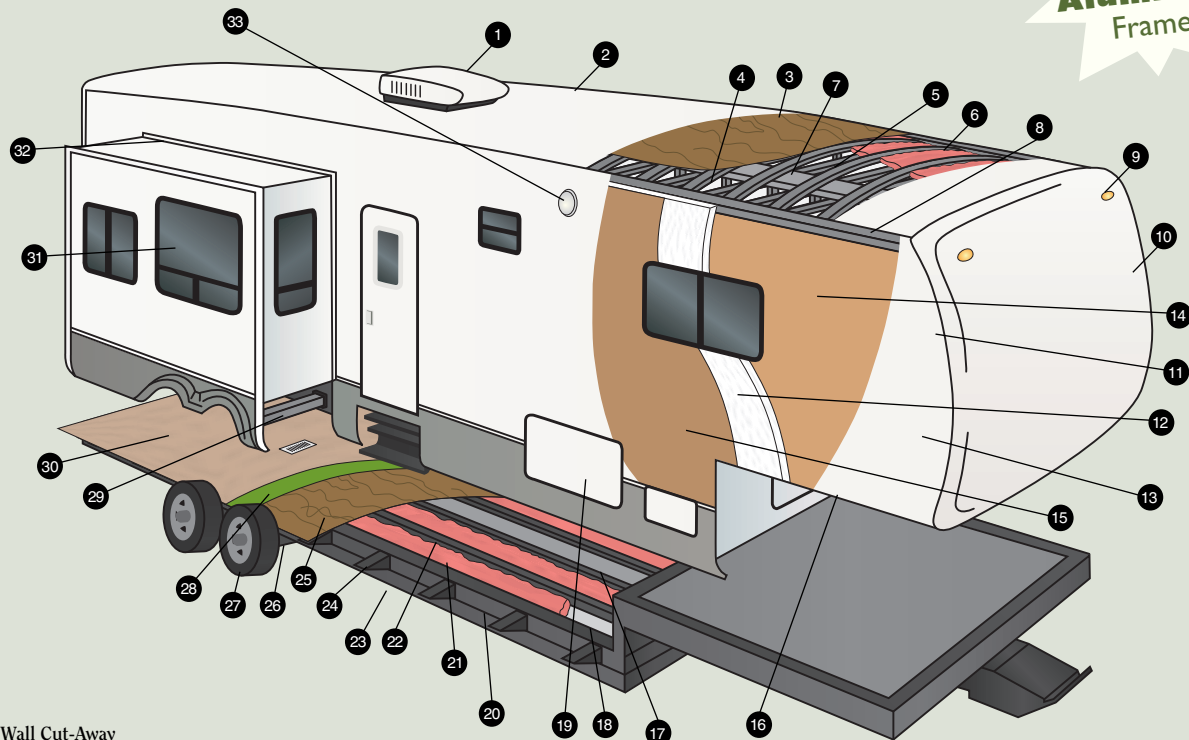
Back door storage compartment with bunk down (standard on 315BHS)



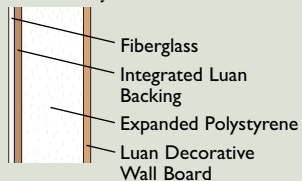
Back door storage compartment with bunk up (standard on 315BHS)

Cut-Away Features

Total Aluminum Frame



Wall Cut-Away



- 1 15,000 BTU A/C
- 2 TPO Vinyl Roof
- 3 3/8" Decking (fully walk on)
- 4 Vinyl Interior Ceiling Panel
- 5 4 1/2" Aluminum Truss Rafters, 16" O.C.
- 6 R-14 Batten Insulation (R21 with Flex Foil)
- 7 Insulated Ductwork
- 8 Heavy Duty Aluminum Headers
- 9 Exterior Clearance and Brake Lights
- 10 One-Piece Fiberglass Front Cap
- 11 Aluminum Frame Front and End Walls
- 12 Expanded Polystyrene - R11
- 13 Fiberglass Exterior with Integrated Luan Backing
- 14 1/8" Luan Decorative Wall Board
- 15 1/8" Luan Wall Board
- 16 3" Aluminum Stringer
- 17 Residential Style Ducted Heat Run in Floor
- 18 Darco® Moisture Barrier
- 19 Large Capacity Pass-Through Exterior Storage with Radius Doors Front and Side for Easy Access
- 20 Heavy Duty I-Beam Frame Construction
- 21 R-7 Batten Insulation (R12 with Flex Foil)
- 22 2x3 Double Welded Aluminum Floor Joists, 16" O.C.
- 23 Heated & Enclosed Underbelly
- 24 Fully Welded Outriggers
- 25 5/8" Tongue and Groove Plywood
- 26 Heavy Duty Leaf Springs
- 27 Heavy Duty Steel Wheels with Trim Rings and Center Caps
- 28 Residential Style Carpet Pad
- 29 Rack and Pinion Electric Slide with Manual Override with 2x3 Box Tube Slide Out Ram
- 30 28 oz. Residential Carpet or Linoleum
- 31 Tinted Safety Glass Windows
- 32 Triple Sealed Slide Outs
- 33 Exterior Security/Scare Lights

Because it Rains!



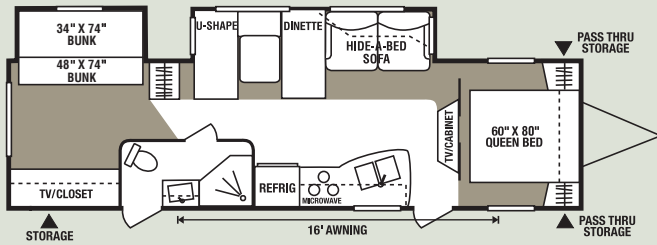
Here at K-Z we know a little bit about camping, actually we know a lot about camping. One thing you can count on, it will rain. We randomly test our K-Z campers from every product line in our state of the art rain booth. The rain may spoil your fun outside, but it won't inside.



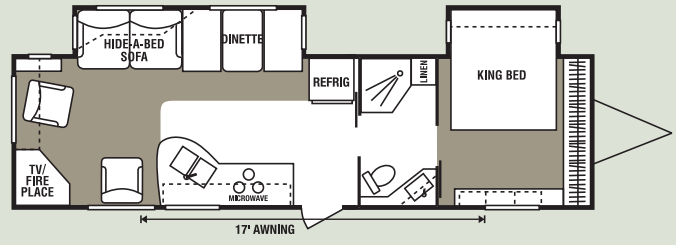
Another KZ standard – newly designed drip rails and spouts keep the water flowing away from the sidewalls.

DURANGO Travel Trailer and Fifth Wheel Floor Plans

Travel Trailers

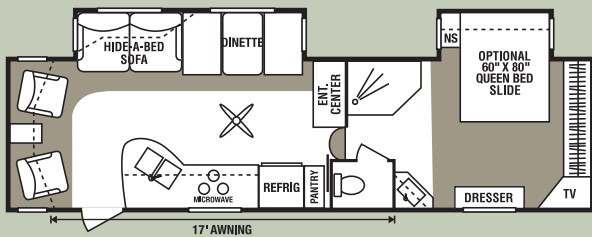


D320BH • UVW 7820 • Dry Hitch Wt. 787 • NCC 2180 • Length 35'6"

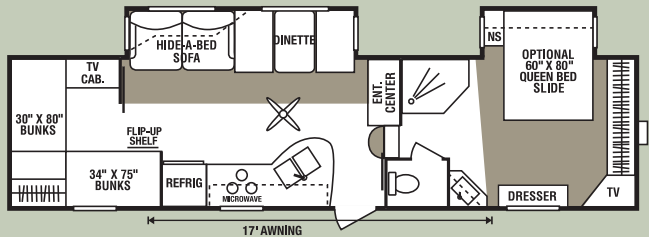


D320RE • UVW 7857 • Dry Hitch Wt. 1074 • NCC 2143 • Length 35'6"

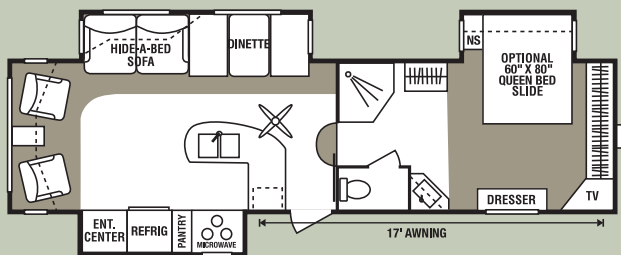
Fifth Wheels



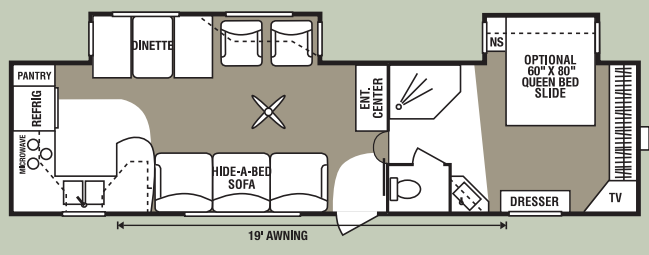
D285RL • UVW 8053 • Dry Hitch Wt. 1572 • NCC 2447 • Length 30'9"



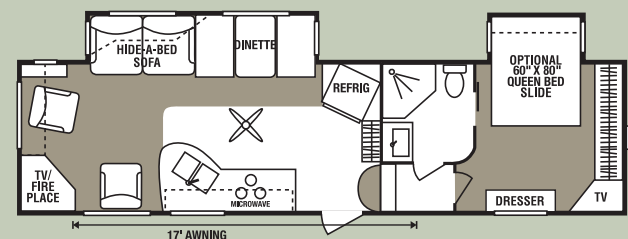
D315BH • UVW 8825 • Dry Hitch Wt. 1777 • NCC 1675 • Length 34'5"



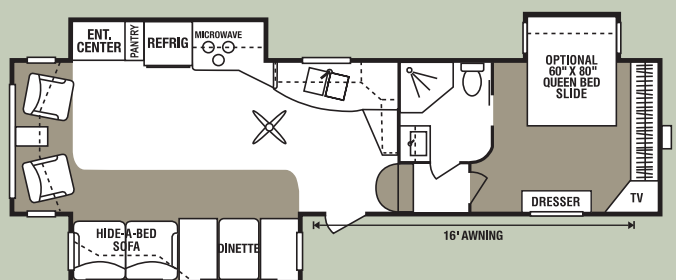
D305KS3 • UVW 9084 • Dry Hitch Wt. 1803 • NCC 1416 • Length 32'



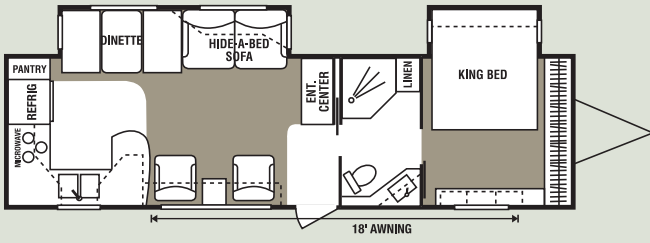
D315RK • UVW 8348 • Dry Hitch Wt. 1637 • NCC 1652 • Length 32'6"



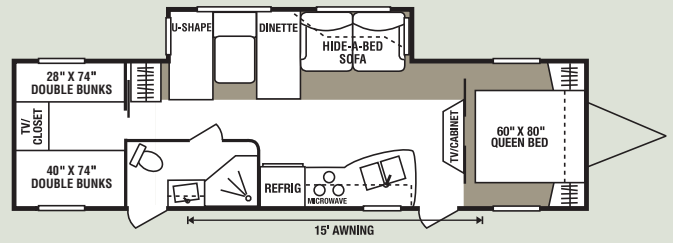
D305SB • UVW 8257 • Dry Hitch Wt. 1703 • NCC 2243 • Length 32'9"



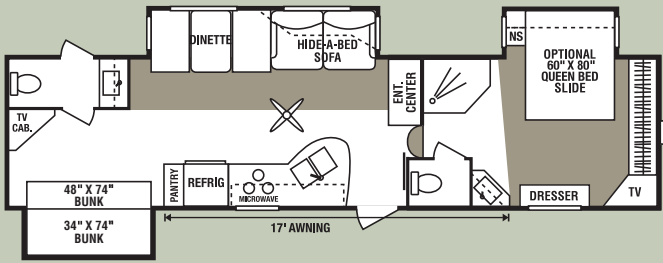
D325SB • UVW 9427 • Dry Hitch Wt. 1773 • NCC 1073 • Length 34'5"



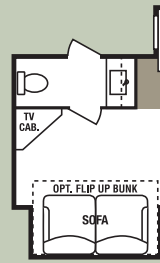
D321RK • UVW 7953 • Dry Hitch Wt. 947 • NCC 2547 • Length 35'6"



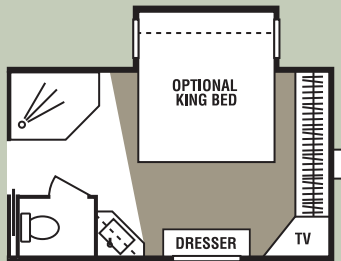
D324BH • UVW 7392 • Dry Hitch Wt. 1077 • NCC 2608 • Length 35'7"



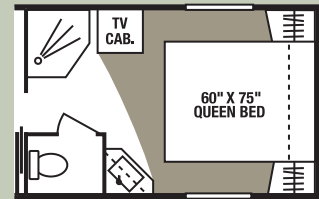
D325BH • UVW 9830 • Dry Hitch Wt. 1986 • NCC 2070 • Length 34'2"



D325BH • Flip Bunk Opt w/Jiffy Under



• King Bed Option



• Queen Bed Regular

DURANGO

Fifth Wheels

Travel Trailers

	D285RL	D305KS	D305SB	D315BH	D315RK	D325BH	D325SB	D320RE	D320BH	D324BH	D321RK
UVW (Unloaded Vehicle Wt.)	8053	9084	8257	8825	8348	9830	9427	7857	7820	7392	7953
Dry Hitch Wt.	1572	1803	1703	1777	1637	1986	1773	1074	787	1077	947
Dry Axle Wt.	6481	7281	6554	7048	6711	7844	7654	6783	7033	6315	7006
NCC (Net Carrier Capacity)	2447	1416	2243	1675	1652	2070	2673	2143	2180	2608	2547
GVWR	10500	10500	10500	10500	10000	11900	12000	10000	10000	10000	10500
Exterior Height	154"	154"	154"	154"	154"	154"	154"	136"	136"	136"	136"
Exterior Width	96"	96"	96"	96"	96"	96"	96"	96"	96"	96"	96"
Exterior Length	30'9"	32'	32'9"	34'5"	32'6"	34'2"	34'5"	35'6"	35'6"	35'7"	35'6"
Refrigerator (cu. feet)	8	8	8	8	8	8	8	8	8	8	8
Water Htr Cap. (gal. G/E w/ DSI)	10	10	10	10	10	10	10	10	10	10	10
Fresh Water Cap. (gal.)	55	55	55	55	55	55	55	55	55	55	55
Waste Water Cap. (gal.)	50	50	50	50	50	50	50	50	50	50	50
Gray Water Cap. (gal.)	50	50	50	50	50	50	50	50	50	50	82
LP Gas Cap. (lbs.)	60	60	60	60	60	60	60	60	60	60	60
Furnace BTUs (1,000's)	30	30	30	30	30	30	30	30	30	30	30
Tire Size	15"	15"	15"	15"	15"	15"	16"	15"	15"	15"	15"
Awning	17'	17'	17'	17'	19'	17'	15'	17'	16'	15'	18'

Comfort Pack (FORCED OPTION)

- Shocks
- Stabilizer Jacks
- Ladder
- Front Cap
- Awning
- Spare Tire & Hoist (FW)/ Carrier (TT)
- Enclosed Pin Box (FW)
- Security Light on Door Side
- Skylight Over Tub
- Pillows for Sofa
- Wired for Satellite
- 6 Sided Aluminum Frame
- Heated Tanks and Enclosed Underbelly
- Tinted Safety Windows
- Black Tank Flush System
- Power Jacks (FW)
- 8 Cu. Refer w/Raised Panel Insert
- Posterest Mattress
- TV
- Assist Grab Handle
- Night Shades
- AM/FM/CD/DVD Player with 5.1 Surround Sound
- Hide-A-Bed
- 15,000 BTU A/C
- Stand Up Profile (FW)
- Porcelain Toilet
- Ceiling Fan (FW)
- 10 Gallon Gas/Electric DSI Water Heater

Additional Options

- Bedroom Slide (Forced on 305KS, 325BH & 325SB)
- Central Vac
- Fantastic Fan (LR or BR)
- Fireplace
- King Size Bed (N/A on 305SB & 325SB)
- Outside Entertainment Center
- Outside Grill
- Recliner 1 or 2
- Table & 4 Chairs w/Leaf
- Thermal Pane Windows ❄️/☀️
- 16" Tires w/12,000 lb. Axles (Forced on 325SB)
- Aluminum Wheels 4
- 50 Amp Service
- 2nd A/C 13,500 BTU in Bedroom
- Solid Wall w/Swing Door (325BH only)
- (Extra large)Countertop Extension
- Side Winder Hitch
- Flex Foil Insulation (R21 roof, R12 floor & R13 front and rear) ❄️/☀️
- Power Awning

❄️/☀️ We at KZ realize that you may travel within the northern and southern climates and added R value is not just a luxury but a necessary option for your comfort. So we decided to option the flex foil and thermal panel windows on the Durango.

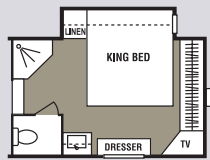
DURANGO LX

Fifth Wheels

	D3254PX3	D3255PX3	D3354PX3	D3551PX4	D3553PX4	D3556PX4
UVW (Unloaded Vehicle Wt.)	9487	9398	9570	10110	10390	10810
Dry Hitch Wt.	1907	1942	1935	1928	1876	1943
Dry Axle Wt.	7580	7456	7635	8182	8514	8868
NCC (Net Carrier Capacity)	4313	4402	4230	3690	3410	2990
GVWR	13800	13800	13800	13800	13800	13800
Exterior Height	154"	154"	154"	154"	154"	154"
Exterior Width	96"	96"	96"	96"	96"	96"
Exterior Length	34'10"	34'9"	34'11"	37'	37'	38'10"
Refrigerator (cu. feet)	8	8	8	8	8	8
Water Heater Cap. (gal. - G/E with DSI)	10	10	10	10	10	10
Fresh Water Cap. (gal.)	55	55	55	55	55	55
Waste Water Cap. (gal.)	50	50	50	50	50	50
Gray Water Cap. (gal.)	50	50	50	50	50	50
LP Gas Cap. (lbs.)	60	60	60	60	60	60
Furnace BTUs (1,000's)	30	30	30	30	30	30
Tire Size	16"	16"	16"	16"	16"	16"
Awning	16'	15'	19'	17'	16'	19'

Comfort Pack (FORCED OPTION)

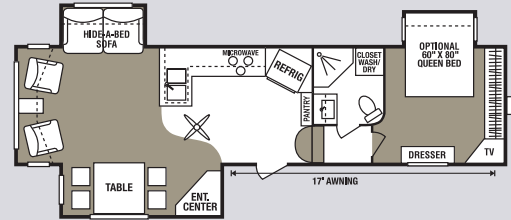
- Shocks
- Stabilizer Jacks
- Ladder
- Front Cap
- Awning
- Spare Tire & Hoist
- Enclosed Pin Box
- Security Light on Door Side
- Skylight Over Tub
- Pillows for Sofa
- Wired for Satellite
- Aluminum Wheels
- 6 Sided Aluminum Frame
- Heated Tanks & Enclosed Underbelly
- Tinted Safety Windows
- Black Tank Flush System
- Power Jacks
- 8 Cu. Refer
- Posterest Mattress
- TV
- Assist Grab Handle
- Night Shades
- AM/FM/CD/DVD Player with 5.1 Surround Sound
- Hide-A-Bed
- 15,000 BTU A/C
- Stand Up Profile
- Porcelain Toilet
- Ceiling Fan
- 10 Gallon Gas/Electric DSI Water Heater
- Cherry Wood Cabinetry
- Stainless Steel Oven & Microwave
- Raised Panel Refer Door
- Table & 4 Chairs w/Leaf
- Recliners
- Fluorescent Lights in Living Room
- 50 Amp Service



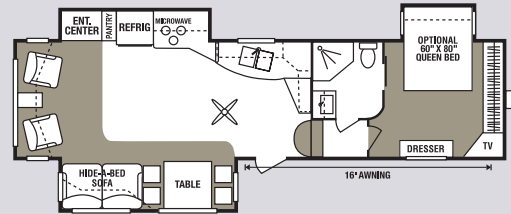
King Bed Option
(D3551PX4 & D3553PX4 only)

Additional Options

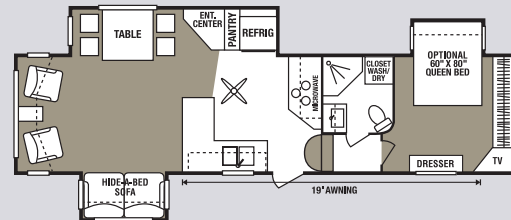
- Central Vac
- Fantastic Fan (LR or BR)
- Fireplace
- King Size Bed (3551PX4 & 3553PX4 only)
- Outside Entertainment Center
- Outside Grill
- Thermal Pane Windows */*
- Plumb for Washer/Dryer (3254PX3, 3354PX3, 3551PX3 & 3553PX4 w/o King Opt)
- Side Winder Hitch
- Flex Foil Insulation (R21roof, R12 floor & R13 front and rear) */*
- Power Awning



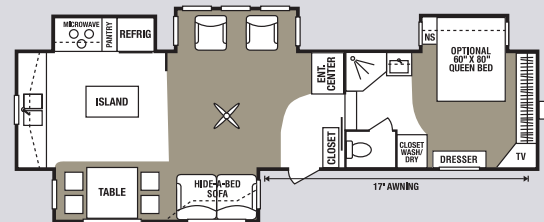
D3254PX3 • UVW 9487 • Dry Hitch Wt. 1907 • NCC 4313 • Length 34'10"



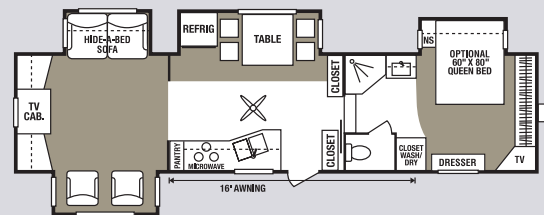
D3255PX3 • UVW 9398 • Dry Hitch Wt. 1942 • NCC 4402 • Length 34'9"



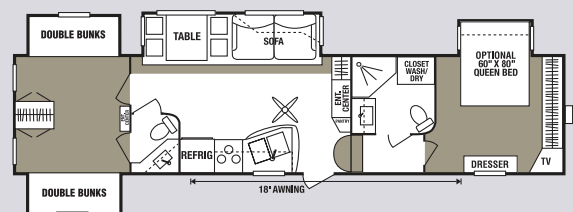
D3354PX3 • UVW 9570 • Dry Hitch Wt. 1935 • NCC 4230 • Length 34'11"



D3551PX4 • UVW 10110 • Dry Hitch Wt. 1928 • NCC 3690 • Length 37'



D3553PX4 • UVW 10390 • Dry Hitch Wt. 1876 • NCC 3410 • Length 37'



D3556PX4 • UVW 10810 • Dry Hitch Wt. 1943 • NCC 2990 • Length 38'10"

2X2 WARRANTY – The K-Z 2x2 Warranty is a manufacturer's warranty. Each K-Z product is warranted to the original purchaser for twenty-four (24) months from the original date of purchase. Coverage includes appliances, components, construction and FULL structure. Our warranty is also transferable within the first two (2) years for a small processing fee. For a copy of the warranty with full terms and conditions, ask your local K-Z Dealer or visit our web site at <http://www.kz-rv.com>.

VEHICLE LOADING – Every effort has been made to provide the greatest number of options for the recreation vehicle owner. Each owner is responsible to select loads allowing the recreational vehicle to remain within the manufacturer's specified chassis weight limits. Do not overload the recreational vehicle.

UNLOADED VEHICLE WEIGHT (UVW) – The typical weight of this trailer as built at the factory. The UVW does not include cargo, LP gas, fresh water, options or dealer-installed accessories.

GROSS VEHICLE WEIGHT RATING (GVWR) – The maximum permissible weight of the trailer, including the UVW plus passengers, all cargo, personal items, fluids, options and dealer-installed accessories. The GVWR is equal to or greater than the sum of the UVW and the NCC.

NET CARRYING CAPACITY (NCC) – The maximum weight of all passengers, personal items, fresh water, food, tools, LP gas, other cargo and dealer-installed accessories* that can be carried by the trailer. NCC is equal to or less than GVWR minus UVW.

* The addition of options will decrease the NCC.

It is important for your safety and enjoyment that your tow vehicle be adequately sized and equipped to tow and handle the GVWR of the RV you select. Review weights and rating of your tow vehicle and consult a competent advisor for questions or advice. Whether you are new to RVing or a seasoned veteran, get a feel for the performance of your tow vehicle and the RV together before heading out on the roadways. When you tow an RV, you must drive differently than you do when driving a single vehicle. Practice hooking up, driving, backing up and braking in a safe environment or seek out professional instruction.

See specification chart above. K-Z affixes a weight label to each new RV which lists weight information for that vehicle.

NOTE: This information is intended as a guide only. Weights of individual vehicles are approximate. Consult your Owner's Manual for complete loading, weighing and towing instructions. All weights may vary.

Awarded to K-Z
six years in a row.



DURANGO™

K-Z • 0985 N 900 W • Shipshewana, IN 46565

E-Mail kz@kz-rv.com • www.kz-rv.com

Dealer:

Due to continual research and advances, manufacturer reserves the right to change specifications, design, price and equipment without notice, and assumes no responsibility for any error in this literature. Some items shown are not included as standard or optional equipment.
©2007K-Z

1/1/08 25M

