

ESCALADE

FIFTH WHEELS



LIVING ROOM



▲ ESCALADE SHOWN WITH FULL BODY PAINT



ESCALADE TAKES YOU TO THE PINNACLE OF LEISURE LIVING WITH LUXURIOUS INTERIORS AND SPACIOUS FLOOR PLANS THAT RISE ABOVE THE ORDINARY. THESE EXQUISITE FIFTH WHEELS LAVISH YOU WITH AMENITIES AND FEATURES TO MAKE THE RV LIFE THE BEST IT CAN BE. INNOVATION COUPLED WITH PRACTICAL DESIGN CREATES AN UNMATCHED LEVEL OF COMFORT AND CONVENIENCE.

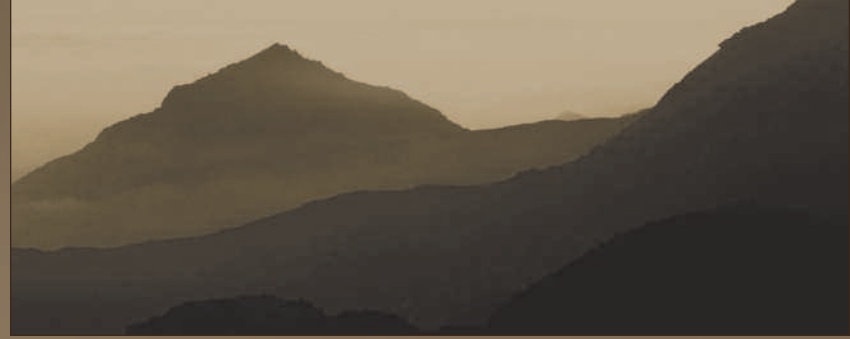
▲ 37 REB FLOOR PLAN SHOWN WITH SABLE DECOR, GLAZED MAPLE, AND OPTIONAL 40" LCD TV

revelations of beauty

KITCHEN

sublime design

▼ 37 SB SHOWN WITH OPTIONAL WATER DISPENSER AND KITCHEN ISLAND





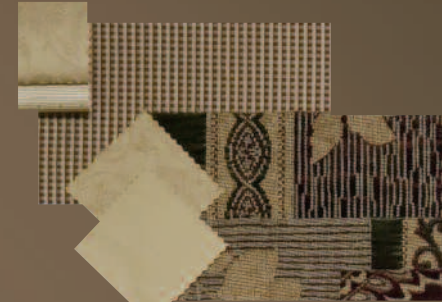
▲ 37 REB FLOOR PLAN SHOWN WITH GLAZED MAPLE CABINETRY AND SABLE DECOR

▶ THE LIVING ROOM TABLE FEATURES A LEAF, LIFT-UP STORAGE AND SILVERWARE DRAWER.

The Escalade is adorned with all the amenities of home!



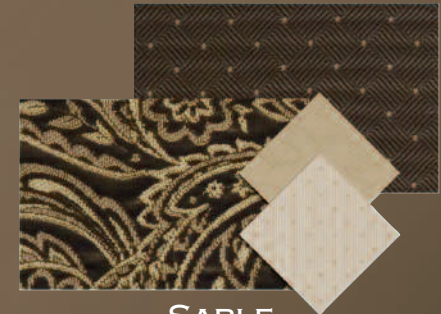
DÉCORS



CABERNET



CASHMERE



SABLE

ESCALADE



▲ ESCALADE SHOWN WITH STANDARD PARTIAL PAINT.



CUT-A-WAY HIGHLIGHT FEATURES

1. 15K low profile A/C
2. One piece seamless Royal Tuff-Ply roof
3. 1/2" plywood roof decking
4. R-7 Flex foil insulation
5. R-14 fiberglass batten insulation (total roof R-21)
6. 5-3/4" aluminum truss rafters - 16" O.C.
7. Soft touch vinyl ceiling with luan backing
8. Insulated ductwork
9. One piece gel coat fiberglass cap-front and rear. One piece fiberglass undercap
10. Exterior security lights
11. Eclipse electric awning
12. Tinted safety glass windows
13. Gel coat fiberglass exterior with integrated luan backing
14. Premium exterior partial paint package with raised Escalade logo
15. Heavy-duty aluminum headers
16. 2" x 2" aluminum double welded wall studs - 16" O.C.
17. R-7 fiberglass batten wall insulation
18. R-7 Flex foil (walls total R-14)
19. Decorative luan interior wall board
20. Triple seal flush mount slide-out
21. Rack and pinion electric slide with manual override and 3" x 3" box tube slide-out ram
22. 30" entry door
23. Large capacity pass-through storage with EZ access door
24. High grade residential carpet
25. Residential style carpet pad
26. Armstrong linoleum
27. 5/8" tongue and groove plywood floor decking
28. 2" x 3" aluminum double welded floor joists - 16" O.C.
29. R-14 fiberglass batten insulation
R-7 fiberglass batten insulation in sub-floor
R-7 Flex foil insulation (total floor R-28)
30. Darco moisture barrier
31. Strong welded frame structure. 18" total height (10" "I" beam and 8" "box" beam)
32. Easy access exterior battery compartment
33. Fully enclosed underside
34. Heavy-duty 16" 8 lug wheels, 7000# axles with easy lube hubs
35. Easy access to the furnace, converter, water pump, and other mechanical items
36. MOR/ryde suspension

BEDROOM AND BATHROOM



▲ 37 SB FLOOR PLAN SHOWN WITH CASHMERE DECOR AND CHERRY CABINETRY

extravagant comfort



▲ LARGE CORNER SHOWER WITH SLIDING GLASS DOOR IS A STANDARD BATHROOM FEATURE.

*relaxation
at its best!*



▲ HANDSOME OVERHEAD BEDROOM CABINERY FEATURES A 19" LCD TV.



▲ 36 KSB FLOOR PLAN SHOWN WITH SABLE DECOR AND GLAZED MAPLE CABINERY

EXTERIOR FEATURES



LARGE EXTERIOR STORAGE COMPARTMENT INCLUDES HANDY ACCESS DOOR TO THE FURNACE AND VACUUM SYSTEM. SHOWN WITH OPTIONAL ROLL-OUT TRAY.



EASY TO FILL PROPANE BOTTLES ON OUR CUSTOM SWIVEL-OUT TRAY



PAINT MATCH SLIDE-OUTS INCLUDED WITH AVAILABLE FULL BODY PAINT PACKAGE



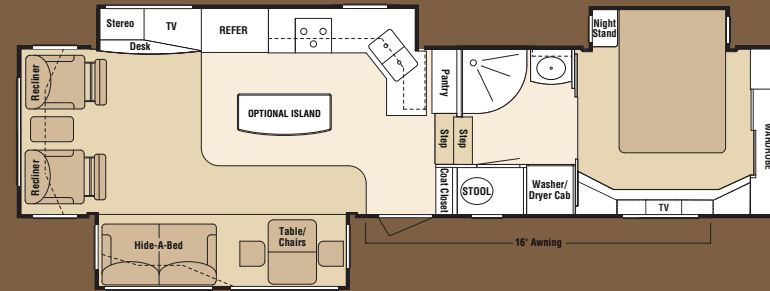
HEAVY-DUTY 7000# AXLES INCLUDE MOR/RYDE SUSPENSION AND G-RATED TIRES



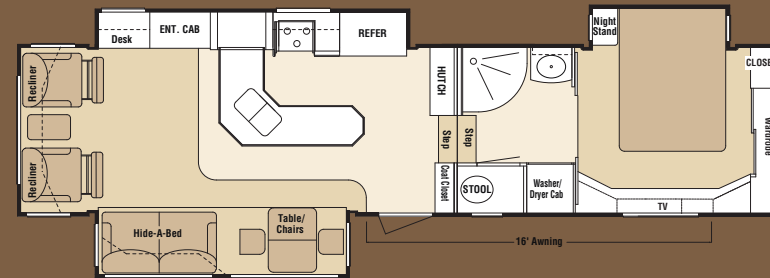
THE EXTERIOR WATER HOOK-UP CENTER INCLUDES AN OUTSIDE SHOWER FOR CONVENIENCE.

FLOOR PLANS

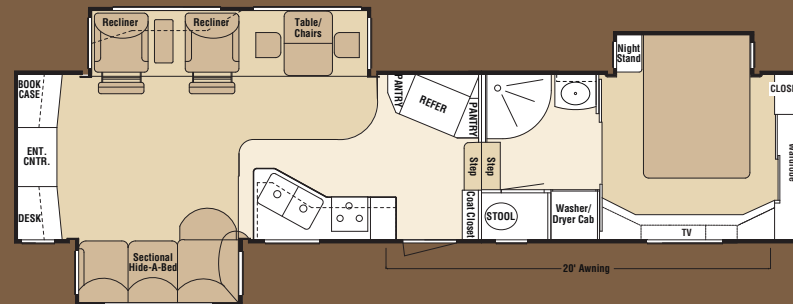
■ LINOLEUM ■ CARPET ■ FURNITURE



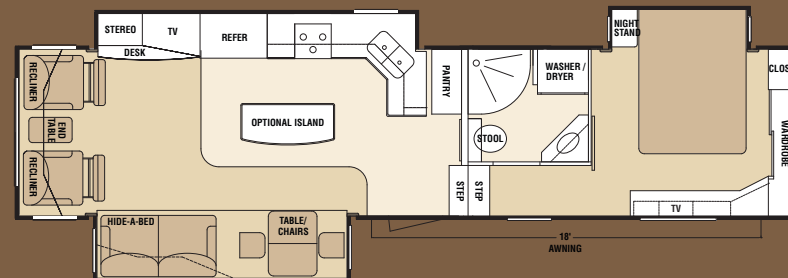
36 KSB



36 SKB



37 REB



37 SB

SPECIFICATIONS AND FEATURES

Escalade	36 KSB	36 SKB	37 REB	37 SB
UVW (Unloaded Vehicle Weight)*	13424	13625	13565	13671
Dry Hitch Weight	2442	2485	2195	2493
Dry Axle Weight	10982	11140	11370	11178
NCC (Net Carrying Capacity)	3376	3175	3235	3129
GVWR	16800	16800	16800	16800
Interior Height	93"	93"	93"	93"
Exterior Width	96"	96"	96"	96"
Exterior Length	38' 4"	38' 4"	39' 8"	38' 11"
Exterior Height with A/C	151"	151"	151"	151"
Fresh Water Capacity (gal)	55	55	55	55
Waste Water Capacity (gal)	50	50	50	50
Grey Water Capacity (gal)	88	50	88	88
Water Heater Capacity (gal – G/E w/DSI)	16	16	16	16
LP Gas Capacity (lbs.)	80	80	80	80
Furnace BTU's	42	42	42	42
Tire Size (G-Rated)	LT235-85R16	LT235-85R16	LT235-85R16	LT235-85R16
Axle Rating	(2) 7000	(2) 7000	(2) 7000	(2) 7000

* UVW does not include additional options.

INTERIOR FEATURES

- Solid Cherry or Glazed Maple Wood Choices
- All Cabinets Pre-Drilled and Screwed with Hidden European Style Hinges
- High Gloss Corian® Countertops/Kitchen and Lavatory
- Stainless Steel Recessed Sink with Covers in Kitchen
- Day/Night Shades
- Soft Touch Ceiling
- Mirrored Entry Closet with Grandfather Clock (N/A 37SB)
- Upgraded Window Treatments with Fabric and Wood Features
- Solid Wood Interior Assist Handle
- Waste Basket Accommodations in all Kitchens
- Designer Inspired Bedding with Deluxe Bedspread and Pillow Shams
- Brushed Nickel Cabinet Hardware
- Ball Bearing Full Extension Drawer Guides
- Solid Wood 6 Panel Commode Room and Living Area Door
- Corian® Bi-Fold Range Cover/Flush Mounted
- Solid Wood Crown Molding
- Solid Wood Vanity and Medicine Cabinet in Bath Area

APPLIANCES AND ELECTRONICS

- 12 Cu. Ft. Side x Side Refrigerator with Stainless Steel Front
- 30" Residential Stainless Steel High Line Over the Range Microwave.
- Pre-Wired for Satellite System
- 32" Sony® LCD HDTV in Living Area
- Sony® Stackable Stereo with Full Surround Sound System
- Sony® DVD Changer
- 22" Broiler Oven with Stainless Steel Front and 3-Burner Cook Top
- 19" LCD TV in Bedroom
- Dirt Devil® Central Vacuum with Built-In Dust Pan
- Full Featured Video Switching Control Center with Signal Amp.
- TV Antenna
- 2 Bedroom Speakers with On/Off Switch

ELECTRICAL

- Back-Lit Switches at Entry Door
- Overhead Brushed Nickel Ceiling Fan
- Convenient Electrical Command Center
- Fluorescent Lighting in Living Areas
- Halogen Accent Lighting
- Power Eclipse Awning
- 50 AMP Power Service with Detachable Cord
- 65 AMP Power Converter
- Recessed Entry Step Light
- Porch Light
- Telephone Jack at Recliners and Entertainment Area
- Designer Accent Light Package
- LED Running/Brake/Turn Signals
- High Output Back-Up Lights
- 4 Exterior Security Lights
- 12 Volt Deep Cycle Battery
- 120 Volt Exterior Outlet
- Hitch Light
- 12 Volt Battery Disconnect

FURNITURE

- Residential Style Hide-a-Bed Sofa
- (2) Recliners
- Solid Wood Hi/Lo Coffee Table
- "Flex Comfort" Bed Spring
- 80" Pillow Top Mattress
- Freestanding Dining Room Table with Fold-Up Leaf, Flip-Up Storage and Silverware Drawer
- Two High Back Solid Wood Dining Chairs and Two Folding Solid Wood Dining Chairs

BODY AND FRAME CONSTRUCTION

- All Aluminum Double Welded Cage Frame
- Gel Coat High Gloss Fiberglass Exterior Side Walls
- Premium Quality Painted Exterior Graphics
- 8 Lug HD Aluminum Wheels
- Roof Ladder
- (2) 40 lb. LP Bottles
- Tinted Skylight at Shower Area
- 18" "Box" beam/"I" Beam Stack Chassis
- 16" G-Rated Tires
- G-Rated Spare Tire with Hoist
- Independent Power Front Jacks with Snap Pins
- Power Rear Stabilizer System
- 7,000 lb. Axles with Easy Lube Hubs
- MOR/ryde Suspension System
- Fold-Out Entry Grab Handle
- 30" Entry Door
- 5/8 Tongue and Groove Plywood Floor Decking
- Extended Pin Box
- Fully Enclosed Underbelly
- Tinted Windows with Safety Glass
- 1/2" Plywood Roof Decking
- Fiberglass Front Cap, Front Under Cap and Rear Cap
- Pass-Through "Basement" Storage

PLUMBING/HEAT/VENTILATION/AC SYSTEMS

- Large One-Piece Fiberglass Corner Shower with Self Storing Shower Door
- Washer/Dryer Preparation with two 20 AMP Circuits
- Porcelain Toilet with Sprayer
- (16) Gallon Gas/Electric Hot Water Heater
- Black Tank Flush System
- Heated Grey, Black and Freshwater Tanks
- Exterior "Hook-Up" Center with Cable, Water and Phone Connections Along with an Exterior Shower.
- Winterization Package
- 15,000 Low Profile AC
- 42,000 BTU Furnace
- Preparation for 2nd AC in Bedroom
- (2) Fantastic Thermostat Controlled Ventilation Fans with Rain Sensor
- In Floor Ducted Heat System
- Solid Wood Furnace Return Air Cover
- Ducted AC Supply and Return

OPTIONS

- Fireplace
- 2nd 13.5 A/C in Bedroom
- Heat Pump Upgrade
- Convection Microwave
- Ice Maker with Water Dispenser in Door
- King Size Bed
- Infinity Ceiling Light
- 40" LCD TV Upgrade
- Door Bell
- Kitchen Island (36KSB/37SB Only)
- CSA (Canadian Required)
- Generator Prep.
- Disc Brakes
- Atwood Leveling System
- Thermo-Pane Windows
- Automatic Dome Satellite
- Power Cord Reel
- 5th Airborne Hitch
- Slide Out Covers
- Slide Out Patio Awning (Select Floor Plans)
- Awning Wind Sensor
- Roll Out Cargo Tray
- 2nd 12 Volt Battery
- Full Body Paint Package

The logo for Escalade Fifth Wheels is centered in the upper half of the page. The word "Escalade" is written in a large, stylized, metallic font with a 3D effect. Below it, the words "FIFTH WHEELS" are written in a smaller, clean, sans-serif font. The background is a misty, mountainous landscape at dawn or dusk.

Escalade

FIFTH WHEELS



KZRV, L.P.
0985 NORTH 900 WEST
SHIPSHEWANA, IN 46565
PH: 260-768-4016
WWW.KZ-RV.COM

Due to continual research and advances, manufacturer reserves the right to change specifications, design, price and equipment without notice, and assumes no responsibility for any error in this literature. Some items shown are not included as standard or optional equipment. Copyright 2007 KZRV, L.P.



Dealer: