

MONTEGO BAY® PREMIUM FIFTH WHEELS



# Montego Bay<sup>®</sup> by KZ

PREMIUM FIFTH WHEELS







LIVING ROOM | 37KEM



37CKM | LIVING ROOM

MONTEGO BAY®'S  
TWO YEAR LIMITED  
WARRANTY IS  
FULL TIME FRIENDLY

**Room with a view.**  
All Montego Bay® fifth wheels feature extra deep tinted windows and night shades. You can decide when you would like to bring the outdoors in.

37KEM shown in Fresco décor, with optional 12 cu. foot refrigerator and fireplace.



Warm and inviting, the living room of the Montego Bay® 37CKM is a great place to relax and unwind. Shown in Sandlewood décor featuring the optional fireplace and additional desk chair.

The Montego Bay® 37CKM features a roomy "L" sofa with a hidden air sleep system.





DINING & KITCHEN 37CKM



37KEM DINING & KITCHEN

Shown with optional kitchen island, the Montego Bay® 37KEM features mission inspired cabinetry and ample space for entertaining.

Featuring Corian® solid surface countertops and solid hardwood cabinetry, the Montego Bay® 37CKM offers substance and uncommon value.

Truly a chef's delight, the kitchen in the Montego Bay® 37CKM features ample storage and counter space.

PREMIUM

37KEM shown with optional stack washer/dryer, the Montego Bay® laundry center makes wash day less of a chore. (right)

Kitchen shown with "flip up" counter in down position. (left)

FEATURES







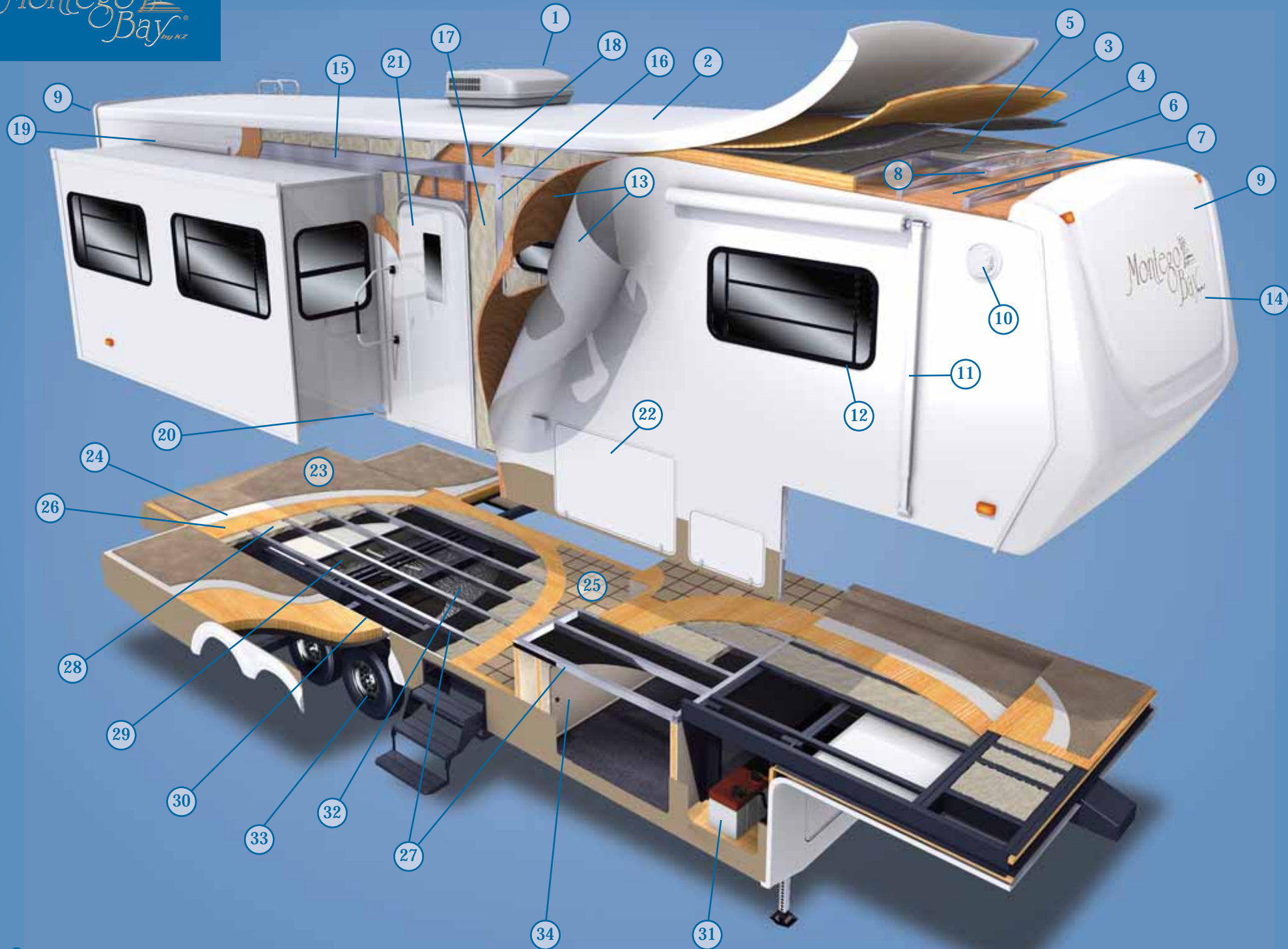
Featuring furnishings inspired by residential designers, the Montego Bay® bedroom is your private get away. (Shown with optional 19" LCD TV.) All Montego Bay® fifth wheels feature a standard queen size bed. (A king size bed is optional on all Montego Bay® floor plans.)



The Montego Bay® 37CKM features a double entry private bath.

BEDROOM | 37CKM





## CUT-A-WAY HIGHLIGHT FEATURES

- |   |  |
|---|--|
| <ol style="list-style-type: none"> <li>1. 15K A/C</li> <li>2. One Piece Seamless Royal Tuff-Ply Roof</li> <li>3. 1/2" Plywood Roof Decking</li> <li>4. R-7 Flex Foil Insulation</li> <li>5. R-14 Fiberglass Batten Insulation (Roof Total R-21)</li> <li>6. 5-3/4" Aluminum Truss Rafters - 16" O.C.</li> <li>7. Decorative Luan Ceiling Panel</li> <li>8. Insulated Ductwork</li> <li>9. One Piece Gel Coat Fiberglass Cap Front and Rear</li> <li>10. Exterior Security Lights</li> <li>11. Awning</li> <li>12. Deep Tinted Safety Glass Windows</li> <li>13. Gel Coat Fiberglass Exterior with Integrated Luan Backing</li> <li>14. Premium Exterior Graphics Package with Raised Montego Bay® Logo</li> <li>15. Heavy-Duty Aluminum Headers</li> <li>16. 2" x 2" Aluminum Double Welded Wall Studs - 16" O.C.</li> <li>17. R-7 Fiberglass Batten Wall Insulation</li> <li>18. Decorative Luan Interior Wall Board</li> <li>19. Triple Seal Flush Mount Slide-Out</li> </ol> | <ol style="list-style-type: none"> <li>20. Rack and Pinion Electric Slide with Manual Override and 3" x 3" Box Tube Slide-Out Ram</li> <li>21. 30" Entry Door</li> <li>22. Large Capacity Pass-Through Storage with Gas Assist Easy Lift Doors</li> <li>23. Residential Carpet</li> <li>24. Residential Style Carpet Pad</li> <li>25. Armstrong® Linoleum</li> <li>26. 5/8" Tongue and Groove Plywood Floor Decking</li> <li>27. 2" x 3" Aluminum Double Welded Floor Joists - 16" O.C.</li> <li>28. R-14 Fiberglass Batten Insulation</li> <li>29. Darco Moisture Barrier</li> <li>30. Strong Welded Frame Structure. 18" Total Height (10" "I" beam and 8" "box" beam)</li> <li>31. Easy Access Exterior Battery Compartment</li> <li>32. Fully Enclosed Underside</li> <li>33. Heavy-Duty 16" 8 Lug Wheels, 7,000# Axles with Easy Lube Hubs, Heavy-Duty Shock Absorbers</li> <li>34. Easy Access to the Furnace, Converter, Water Pump and other Mechanical Items</li> </ol> |
|---|--|

### FRESCO



### MILANO

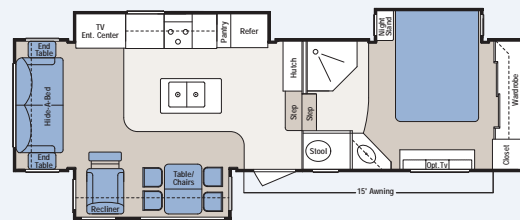


### SANDALWOOD

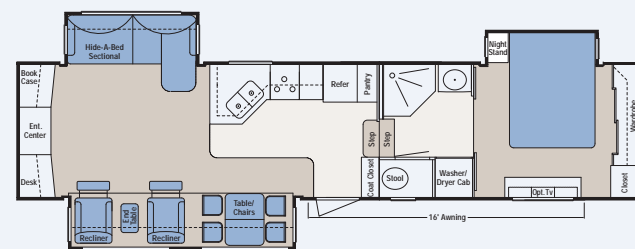


DÉCOR PACKAGES

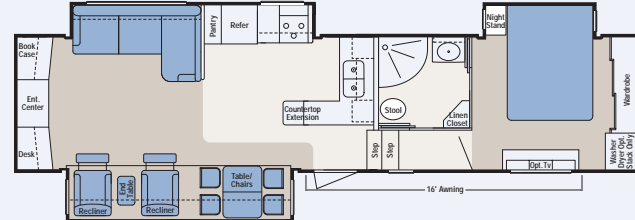




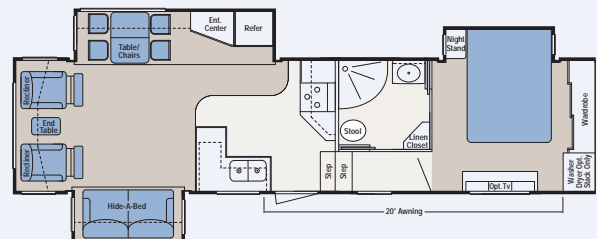
32IKM



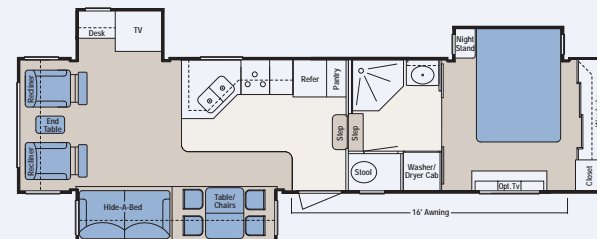
36REM



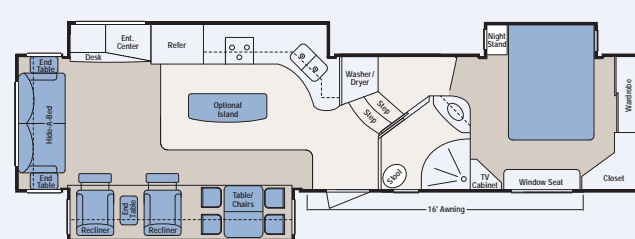
37CKM



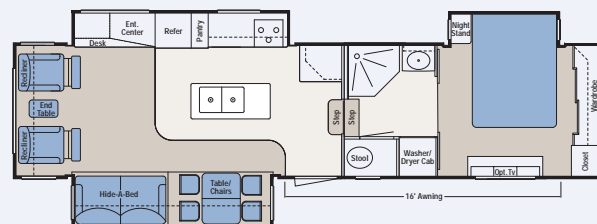
35SBM



36RLM



37KEM



36IKM

- LINOLEUM
- CARPET
- FURNITURE

### OPTIONS

- Island Kitchen (37KEM Only)
- Central Vacuum
- Exhaust Fan in Bath (Standard 35SBM, 37CKM & 37KEM)
- Fireplace
- 2nd 13.5 A/C in Bedroom
- Heat Pump Upgrade (Per Each Unit)
- 12 Cu. Ft. Side x Side Refrigerator (32IKM, 36REM, 36RLM, 36IKM, 37KEM & 37CKM)
- Ice maker (32IKM, 36REM, 36RLM, 36IKM, 37KEM & 37CKM)
- King Size Bed
- Convection Microwave
- 19" LCD TV in Bedroom
- Canadian Standards (Canadian Dealers Only)
- Plumb for Washer/Dryer
- Chassis Enhancement Package (Drum Brakes) Consists of Neverlube 7K Axles, Never Adjust Brakes, Electric Rear Stabilizer, and Independent Front Landing Gear
- Chassis Enhancement Package (Disc Brakes) Consists of 8K Axles, Dexter Disc Brakes, Never Lube Axles, 17.5" Aluminum Wheels and 17.5" Tires, Independent Front Landing Gear and Electric Rear Stabilizer
- Arctic Package - Consists of R-14 Sidewall Insulation, R-28 Total Floor Insulation and 42K Furnace
- Audio/Video Enhancement Package - Consists of 32" Sony® LCD TV and Sony® Dream Surround Sound System
- Basement Exterior Entertainment System - Consists of 19" LCD TV on an Adjustable Bracket and a Jensen® Sound System with DVD Player
- Generator Preparation (Now Includes Whole Coach Surge Protection)
- Dual Pane Windows
- Winegard® Satellite - Automatic
- Rear Accessory Receiver (Includes Bike Rack)
- Trail Air Hitch
- Slide Out Covers
- "G" Rated Tires
- MOR/Ryde® Suspension
- Exterior Paint Package
- Eclipse Power Awning with Wind Sensor
- Roll Out Tray
- 2nd Battery
- 40lb. LP Bottles
- Stackable or Combo Washer/Dryer (N/A 32IKM) (37CKM/35SBM Combo Only)
- 16 Gallon Water Heater
- RVIA (US Dealers Only)
- State Seal
- CRVDA (Canadian Dealers Only)
- Atwood® Leveling System



For your safety and satisfaction, 2009 Montego Bay® fifth wheels are weighed during our final inspection process. Beginning with run number 245-6, each coach will have federally mandated NCC (net carrying capacity) placard placed in the coach. The chart right reflects coaches as typically equipped. The options you select will affect the weight of the coach and your carrying capacity.

Model Names	32IKM	36REM	37CKM	37KEM
GVWR	15,250	16,000	16,250	16,250
Dry Hitch Weight	2,602	2,520	2,559	2,664
Dry Axle Weight	9,079	10,558	10,334	11,061
NCC (Net Carrying Capacity)	3,569	2,922	3,357	2,525
Interior Height LR/BR	93"/75"	93"/75"	93"/75"	93"/75"
Exterior Width	102"	102"	102"	102"
Exterior Length (w/out Ladder)	33'5"	38'7"	38'9"	39'9"
Exterior Height	153"	153"	153"	153"
Fresh Water Capacity (gal.)	55	55	55	55
Waste Water Capacity (gal.)	50	50	50	50
Grey Water Capacity (gal.)	50	50	50	50
LP Gas Capacity (lbs.)	60	60	60	60
Tire Size	ST235-80R16	ST235-80R16	ST235-80R16	LT235-80R16
Axle Rating	(2) 7,000	(2) 7,000	(2) 7,000	(2) 7,000

### STANDARD EQUIPMENT

#### Body and Frame Construction

- All Aluminum Double Welded Cage Construction
- Gel Coat High Gloss Fiberglass Sidewalls
- 7,000# Axles with Easy Lube Hubs
- Deep Tinted Windows with Safety Glass
- Deluxe Exterior Graphics
- 8 Lug HD Wheels
- Roof Ladder
- Extended Pin Box
- Fold Out Entry Grab Handle
- Manual Rear Stabilizer Jacks
- Electric Power Front Jacks
- Shock Absorbers
- Spare Tire with Hoist
- Tinted Skylight at Shower Area
- Fully Enclosed Underbelly
- Pass Through "Basement" Storage
- 1/2" Plywood Roof Decking
- Fiberglass Front and Rear Cap
- 5/8" Tongue and Groove Plywood Floor Decking
- 18" "Box" Beam/"I" Beam Stack Chassis
- Two 30lb. LP Bottles
- Traveler Power Exterior Awning
- HD Chrome Wheel Simulators

#### Interior Features

- Solid Hardwood Construction of Cabinets, Drawers and Doors
- All Cabinets Pre-Drilled and Screwed with Hidden European Style Hinges
- Dupont™ Corian® Countertops/Kitchen and Lavatory
- Stainless Under Mount Sink
- Night Shades
- Grab Handle at Entry Door
- Ball Bearing Full Extension Drawer Glides
- TV Slider/Swivel Shelf
- Bedding Package with Bedspread and Pillow Shams
- Brushed Nickel Cabinet Hardware
- Deluxe Window Valances and Lambrequins
- Designer Wall Clock in Select Floor Plans

#### Furniture

- Two "Metro" Incliners
- Pillow Top 80" Mattress
- Dining Table with Leaf
- Coffee Table/Ottoman (Select Floor Plans)
- Four High Back Chairs
- Residential Style Sofa by Williamsburg featuring "Air System" Mattress
- Designer Headboard

#### Appliances and Electronics

- 8 Cu. Ft. Refrigerator/Freezer with Acrylic Black Panel Insert
- 22" Broiler Oven with Three Burner Cook Top and Cover
- 26" Flat Screen LCD TV
- Microwave
- TV Antenna
- Pre-Wire for Satellite
- 30" Residential Over the Range Microwave

#### Electrical

- 50 Amp Service with Detachable Cord
- 65 Amp Power Converter
- 12 Volt Deep Cycle Battery
- Convenient Electric Command Center
- Fluorescent Lighting in Select Areas
- Two Exterior Security Lights
- Porch Light
- Deluxe Accent Light Package
- Independent Electric Slides
- Upgraded Wall Switches
- 120 Volt Exterior Receptacle
- Hitch Light
- 12 Volt Battery Disconnect

#### Heat/Ventilation/Air Conditioning

- 15,000 BTU Air Conditioner
- 35,000 BTU Furnace
- Preparation for Second Air Conditioner in Bedroom
- Shurflo Fan with Remote in Living Area
- Solid Wood Furnace Return Air Cover
- In Floor Ducted Heat System
- Ducted Supply and Return for Air Conditioning
- Residential Style Commode Room Exhaust Fan

#### Plumbing System

- Neo-Angle Fiberglass One Piece Shower with Brushed Nickel Shower Door
- Black Tank Flush System
- Ten Gallon Gas/Electric Water Heater
- Heated Grey, Black and Freshwater Tanks
- Exterior "Hook Up" Center with Cable, Water and Phone Connections Along with an Exterior Shower
- Winterization Package
- Brushed Nickel Style Kitchen Faucet
- Solid Surface Lavatory Sink
- Sewer Hose Storage
- Porcelain Commode



Large exterior storage compartment includes handy access door to the furnace and vacuum system. Shown with optional roll-out tray.



A sliding door provides handy access to the furnace, central vacuum and other mechanic items.



Sturdy 18" powder coated steel frame



3" slide rams with electric motor



5/8" plywood floor decking



One **less** thing  
to **worry** about.

Worry-free protection against unexpected repairs for new  
or pre-owned travel trailers, fifth wheels and toy haulers

Comprehensive coverage

Professional claims administration with  
over 25 years of experience

Protection throughout the United States and Canada

Special coverages

24-hour roadside assistance benefits

Trip interruption benefits

Service call benefits

Administered by:

United Service Protection Corp. • **United Service Protection Inc. (in FL only)**  
P.O. Box 20899, St. Petersburg, FL 33742-0899 • Toll-Free: 1-800-685-3034  
Florida License #60016000 • © Assurant, Inc. 2008

# MONTEGO BAY® PREMIUM FIFTH WHEELS

Montego Bay®



0985 N 900 W • Shipshewana, IN 46565  
E-Mail [kz@kz-rv.com](mailto:kz@kz-rv.com)

[www.kz-rv.com](http://www.kz-rv.com)

Due to continual research and advances, manufacturer reserves the right to change specifications, design, price and equipment without notice, and assumes no responsibility for any error in this literature. Some items shown are not included as standard or optional equipment. ©2009KZ

1/15/09 5M



Dealer:

[Blank area for dealer information]

Ask about our  
2/5 Warranty

