



# SPORTSMEN<sup>®</sup>



*Come  
home  
to KZ!*



[www.kz-rv.com](http://www.kz-rv.com) |



## Sportsmen

Available in both travel trailers and fifth wheels, Sportsmen models are a tremendous value in quality, price and innovative features.

**S301BH** The large slide-out provides lots of room in this living area which features a sofa with reversible cushions and convertible U-dinette, making it the perfect entertainment space for family and friends. The front bed is perfect for mom and dad, while the kids will enjoy their own rear bunk area.



**S301BH**  
Sedona Décor with Legacy Cherry





Shown with the optional deluxe sleeper sofa.

Kitchens come equipped with a beautiful, residential backsplash to add that high-end look women love. The countertops are spacious and the sinks are deep enough for large pots and pans. Camping made easy!

**S235RK** Storage is maximized with overhead cabinets, pantry, closets and under-dinette doors.

Large slide-out features jiffy sofa and refrigerator.



**S235RK**  
Dune Décor with  
Legacy Cherry



**S245BH** Kitchens feature all the comforts of home including glazed Legacy Cherry cabinets, microwave, refrigerator and acrylic sink with cover.

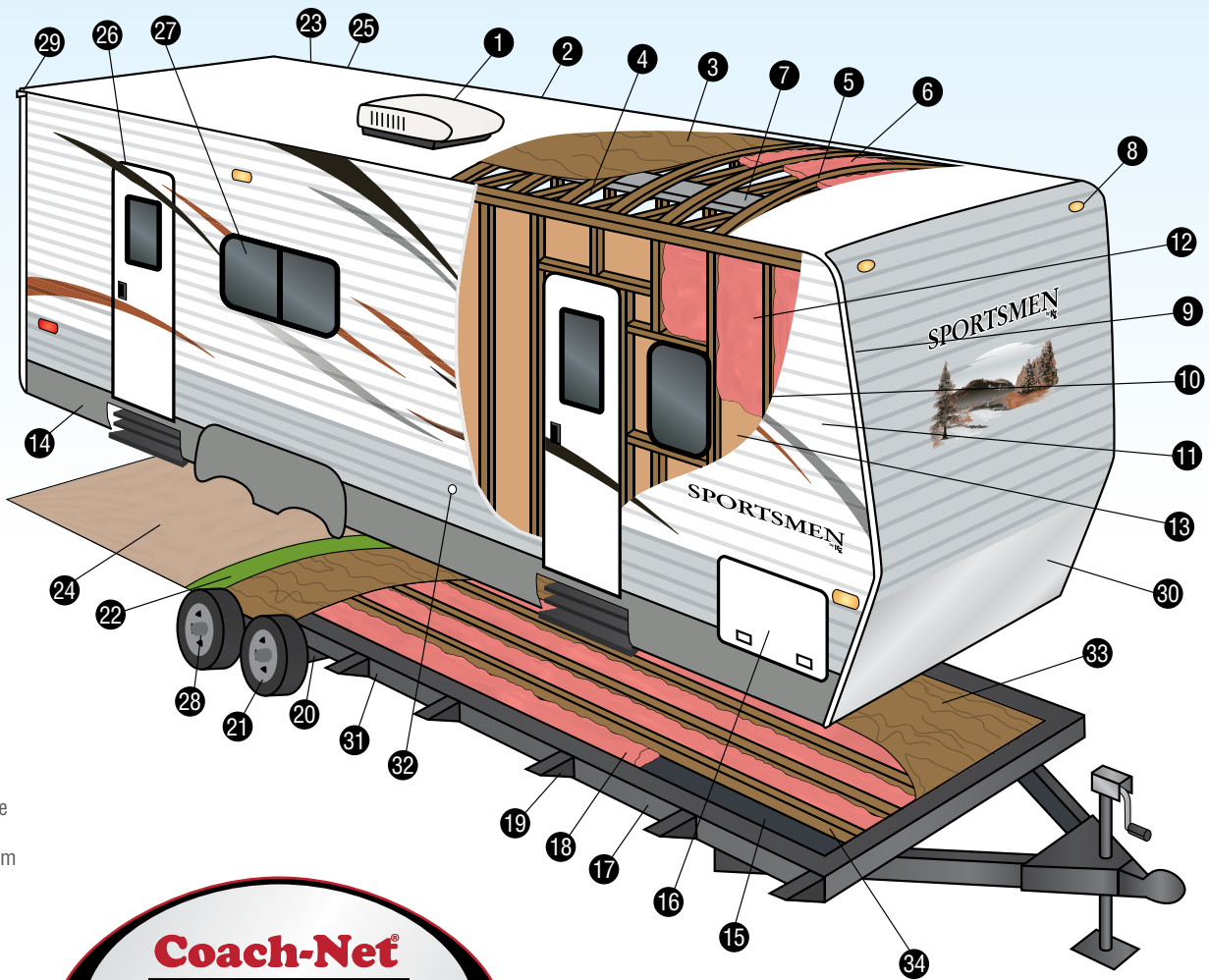


**S245BH**  
Dune Décor with Legacy Cherry



**S245BH** The large rear bike storage door allows bulky items to travel under the bunks and out of the way. The bottom bunk flips up for added storage space.

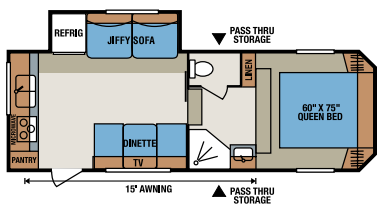
- 1 13,500 BTU A/C
- 2 Seamless 1-Piece Roofing Material
- 3 3/8" Decking
- 4 Vinyl Interior Ceiling Panel
- 5 4 1/2" Wood Truss Rafters, 16" O.C.
- 6 R-7 Batten Insulation
- 7 Insulated Ductwork
- 8 Exterior Clearance Lights
- 9 2x2 Wood Frame Front and End Walls
- 10 2x2 Wood Studs, 16" O.C.
- 11 Extra-Thick .024 Metal Siding
- 12 R-7 Batten Insulation
- 13 Decorative Luan Wall Board
- 14 Exterior Brake Lights
- 15 Darco® Moisture Barrier Underbelly
- 16 Extra-Large Radius Exterior Baggage Doors
- 17 Heavy Duty I-beam Frame Construction
- 18 R-7 Batten Insulation
- 19 Fully Welded Out Riggers
- 20 Heavy Duty Leaf Spring Axles
- 21 Heavy Duty Steel Wheels
- 22 Residential Style Carpet Pad
- 23 Rack and Pinion Electric Slide with Manual Override
- 24 Residential Carpet or Linoleum
- 25 Triple Sealed Slide Outs
- 26 Radius Entrance Door
- 27 Tinted Windows
- 28 Easy-Lube Axles
- 29 Extra Long Drip Spouts
- 30 Diamond Plate Front Plate
- 31 Heated Fresh Water Tank
- 32 Cable Hook Up
- 33 Plywood Floors
- 34 Floor Joists, 16" O.C.



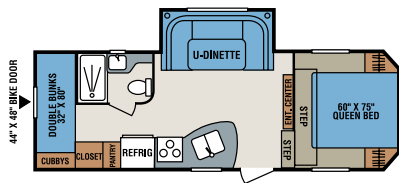
**Coach-Net®**  
 RV Membership Plans  
*One Year FREE  
 Road Side Assistance  
 courtesy of KZ!*

Dexter **NEV-R-ADJUST™** Brakes

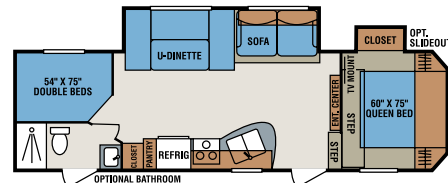
## Fifth Wheels



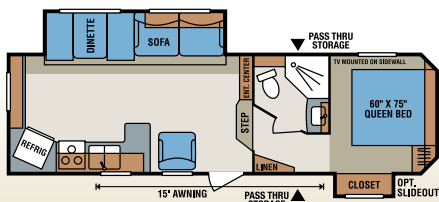
S235RK



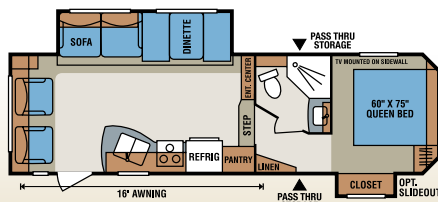
S245BH



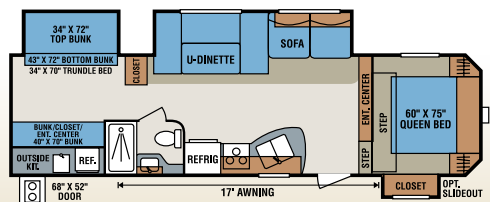
S265BH



S265RK

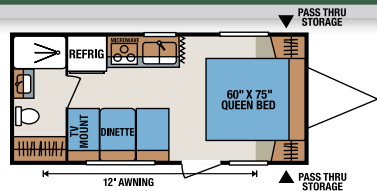


S265RL

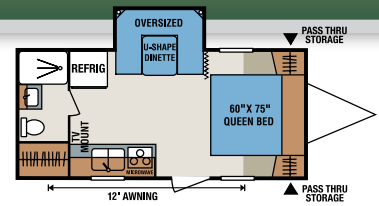


S315BHK

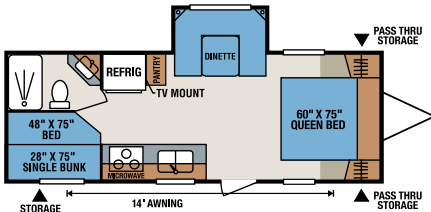
# Travel Trailers



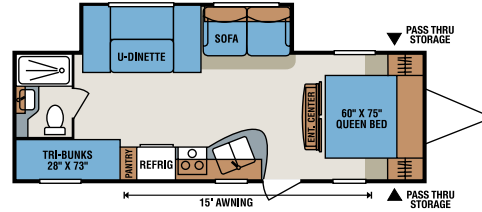
**S202RB**



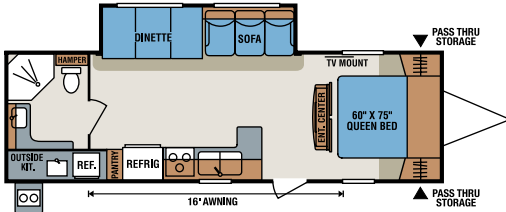
**S202SRB**



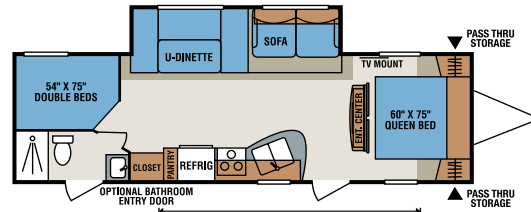
**S242SBH**



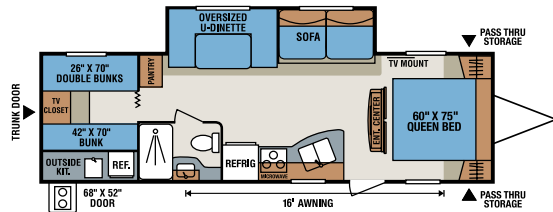
**S260BH**



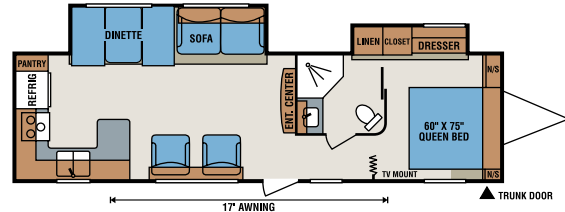
**S290RBK**



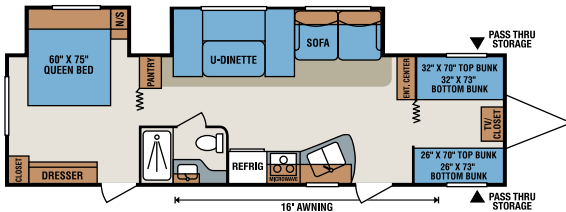
**S301BH**



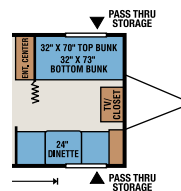
**S314BHK**



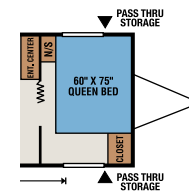
**S321RKS**



**S330BH**



**S330BH**  
Bunk/Dinette Option

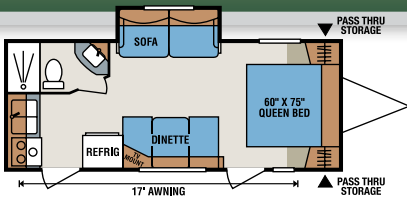


**S330BH**  
Bunk/Dinette Option

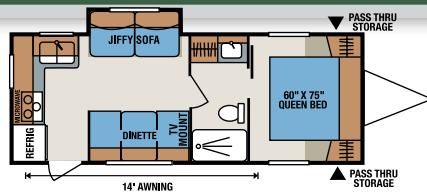
## TRAVEL TRAILERS

	S202RB	S202SRB	S2303S	S241RKS	S242BH	S242SBH	S260BH	S262RK	S272BH	S280RL	S290RBK
UVW (Unloaded Vehicle Wt.)*	3,711	4,070	4,520	4,575	4,323	4,628	5,590	5,470	4,736	5,878	6,150
Dry Hitch Weight*	456	491	450	502	505	579	520	580	570	683	656
Dry Axle Weight*	3,255	3,579	4,070	4,073	3,818	4,049	5,070	4,890	4,166	5,195	5,494
NCC (Net Carrying Capacity)	1,789	1,430	1,480	1,425	1,677	1,372	1,410	1,530	2,264	1,122	850
GVWR	5,500	5,500	6,000	6,000	6,000	6,000	7,000	7,000	7,000	7,000	7,000
Interior Height	78"	78"	78"	78"	78"	78"	82"	82"	78"	82"	82"
Exterior Height w/AC	10' 1"	10' 1"	10' 2"	10' 1"	10' 1"	10' 1"	11' 2"	11' 2"	10' 1"	11' 1"	11' 1"
Exterior Width	96"	96"	96"	96"	96"	96"	96"	96"	96"	96"	96"
Exterior Length	21' 11"	22' 5"	24' 11"	26'	26' 6"	26' 9"	29' 3"	28' 5"	29' 11"	30'	31'
Refrigerator (cu. feet)	5	5	5	5	5	5	5	5	5	5	5
Water Htr. Cap. (gal. G/E w/DSI)	6	6	6	6	6	6	6	6	6	6	6
Fresh Water Cap. (gal.)	38	38	38	38	38	38	40	40	38	38	38
Waste Water Cap. (gal.)	32	32	32	32	32	32	32	32	32	32	32
Gray Water Cap. (gal.)	32	32	32	32	32	32	32	64	32	32	32
LP Gas Cap. (lbs.)	40	40	40	40	40	40	40	40	40	40	40
Furnace BTUs (1,000s)	16	16	20	20	20	20	25	25	20	25	25
Tire Size	14"	14"	14"	14"	14"	14"	14"	14"	14"	14"	14"
Awning	12'	12'	17'	14'	14'	14'	15'	16'	15'	15'	16'

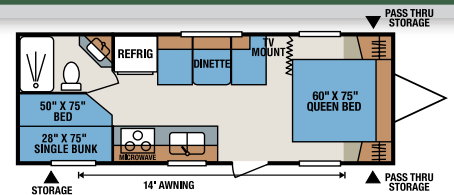
\*This weight reflects the rolling average unit weight for each model. Your trailer weight will vary according to optional equipment.



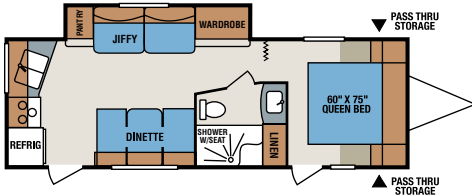
S2303S



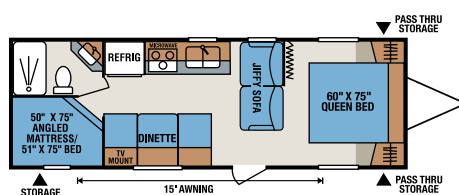
S241RKS



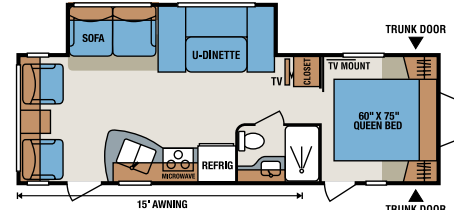
S242BH



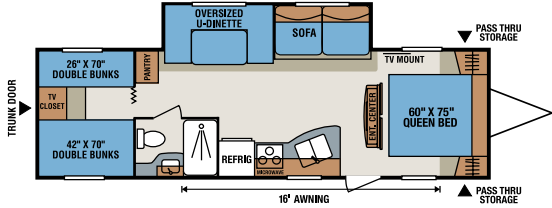
S262RK



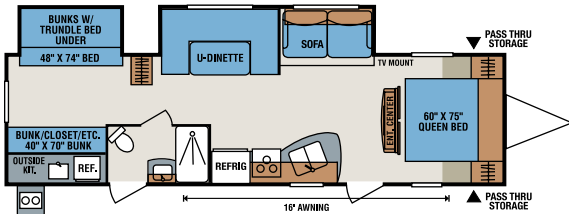
S272BH



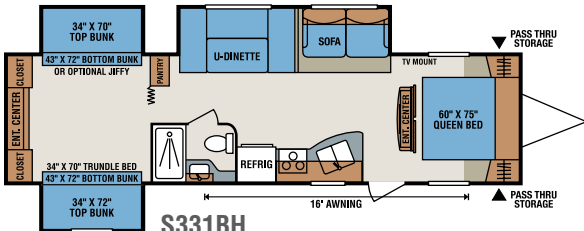
S280RL



S314BH



S322BHK



S331BH

**VALUE  
PACKED**

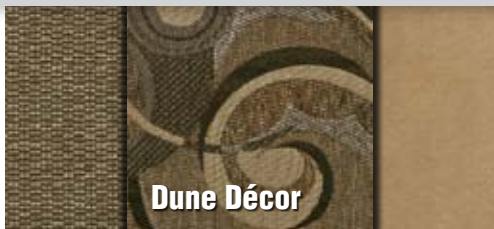
Enjoy the true  
*value and quality*  
of Sportsmen®...



and create the most  
**valuable moments** of all.

**FIFTH WHEELS**

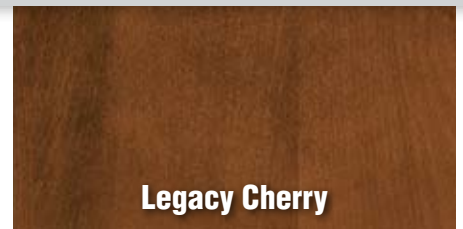
S301BH	S314BH	S314BHK	S321RKS	S322BHK	S330BH	S331BH	S235RK	S245BH	S265BH	S265RK	S265RL	S315BHK
6,280	6,222	6,510	6,730	7,060	7,115	7,550	5,925	6,110	7,130	7,230	7,370	7,830
760	684	589	780	600	773	760	860	1,210	1,440	1,310	1,450	1,420
5,520	5,538	5,921	5,950	6,460	6,342	6,790	5,065	4,900	5,690	5,920	5,920	6,410
1,720	1,778	1,490	2,070	1,740	1,685	1,250	1,075	1,490	1,670	1,570	1,430	970
8,000	8,000	8,000	8,800	8,800	8,800	8,800	7,000	7,600	8,800	8,800	8,800	8,800
82"	82"	82"	82"	82"	82"	82"	90"	90"	92"	91"	91"	91"
11' 4"	11' 1"	11' 1"	11' 4"	11' 2"	11' 1"	11' 4"	11' 8"	12' 1"	12' 4"	12' 3"	12' 3"	11' 11"
96"	96"	96"	96"	96"	96"	96"	96"	96"	96"	96"	96"	96"
32' 6"	33'	33'	34' 3"	34' 5"	35' 2"	35' 6"	25' 3"	26' 9"	30'	30' 6"	30' 6"	33' 1"
5	5	5	5	5	5	5	5	5	5	5	5	5
6	6	6	6	6	6	6	6	6	6	6	6	6
38	38	38	40	40	38	38	38	38	40	38	38	38
32	32	32	32	32	32	32	57	32	32	57	57	32
32	32	32	32	32	32	32	89	32	32	89	57	32
40	40	40	40	40	40	40	40	40	40	40	40	40
30	30	30	30	30	30	30	25	25	25	25	25	30
15"	15"	15"	15"	14"	15"	15"	14"	15"	15"	15"	15"	15"
16'	16'	16'	17'	16'	18'	16'	15'	16'	14'	15'	16'	17'



**Dune Décor**



**Sedona Décor**



**Legacy Cherry**

**Standards**

- Awning with Drip Rail and Spouts
- Microwave with Turntable
- AM/FM CD Player
- 13,500 BTU A/C
- 6 Gallon Gas DSI Water Heater
- Bedsread
- Padded Headboard
- Monitor Panel
- Power Vent in Bath
- Tinted Safety Glass Windows
- 5 Cubic Foot Refrigerator
- TV Antenna with Booster
- Acrylic Sink
- Solid Wood Framed Mortise and Tenon Glazed Cabinet Doors
- 20 lb. Gas Bottles
- Patio Door Light
- Large Overhead Cabinets
- Built-In Medicine Cabinet with Mirror in Bath
- Range Hood with 12V Light and Exhaust Fan
- 30 Amp Service
- 3 Burner Cook Top
- 1 Piece Seamless Roof
- Rear Bumper with Sewer Hose Storage

- Cable Hook Up
- Radius Entry Door
- Mini Blinds
- Innerspring Mattress
- Roller Ball Bearing Drawer Guides
- Border Accent Tape
- Sink Cover
- Heated Fresh Water Tank
- Roof Vent in Main Bedroom
- Enclosed Pin Box (FW)
- Smooth Screwless Baggage Doors
- Decorative Pillows on Jiffy Sofa (Where Available)
- Tub Surround
- Decorative Light Above Dinette in Slide-Out
- Dexter **NEV-R-ADJUST™** Brakes
- Reversible Jiffy Pillow Back Sofa
- Decorative Kitchen Backsplash
- \*Satellite Preparation
- \*Winter By-Pass Kit
- \* As of 1/8/13 Production Date

**Standard Run Package**

- 6 Cubic Foot Refrigerator
- Spare Tire/Carrier/Cover
- Oven
- 2/4 Stabilizer Jacks

- 30# Gas Bottle with Cover
- Assist Grab Handle
- Skylight Over Tub
- 2 Exterior Speakers
- Outside Shower (N/A with Outside Kitchen Models)
- Gas/Electric DSI Water Heater

**S330BH Front Bedroom Options**

- (Four Bunks Standard)
- Bunk/Dinette
- Queen Bed

**Options**

- 15,000 BTU A/C Upgrade
- 2/4 Stabilizer Jacks
- 30# Gas Bottles
- 6 Cubic Foot Refrigerator
- Closet Slide (S265BH, S265RK, S265RL, and S315BHK)
- Fiberglass Sidewalls on Fifth Wheels (Forced)
- Deluxe Sleeper Sofa
- Assist Grab Handle
- Black Tank Flush
- Bottle Cover

- Bunk Ladder & Railing (Where Available)
- Fan-Tastic Vent®
- Ducted A/C (Forced on S241RKS) (Available on S202, S2303S, S242, S272, and Standard on All Other Models)
- Jiffy in Bunk Slide (S331BH ODS Only)
- Gas/Electric DSI Water Heater
- Ladder
- Power Tongue Jack
- 19"/26" LCD TV
- Outside Grill (N/A with Outside Kitchen)
- Outside Shower (N/A with Outside Kitchen)
- Outside Speakers
- Oven
- Power Awning
- Recliner – 1 or 2
- Skylight Over Tub
- Spare Tire/Carrier/Cover
- Stereo with DVD Player
- Table and Chairs with Leaf
- Bike Rack/Cargo Carrier
- Katching ZZs Mattress Upgrade
- Windows at End of Slide Outs (Select Models)
- Night Shades
- Wired for 2nd A/C - 50 Amp Service
- Entry Door in Bath (S265BH and S301BH Only)



The optional Bike Rack/Cargo Carrier offers you even greater versatility for those "extra" items you don't want to leave at home.



Optional Outside Speakers



Optional Bottle Cover



Optional Power Tongue Jack



**Dealer Satisfaction Index:** Ratings of manufacturers, by dealers, have consistently awarded KZ top honors for excellence of design, reliability, overall quality and value, communications and dealer support.




Dealer: \_\_\_\_\_



Join our Family Forum at [www.kzfamilyforum.com](http://www.kzfamilyforum.com)

**ASK ABOUT OUR 2-YEAR LIMITED WARRANTY!**

 Portions of this brochure were used with the expressed authority of Dexter Axle, but Dexter Axle is not responsible for the accuracy of the information contained herein.

For more product details and in-depth information, visit us at [www.kz-rv.com](http://www.kz-rv.com) |   

0985 N 900 W • Shipshewana, IN 46565  
E-mail [kz@kz-rv.com](mailto:kz@kz-rv.com) • [www.kz-rv.com](http://www.kz-rv.com)



Due to continual research and advances, manufacturer reserves the right to change specifications, design, price and equipment without notice, and assumes no responsibility for any error in this literature. Some items shown are not included as standard or optional equipment. ©2013KZ | 2/14/13 | 25M