

SPORTSMEN[®]

TRAVEL TRAILERS & FIFTH WHEELS



SPORTSMEN TRAVEL TRAILERS are engineered and build to exceed your expectations. Backed by KZ's 2-year warranty, we stand behind our products. From the Equa-Flex suspension to the Superflex roof membrane with its 12-year warranty, and everything in between, Sportsmen offers a floorplan that is right for you.

The floor is constructed with 5/8" tongue and groove plywood and beautifully covered with Congoleum linoleum with 3 year cold crack warranty. The living area is spacious and loaded with quality furnishings and components. Seamless countertops, undermount kitchen sink with covers, 8 cubic foot refrigerator, multimedia stereo with DVD, Bluetooth and NFC wireless connectivity, and much more.

S323BHK | Linen décor



S323BHK | Linen décor

The queen-sized bed is surrounded by overhead cabinets, two hanging wardrobes, LED lighting and spacious under bed storage.



S323BHK | Linen décor

Perfect for family and friends! The dinette table converts to a comfortable bed with an additional overhead flip-down bed.



Storage is amazing. The S323BHK features a hanging wardrobe, plenty of shelved cabinets and a large rear window with plenty of counter space below. If the weather doesn't cooperate, no problem. Enjoy the indoors for awhile!

SPORTSMEN FIFTH WHEELS

Everything you expect and more! Built with K-Z's 2-year warranty. Super-sized panoramic slideroom windows surround the plush interiors. Built on 5/8-inch tongue and groove plywood, the floor is covered with Congoleum® linoleum, with a 3-year cold crack warranty.

344BH | French Roast décor

Optional dinette with four chairs, seamless countertops, blue LED accent lighting in the main living area. Multimedia stereo with DVD, Bluetooth and NFC wireless connectivity are just a few of the many interior standards and options to choose from.



344BH | French Roast décor

A beautifully designed kitchen to cook in and enjoy. 8 cubic foot refrigerator with temperature control, plenty of counter space for all your appliances, food prep and décor. Kitchen island with attractive wood design and overhead skylight.



344BH | French Roast décor



A queen-sized bed and elegant wardrobe slideout are standard in most Sportsmen fifth wheels.

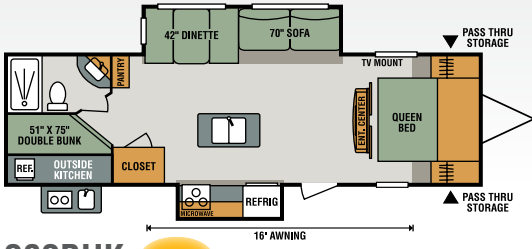


Additional hanging wardrobe space with shelved cabinet storage.

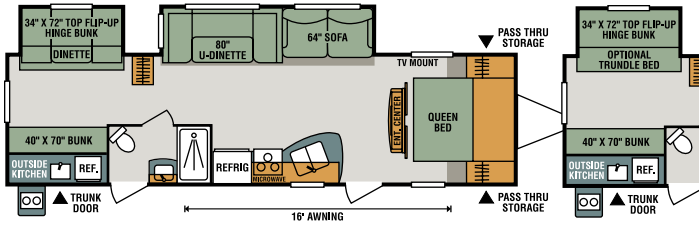


Pass-through bathroom with entry from the master bedroom, as well as main living area access.

TRAVEL TRAILERS

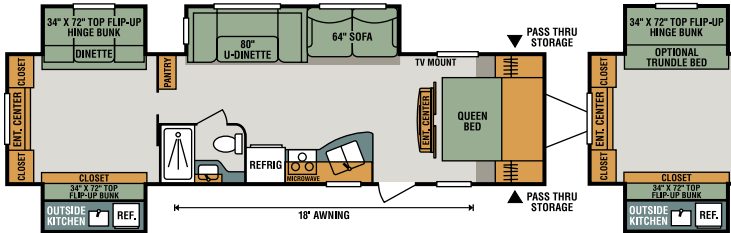


282BHK **NEW**



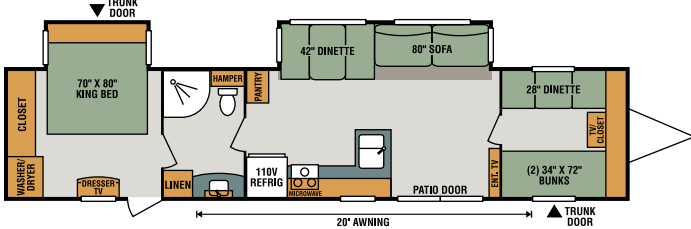
312BHK

312BHK
Trundle Bed Option

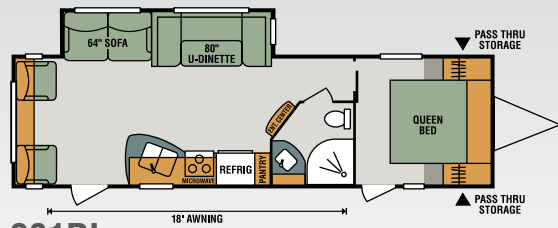


323BHK

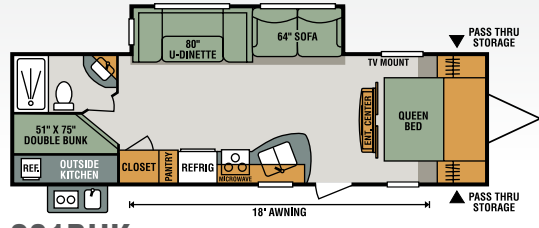
323BHK
Trundle Bed Option



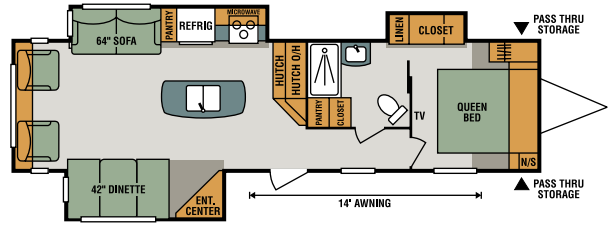
362BH



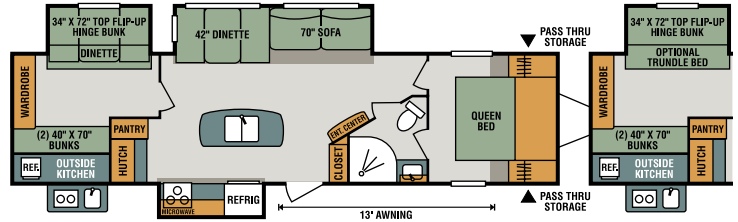
281RL



291BHK

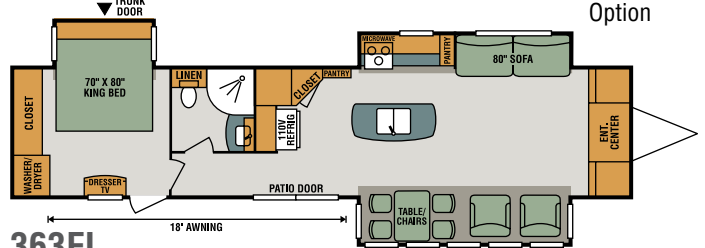


322IK



333BHK **NEW**

333BHK
Trundle Bed Option

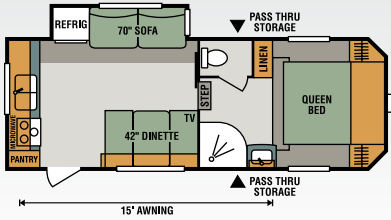


363FL

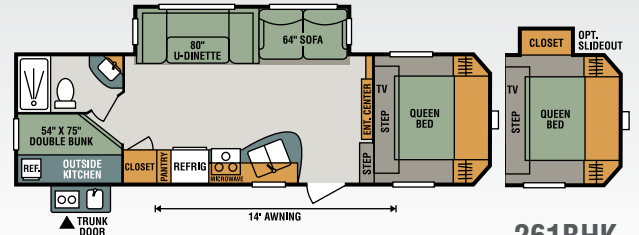
Travel Trailers	281RL	282BHK	291BHK	312BHK	322IK	323BHK	333BHK	362BH	363FL
UVW (Unloaded Vehicle Weight)*	6,260	6,080	6,280	7,060	7,690	7,680	8,520	8,150	8,910
Dry Hitch Weight*	790	840	760	600	890	700	950	1,150	1,460
Dry Axle Weight*	5,470	5,240	5,520	6,460	6,800	6,980	7,570	7,000	7,450
NCC (Net Carrying Capacity)	1,740	2,720	1,720	1,740	1,110	1,120	980	2,310	1,550
GVWR	8,000	8,000	8,000	8,800	8,800	8,800	9,995	10,460	10,460
Interior Height	82"	78"	82"	82"	82"	82"	82"	82"	82"
Exterior Height w/ A/C	11' 3"	10' 11"	11' 4"	11' 2"	10' 11"	11' 4"	TBD	11' 4"	11' 4"
Exterior Width	96"	96"	96"	96"	96"	96"	96"	96"	96"
Exterior Length	32' 1"	32' 8"	32' 3"	34' 4"	35' 4"	35' 11"	36' 8"	40' 9"	40' 9"
Refrigerator (cu. feet)	8	8	8	8	8	8	8	18	18
Water Heater Cap. (gal. G/E w/DSI)	6	6	6	6	6	6	6	6	6
Fresh Water Cap. (gal.)	38	40	38	38	38	38	38	38	38
Waste Water Cap. (gal.)	32	32	32	32	32	32	32	32	32
Gray Water Cap. (gal.)	32	32	32	32	32	32	64	64	64
LP Gas Cap. (lbs.)	60	40	60	60	60	60	60	60	60
Furnace BTUs (1,000s)	20	25	30	30	30	30	30	30	30
Tire Size	15"	15"	15"	15"	15"	15"	15"	15"	15"
Awning	18'	16'	18'	16'	14'	18'	13'	20'	18'

*This weight reflects the rolling average unit weight for each model. Your trailer weight will vary according to optional equipment.

FIFTH WHEELS

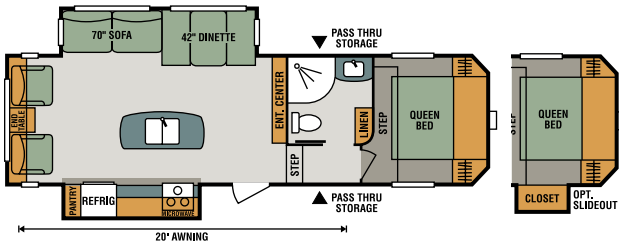


231RK



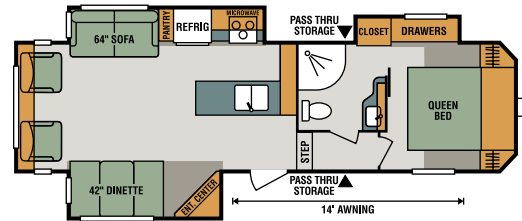
261BHK

261BHK
Closet Option

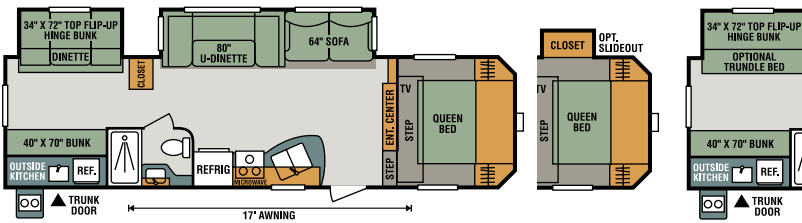


282IK

282IK
Closet Option

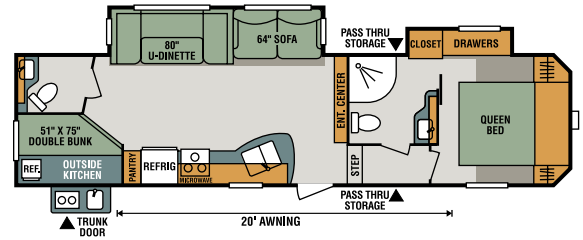


293RL

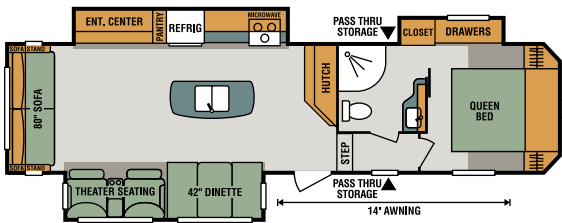


301BHK

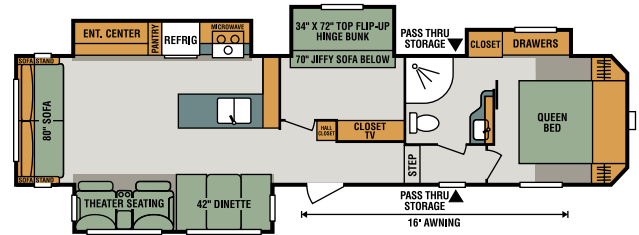
301BHK
Closet Option
301BHK
Trundle Bed Option



322BHK



333IK



344BH **NEW**

Fifth Wheels	231RK	261BHK	282IK	293RL	301BHK	322BHK	333IK	344BH
UVW (Unloaded Vehicle Weight)*	5,925	7,130	7,540	7,860	7,830	8,270	8,510	10,030
Dry Hitch Weight*	860	1,440	1,210	1,620	1,420	1,770	1,490	1,800
Dry Axle Weight*	5,065	5,690	6,330	6,240	6,410	6,500	7,020	8,230
NCC (Net Carrying Capacity)	1,075	1,670	1,260	1,340	1,370	1,730	1,890	1,970
GVWR	7,000	8,800	8,800	9,200	9,200	10,000	10,400	11,995
Interior Height	92"	92"	92"	92"	92"	92"	92"	84" - 95"
Exterior Height w/ A/C	11' 8"	12' 4"	12' 7"	12' 5"	11' 11"	12' 5"	12' 5"	12' 7"
Exterior Width	96"	96"	96"	96"	96"	96"	96"	96"
Exterior Length	25' 4"	31'	31' 6"	32' 9"	33' 1"	35' 9"	35' 9"	39' 7"
Refrigerator (cu. feet)	8	8	8	8	8	8	8	8
Water Heater Cap. (gal. G/E w/DSI)	6	6	6	6	6	6	6	6
Fresh Water Cap. (gal.)	38	38	38	38	38	38	38	38
Waste Water Cap. (gal.)	57	32	57	57	32	89	57	57
Gray Water Cap. (gal.)	89	32	57	57	32	57	57	89
LP Gas Cap. (lbs.)	60	60	60	60	60	60	60	60
Furnace BTUs (1,000s)	25	25	30	30	30	30	30	30
Tire Size	15"	15"	15"	16"	15"	15"	15"	16"
Awning	15'	14'	20'	14'	17'	20'	14'	16'

*This weight reflects the rolling average unit weight for each model. Your trailer weight will vary according to optional equipment.

Standards

- New Aerodynamic Front Profile
- Diamond Plate Rock Guard on Front of Travel Trailers
- Enclosed Pin Box on FW's
- 3/8" Fully Walk-On Roof Decking
- 1-Piece Seamless Roof w/SuperFlex® Roofing Material
- Awning w/Drip Rail & Spouts
- Tinted Windows
- Super-Sized Panoramic Slideroom Window
- Radius Entry Door
- Smooth Screwless Baggage Doors
- LED Pass-Through Storage Light
- Cable Hookup
- Digital TV Antenna w/Booster
- Self-Adjusting Electric Brakes
- Radial Tires
- Rear Bumper w/Sewer Hose Storage
- Winter Bypass Kit
- 2 or 4 Stabilizer Jacks (model specific)
- Outside Shower (N/A w/outside kitchen)
- (2) 30# Gas Bottles w/Bottle Cover
- 30 AMP Service
- 13,500 BTU A/C
- 3-Burner Cooktop
- Range Hood w/12V Light & Exhaust Fan
- Microwave w/Turntable
- Oven
- LP/Electric Double-Door Refrigerator
- Acrylic Sink w/High-Rise Faucet
- Solid Wood-Framed Mortise & Tenon Glazed Cabinet Doors
- Roller Ball Bearing Drawer Guides
- Decorative Light above Slideout Dinette
- Large Overhead Cabinets
- LED Interior Lighting
- Residential Crack-Resistant Congoleum® Linoleum Throughout
- Monitor Panel
- Built-In Medicine Cabinet w/Mirror in Bath
- Tub Surround
- Power Vent in Bath
- Skylight over Shower
- Queen Mattress
- Reversible Quilted Comforter
- Flush-Floor Bedroom (FW)
- Main Bedroom Roof Vent

K-Z Advantage Package

(mandatory option)

- 2-Tone EXT Side Metal
- Nitrogen-Filled Tires
- Power Awning w/LED Light Strip
- 5/8" Tongue-&-Groove Plywood
- Key-Alike Program for Baggage & Entry Doors
- Bed Storage System
- Black Tank Flush
- 6-GAL LP/Electric DSI Water Heater
- Friction Hinge Entry Door
- Power Front Jack w/LED Light
- Large Folding Grab Handle
- Spare Tire
- Exterior Speakers
- Amber Step Light
- Solar Prep
- Backup Camera Prep
- Flip-Down 71" Storage Rack (N/A 362BH, 363FL)
- Alumi-Tread® Entry Steps
- Equa-Flex® Suspension
- Battery Disconnect
- ToyLok®
- Climate Package including Insulated/Heated/Enclosed Underbelly
- Push-Back Recliners (STD in lieu of barrel chairs)
- Seamless Countertops w/Under-Mount Kitchen Sink & Sink Covers
- Dinette Doors w/36" Pullout Storage Bins
- Upper Bunk Windows (select models)
- Drop-In Cooktop w/Glass Cover
- 8 CU FT Refrigerator w/Temp Controls
- Kitchen Skylight
- (2) LED Motion Sensor Lights
- Blue LED Light Strip above Slideout Room (main LR only)
- 12V Dual USB Port
- Jackknife Sofa w/Middle Console & Sofa Arms
- (2) 6.5" Interior Speakers
- Multi-Media Stereo w/DVD, Bluetooth & NFC Wireless Connectivity
- Foot-Flush Toilet
- Pleated Shades
- Queen Pillowtop Mattress
- Plywood Bed Base w/Gas Struts

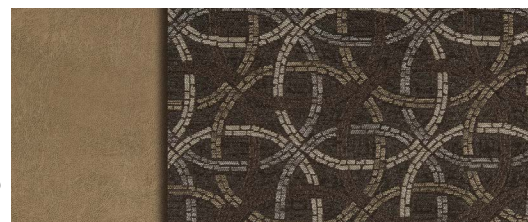
Options

- Color-Infused Ivory Exterior Fiberglass (N/A 362BH, 363FL)
- 15,000 BTU A/C IPO 13,500 BTU A/C
- 2nd A/C (13,500 BTU)
- 50 AMP Service w/2nd A/C Prep
- 39" LED TV (N/A on 231RK)
- 32" LED TV (231RK only)
- Bedroom LED TV w/Inside/Outside Bracket
- Radiant Technology PKG (foil in floor, roof, front, rear)
- Freestanding Dinette Table & 4 Chairs IPO dinette (mandatory on 363FL)
- Tri-Fold Hide-a-Bed Sofa IPO Jackknife (mandatory on 362BH, 363FL, 333IK)
- Theater Seating IPO Jackknife (333BHK, mandatory on 333IK, 344BH)
- Plumbed for Washer/Dryer w/50 AMP (STD on 362BH, 363FL)
- Wardrobe Slide (261BH, 282IK, 301BHK)
- Front & Rear Electric Stabilizer Jacks (TT's only)
- Electric Rear Stabilizer Jacks (FW only)
- Fireplace (N/A 281RL, 231RK, 282IK, 322BHK)
- 16" Tires & Aluminum Wheels (FW's only)
- Central Vac (FW's only)
- MaxxAir® Vent Fan in Living Room OR Bath
- Bunk Slide Trundle Bed IPO Dinette (312BHK, 323BHK, 333BHK, 301BHK)
- Wireless Backup Camera System
- Bumper-Mount Grill
- Roof Ladder

French Roast



Linen



RVIA



985 N 900 W • Shipshewana, IN 46565
E-mail kz@kz-rv.com • www.kz-rv.com

Due to continual research and advances, manufacturer reserves the right to change specifications, design, price and equipment without notice, and assumes no responsibility for any error in this literature. Some items shown are not included as standard or optional equipment. ©2016KZ | 2/16/17 | 25M