



DURANGO HALF-TON

LIGHTWEIGHT LUXURY FIFTH WHEELS



KEY FEATURES:

- All floorplans under 12,000 pounds
- Washer/dryer prep in bedroom
- Industry-first half-ton price point
- Optional 18 CU FT Residential Refrigerator
- Lithium battery ready
- Modern farmhouse cabinetry



The KZ **TRUE 2 WARRANTY** is a 2-year hitch-to-bumper limited warranty that's true to its name. The gold standard in RV protection, True 2 provides double the coverage of the industry norm. Plus, our warranty is backed by the craftsmanship and quality we're known for, so you can Go. Camp. Live. Wherever your adventure takes you, know that you're covered in your KZ.



2022 DURANGO HALF-TON FIFTH WHEELS

D290RLT | Barista décor



2022 DÉCOR



BARISTA



COBBLESTONE

Fifth Wheels	D230RKD	D250RED	D256RKT	D274BHD	D283RLT	D286BHD	D290RLT	D291BHT
UVW (Unloaded Vehicle Weight)*	7,110	7,570	8,660	9,170	8,660	8,550	8,980	9,740
Dry Hitch Weight*	1,090	1,500	1,390	1,890	1,500	1,540	1,420	1,550
Dry Axle Weight*	6,020	6,070	7,470	7,280	7,160	7,010	7,660	8,190
CCC (Cargo Carrying Capacity)	1,890	1,430	1,640	1,330	1,840	1,950	1,420	2,010
GVWR	9,000	9,000	10,500	10,500	10,500	10,500	10,500	11,750
Exterior Height w/ A/C	12' 1"	12' 1"	12' 1"	12' 1"	12' 1"	12' 1"	12' 1"	12' 1"
Exterior Width	96"	96"	96"	96"	96"	96"	96"	96"
Exterior Length**	26' 9"	29' 1"	33' 9"	36'	32' 11"	33' 7"	34' 5"	37' 5"
Refrigerator (cu. feet)	8	8	8	8	8	8	8	8
Water Heater Cap. (gal. G/E w/DSI)	6	6	6	6	6	6	6	6
Fresh Water Cap. (gal.) [Including Water Heater Capacity]	55	55	55	55	55	55	55	55
Waste Water Cap. (gal.)	50	50	50	50	50	50	50	50
Gray Water Cap. (gal.)	50	90	90	50	50	90	50	50
1/2 Bath Cap. (gal.)	N/A	N/A	N/A	40	N/A	N/A	N/A	50
LP Gas Cap. (lbs.)	60	60	60	60	60	60	60	60
Furnace BTUs (1,000s)	35	35	35	35	35	35	35	35
Tire Size	16"	16"	16"	16"	16"	16"	16"	16"
Awning	18'	20'	14'	15'/16'	13'/10' 6" opt.	(2) 14'	19'	13'/11' opt.

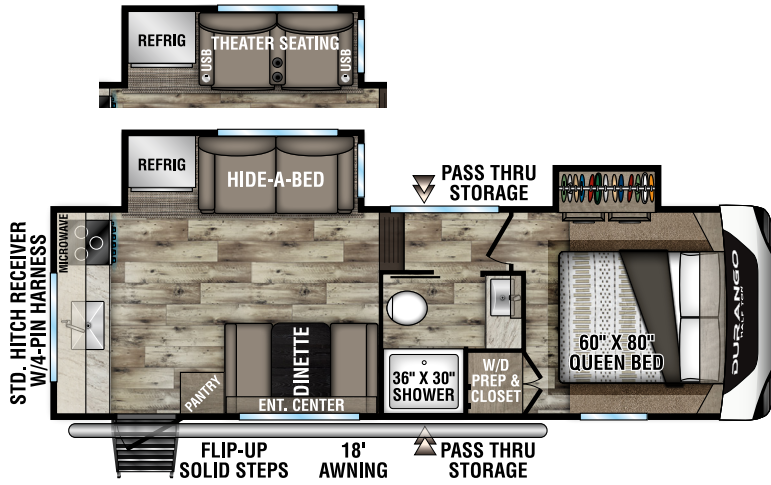
*This weight reflects the rolling average unit weight for each model. Your trailer weight will vary according to optional equipment.

**Exterior length is measured from rear of bumper to center of coupler.

2022 DURANGO HALF-TON FIFTH WHEELS

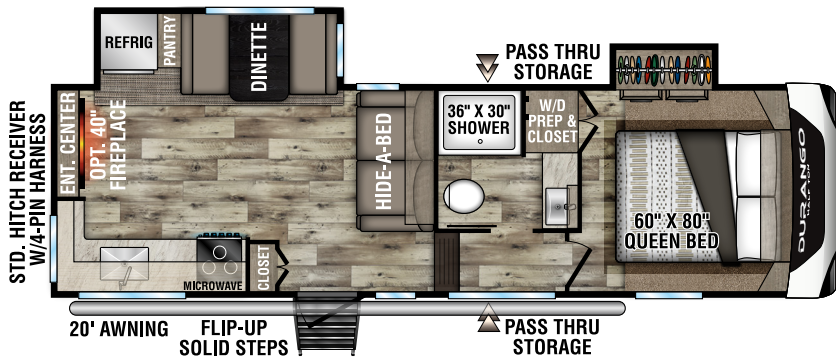
D230RKD

UVW - 7,110
 Exterior Length - 26' 9"
 Sleeps - 6



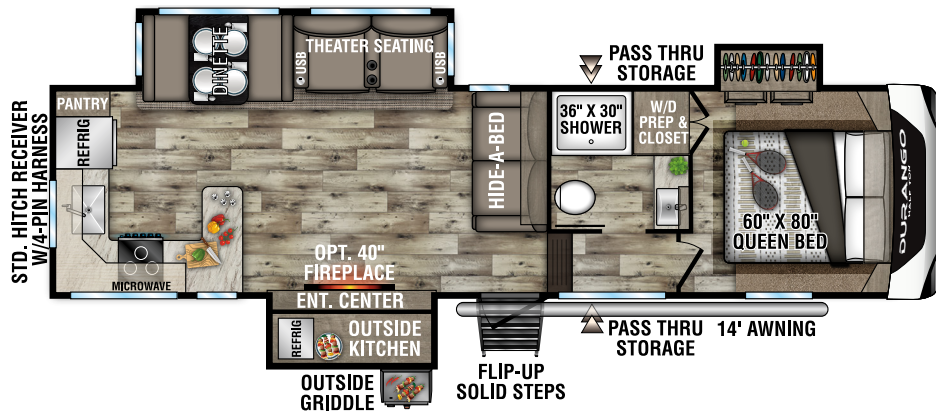
D250RED

UVW - 7,570
 Exterior Length - 29' 1"
 Sleeps - 6



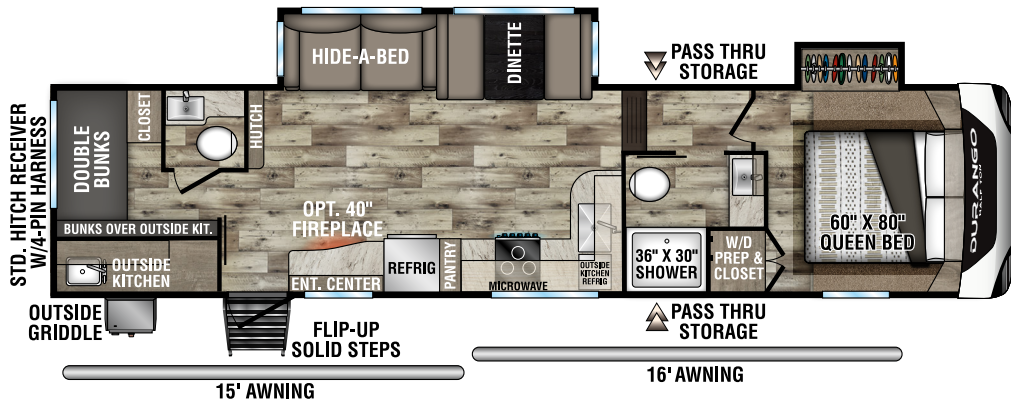
D256RKT

UVW - 8,660
 Exterior Length - 33' 9"
 Sleeps - 6



NEW D274BHD

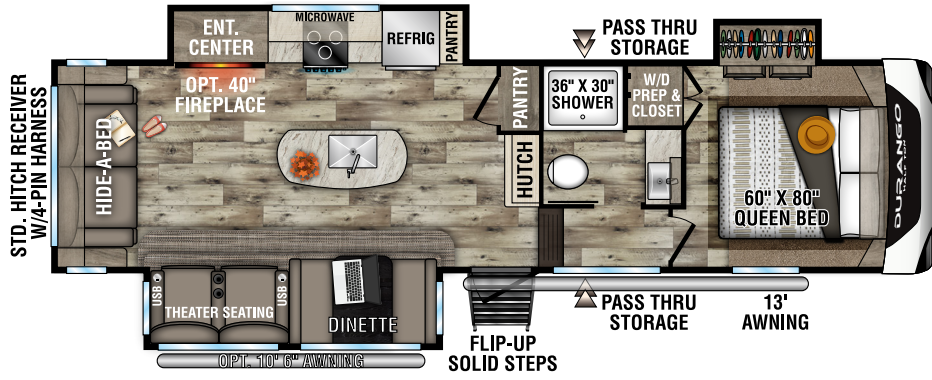
UVW - 9,170
 Exterior Length - 36'
 Sleeps - 9



2022 DURANGO HALF-TON FIFTH WHEELS

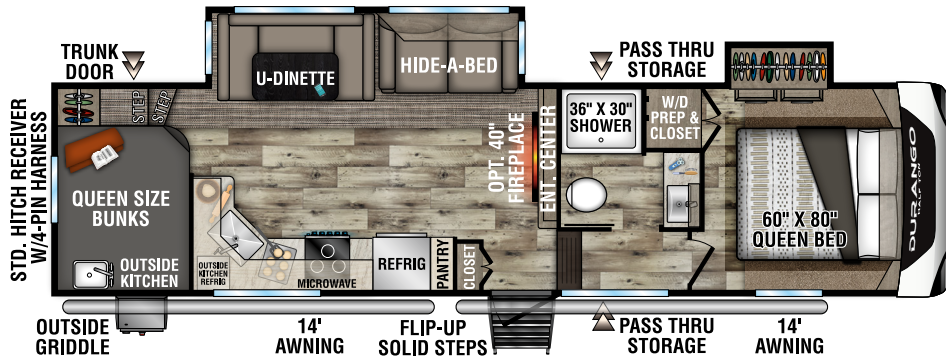
D283RLT

UVW - 8,660
 Exterior Length - 32' 11"
 Sleeps - 6



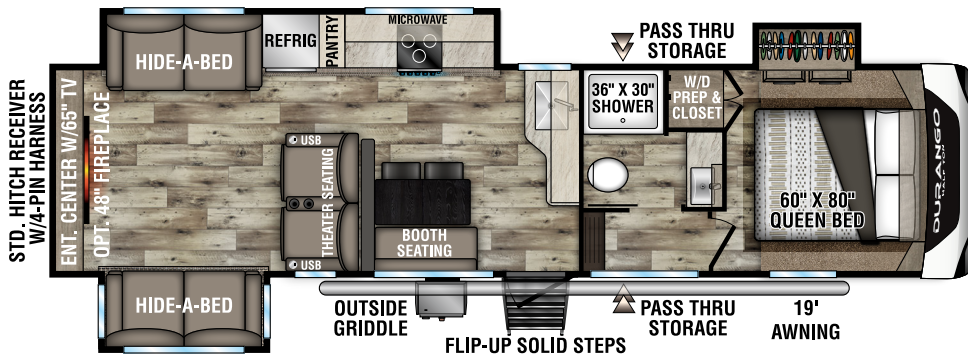
D286BHD

UVW - 8,550
 Exterior Length - 33' 7"
 Sleeps - 10



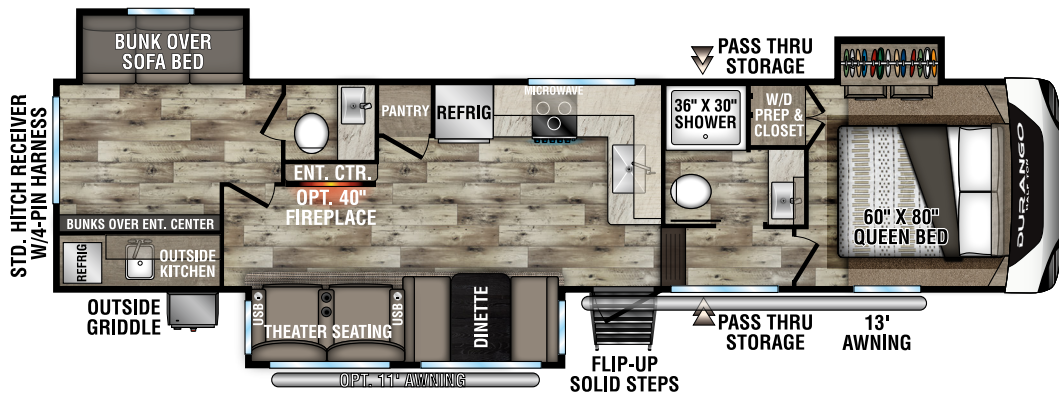
D290RLT

UVW - 8,980
 Exterior Length - 34' 5"
 Sleeps - 6



D291BHT

UVW - 9,740
 Exterior Length - 37' 5"
 Sleeps - 9



2022 DURANGO HALF-TON FEATURES



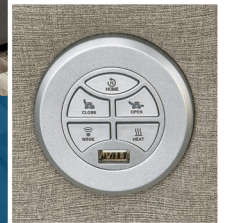
OPTIONAL 18 CU FT RESIDENTIAL REFRIGERATOR with temperature controls and easy slide out freezer drawer below.



Drop-in **COOKTOP** with glass cover and **OVEN**.



THEATER SEATING with cupholders, USB plug, heat, massage and power recline/decline.



DEEP UNDERMOUNT STAINLESS SINK with cover and residential faucet with sprayer.

SMART LED TV, JBL 2.0 SOUND BAR with Bluetooth wireless connectivity and **COZY AMBIENCE** from the optional 40-inch wide-view fireplace. (D290RLT shown)



REDESIGNED FRONT BEDROOM with 60 x 80 bed.



STANDARD FLIP-UP ENTRY STEP provides solid footing, coming and going. Handy friction hinge and screenshot auto-door-close feature.



PASS-THROUGH STORAGE features motion-lit technology.



Harness the power of the sun to run your TV and outlets. Roof-mounted solar prep standard.

OPTIONAL "OFF THE GRID" SOLAR PACKAGE by Xantrex (220W solar panel, 30A MPPT solar charge controller w/ MPPT remote panel, 2,000W True Sine Wave Inverter w/all outlets "hot").

OPTIONAL PREMIUM "OFF THE GRID" SOLAR PACKAGE Powered by Xantrex (now features 440W total solar power – we use (2) 220W solar panels tied in series because they produce more power than just (1) 440W solar panel)



DURANGO TOWING PACKAGE 3,000 LB tow rating, 300 LB hitch rating.

2022 DURANGO HALF-TON STANDARDS

CONSTRUCTION FEATURES

- Steel Powder Coated Frame
- R-13* 2" Block Foam Bonded Sidewalls w/ EGS Metal Backing Strips (to support all interior cabinets)
- Lamilux® Gelcoat Fiberglass
- 1-Piece ABS Slideroom Bottoms; Slideroom Floors Insulated
- 1-Piece, Seamless, Walk-on, Tufflex Roofing Material w/Lifetime Warranty
- Pex® In-Floor Heated Waterlines & Kitchen Gray Pipes (all waterlines & drainlines are located above all insulation)
- Reinforced Heavy-Duty Fiberglass Front Cap (w/maximum turning radius on short bed trucks)
- 6' 2" Tall Main Floor Sliderooms

EXTERIOR FEATURES

- Dexter® Axles w/Self Adjusting Brakes & Height Adjusting Hangers
- 6-Lug Heavy-Duty Aluminum Rims w/16" Nitro Filled Tires
- 100% Exterior LED Running Lights & Taillights
- LED Front Docking Light & Sewer Hookup Light
- Electric Awning w/LED Lights
- Electric Front Jacks
- 3" x 14" Foam-Core In-Floor Straight-Line Heating System w/35,000 BTU Furnace
- Heated Water Convenience Center (includes black tank flush, power fresh tank water fill, winterizing system, outside shower)
- Fully-Finished, Heated & Sealed Basement Storage Compartment
- Heated & Enclosed Dump Valves
- Gas/Electric/DSI Water Heater
- Swing-Away Assist Grab Handle
- Dual Lock Basement Storage Slam Latches
- Satellite Pre-Wire (roof & ground)
- Pre-Wired for Exterior TV
- Full-Perimeter Rain Gutter System (includes rear & additional gutters over sliderooms)
- LP Quick Connect
- Under Mount Spare Tire
- 30 AMP Electrical Service

LIVING ROOM/KITCHEN FEATURES

- Pullout Sprayer Faucet
- Storage Shelf under Kitchen Sink
- Heavy-Duty 100 LB Drawer Glides on Every Drawer
- Baltic Birch Drawer Boxes
- Microwave
- Kitchen Window (most models)
- All-Wood Lumber Core Cabinets w/ Hardwood Doors
- 5" Black Cabinet Hardware
- XL Toggle Light Switches
- All LED Ceiling & Cabinet Lights w/Multiple On/Off Switches
- All Kitchen OH Cabinets have Shelf & Extra-Tall Slide Lips

BATHROOM/BEDROOM FEATURES

- Shower Skylight
- Porcelain Foot-Flush Toilet
- All LED Lights in Bed & Bath w/Multiple Large Switches
- 12V Vent Fans in all Baths
- Bathroom Linen Closet (where available)
- Padded Headboard w/Shelf & Power at the Head of all Beds
- XL Under-Bed Storage
- Bedroom TV Pre-Wire

*Calculated R-Value

NOTE: Options and Packages can be found on the website



TUFFLEX ROOFING
by Dacor Products
LIFETIME WARRANTY!



Two attic vents are in each RV, providing vital escape routes for unwanted moisture that accumulates during use.



Fully-heated, insulated and enclosed underbelly!
R-13*sidewalls, R-24* roof and floor.
*Calculated R-Value

Dealer:



Portions of this brochure were used with the expressed authority of Dexter Axle, but Dexter Axle is not responsible for the accuracy of the information contained herein.



985 N 900 W SHIPSEWANA, IN 46565

E: KZ@KZ-RV.COM

WWW.KZ-RV.COM

Due to continual research and advances, manufacturer reserves the right to change specifications, design, price and equipment without notice, and assumes no responsibility for any error in this literature. Some items shown are not included as standard or optional equipment.

©2021KZ | 11/9/21 | 30M