



# ESCAPE

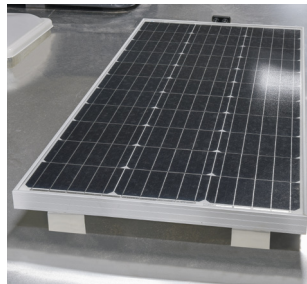
## ULTRA LIGHTWEIGHT TRAVEL TRAILERS



The ultimate adventurer's RV, Escape is built for campers who want to have some fun. Starting at just over 18' feet and 3,000 pounds, Escape is ready for your next getaway!



**DICOR TUFFLEX PVC**  
roof membrane  
w/lifetime warranty and now  
with 3/8" walkable roof



**OFF-GRID/OFF-ROAD  
PACKAGE** (optional)



E191BHK | Ashwood décor

### KEY FEATURES:

- 3/8" Fully walkable roof
- Automotive style front window
- 13.5 BTU low pro roof mounted A/C
- Dicor Tufflex PVC roof membrane w/lifetime warranty
- Off-grid/off-road package (optional)

Travel Trailers	E14 HATCH	E17 HATCH	E18 HATCH	E20 HATCH	E181RB	E191BHK	E201BH	E201TB	E211RB	E231BH
UVW (Unloaded Vehicle Weight)*	2,770	3,260	3,460	3,470	3,270	3,470	3,610	3,520	3,840	4,140
Dry Hitch Weight*	360	520	540	540	480	470	490	480	450	470
Dry Axle Weight*	2,410	2,740	2,920	2,930	2,790	3,000	3,120	3,040	3,390	3,670
CCC (Cargo Carrying Capacity)	730	740	760	930	730	775	790	880	1,160	860
GVWR	3,500	4,000	4,220	4,400	4,000	4,245	4,400	4,400	5,000	5,000
Interior Height	78"	78"	78"	78"	78"	78"	78"	78"	78"	78"
Exterior Height w/o A/C (unless noted)**	112"	112"	112"	112"	112"	112"	112"	112"	118"	118"
Exterior Width	90"	90"	90"	90"	90"	90"	90"	90"	90"	90"
Exterior Length***	18' 10"	22'	22'	23' 10"	22' 1"	22' 1"	23' 9"	23' 9"	25' 2"	27' 3"
Refrigerator (cu. feet)	8	8	8	8	8	8	8	8	8	8
Water Heater Cap. (gal. LP w/DSI)	6	6	6	6	6	6	6	6	6	6
Fresh Water Cap. (gal.)	20	20	20	20	20	20	20	20	20	20
Waste Water Cap. (gal.)	30	30	30	30	26	30	30	30	30	30
Gray Water Cap. (gal.)	30	30	30	30	28	28	28	30	30	30
LP Gas Cap. (lbs.)	20	20	20	20	20	20	20	20	20	20
Furnace BTUs (1,000s)	20	20	20	20	20	20	20	20	20	20
Tire Size	14"	15"	15"	15"	15"	15"	15"	15"	14"	14"
Awning	12'	14'	14'	14'	11'	14'	14'	14'	14'	14'

\*This weight reflects the rolling average unit weight for each model. Your trailer weight will vary according to optional equipment. \*\*This exterior height is with A/C. \*\*\* Exterior length is measured from rear of bumper to leading edge of coupler.

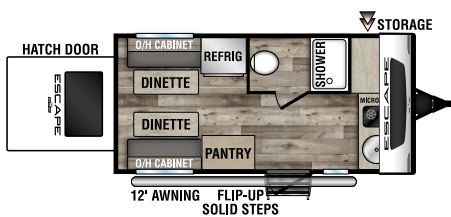
# 2022 ESCAPE TRAVEL TRAILERS

## STANDARDS

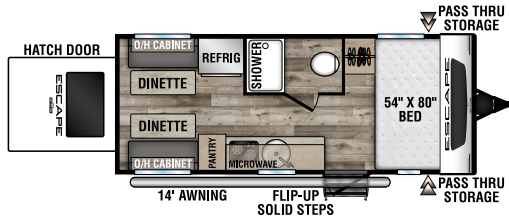
- Tinted Windows
- Diamond Plate Rock Guard
- Rear Bumper w/Sewer Hose Storage
- Self-Adjust Electric Brakes
- Radial Tires
- 20# LP Bottle
- Cable Hookup
- City Water Fill
- Digital TV Antenna
- 12V Converter w/Charger
- 6 GAL LP DSI Water Heater
- Monitor Panel
- Linoleum Throughout
- 2-Burner Cooktop
- Microwave
- 8 CU FT 12V Refrigerator
- Amish-Crafted Rail Style Cabinet Doors w/Modern Handles
- LED Interior Lighting
- Automotive Front Windshield



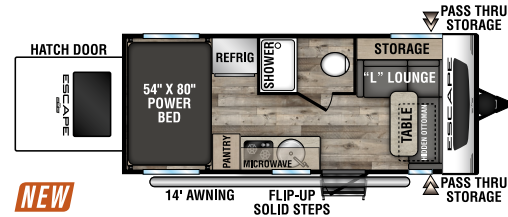
NOTE: Options and packages can be found on the website



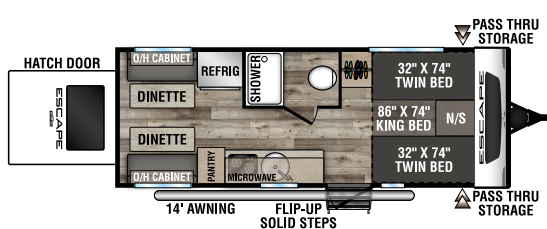
**E14 HATCH**  
UUV - 2,770 | Exterior Length - 18'10" | Sleeps - 2



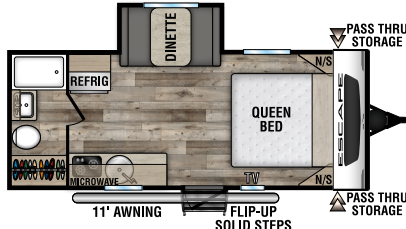
**E17 HATCH**  
UUV - 3,260 | Exterior Length - 22' | Sleeps - 4



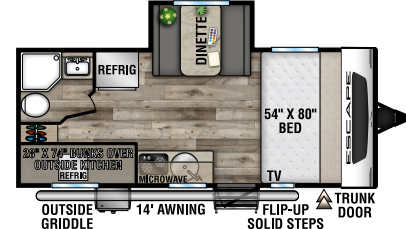
**E18 HATCH**  
UUV - 3,460 | Exterior Length - 22' | Sleeps - 4



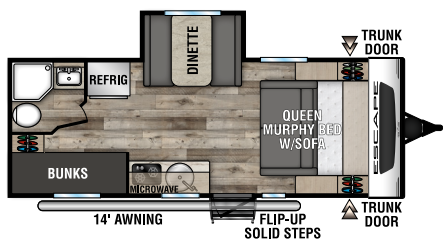
**E20 HATCH**  
UUV - 3,470 | Exterior Length - 23'10" | Sleeps - 4



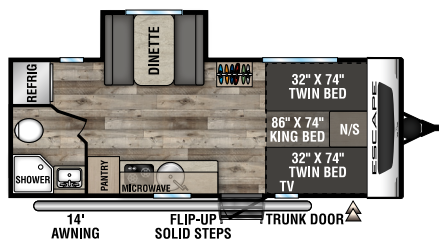
**E181RB**  
UUV - 3,270 | Exterior Length - 22'1" | Sleeps - 3



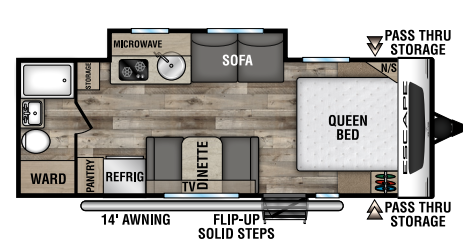
**E191BHK**  
UUV - 3,470 | Exterior Length - 22'1" | Sleeps - 5



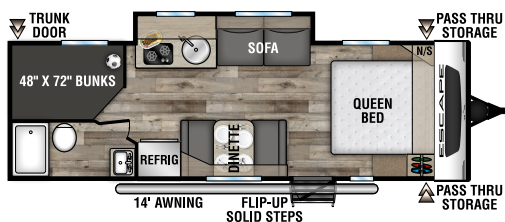
**E201BH**  
UUV - 3,610 | Exterior Length - 23'9" | Sleeps - 5



**E201TB**  
UUV - 3,520 | Exterior Length - 23'9" | Sleeps - 3



**E211RB**  
UUV - 3,840 | Exterior Length - 25'2" | Sleeps - 4



**E231BH** UUV - 4,140 | Exterior Length - 27'3" | Sleeps - 8



Dealer: \_\_\_\_\_



985 N 900 W SHIPSEWANA, IN 46565

E: KZ@KZ-RV.COM

WWW.KZ-RV.COM

Due to continual research and advances, manufacturer reserves the right to change specifications, design, price and equipment without notice, and assumes no responsibility for any error in this literature. Some items shown are not included as standard or optional equipment.

©2021KZ | 11/9/21 | 30M