



# SPORTSMEN CLASSIC

ULTRA LIGHTWEIGHT TRAVEL TRAILERS



Shown with optional front window

Sportsmen Classic is true to its name. It has been a customer favorite for decades, and there is no question as to why. Sportsmen Classic offers standard features fit to equip you and your family to explore the great outdoors together!



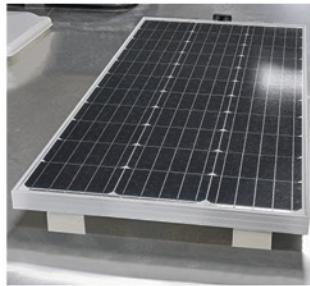
191BHK | Ashwood décor

## KEY FEATURES:

- 3/8" Fully walkable roof
- Dicor Tufflex PVC roof membrane w/lifetime warranty
- 4 Scissor style stabilizer jacks
- Walk-around queen bed (select models)
- Spacious shower



**DICOR TUFFLEX PVC** roof membrane w/lifetime warranty and now with 3/8" walkable roof



**OFF-GRID/OFF-ROAD PACKAGE** (optional)

Ultra Lightweight Travel Trailers	130RB	160QB	160RBT	170MB	180BH	180RBT	180TH	181BH	191BHK
UVW (Unloaded Vehicle Weight)*	2,240	2,900	2,740	2,870	2,690	3,370	3,260	2,980	3,420
Dry Hitch Weight*	270	360	310	420	280	360	460	390	400
Dry Axle Weight*	1,970	2,540	2,430	2,450	2,410	3,010	2,800	2,590	3,020
CCC (Cargo Carrying Capacity)	560	600	760	630	810	1,130	1,740	520	580
GVWR	2,800	3,500	3,500	3,500	3,500	4,500	5,000	3,500	4,000
Interior Height	78"	78"	78"	78"	78"	78"	78"	78"	78"
Exterior Height w/o A/C (unless noted)**	107"	107"	107"	112"	107"	118***	107"	112"	112"
Exterior Width	84"	90"	90"	90"	84"	90"	90"	84"	90"
Exterior Length***	16' 9"	22'	19' 2"	22'	21' 5"	21' 9"	21' 8"	21' 5"	22' 1"
Refrigerator (cu. feet)	3	8	8	8	8	8	8	8	8
Water Heater Cap. (gal. LP w/DSI)	6	6	6	6	6	6	6	6	6
Fresh Water Cap. (gal.)	20	20	20	20	20	20	38	20	20
Waste Water Cap. (gal.)	26	26	26	26	26	30	30	26	30
Gray Water Cap. (gal.)	26	26	30	28	26	28	30	26	28
LP Gas Cap. (lbs.)	20	20	20	20	20	20	20	20	20
Furnace BTUs (1,000s)	20	20	20	20	20	20	20	20	20
Tire Size	14"	14"	14"	14"	14"	14"	15"	14"	15"
Awning	10'	12'	12'	12'	13'	13'	13'	13'	14'

\*This weight reflects the rolling average unit weight for each model. Your trailer weight will vary according to optional equipment. \*\*This exterior height is with A/C. \*\*\* Exterior length is measured from rear of bumper to leading edge of coupler.

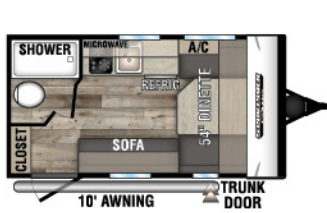
# 2022 SPORTSMEN CLASSIC TRAVEL TRAILERS

## STANDARDS

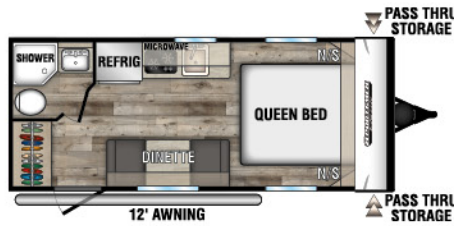
- KZ Exclusive Tough Shield .030 Exterior Metal
- R-7\* Insulation
- Front Diamond Plate
- Tinted Windows
- Radial Tires
- Self-Adjust Electric Brakes
- Rear Bumper w/Sewer Hose Storage
- Digital TV Antenna
- Cable Hookup
- City Water Fill
- 12V Converter w/Charger
- LP Tank
- 2-Burner Range
- Microwave
- 8 CU FT 12 V Refrigerator (N/A 130RB)
- Single-Bowl Sink
- 6-Gallon LP DSI Water Heater
- Amish-Crafted Rail Style Cabinet Doors w/Modern Handles
- Overhead Cabinets
- LED Interior Lights
- Shower & Toilet
- Tank Monitor Panel

\*Calculated R-Value

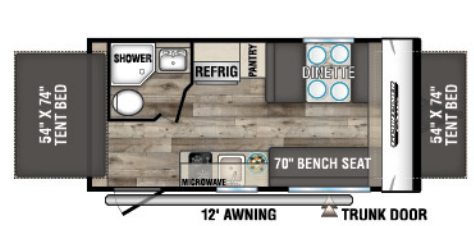
NOTE: Options and packages can be found on the website



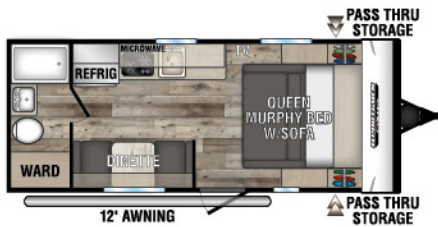
**130RB**  
UWV - 2,240 | Exterior Length - 16' 9" | Sleeps - 2



**160QB**  
UWV - 2,900 | Exterior Length - 22' | Sleeps - 3



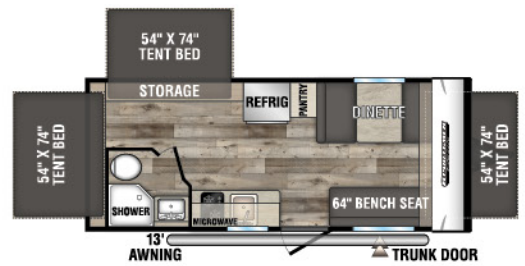
**160RBT**  
UWV - 2,740 | Exterior Length - 19' 2" | Sleeps - 6



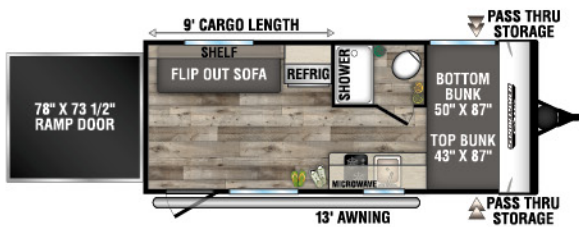
**170MB**  
UWV - 2,870 | Exterior Length - 22' | Sleeps - 3



**180BH**  
UWV - 2,690 | Exterior Length - 21' 5" | Sleeps - 4



**180RBT**  
UWV - 3,370 | Exterior Length - 21' 9" | Sleeps - 8



**180TH TOY HAULER** UWV - 3,260 | Exterior Length - 21' 8" | Sleeps - 4



**181BH** UWV - 2,980 | Exterior Length - 21' 5" | Sleeps - 5



**191BHK**  
UWV - 3,420 | Exterior Length - 22' 1" | Sleeps - 5



Dealer:



985 N 900 W SHIPSEWANA, IN 46565

E: KZ@KZ-RV.COM

WWW.KZ-RV.COM

Due to continual research and advances, manufacturer reserves the right to change specifications, design, price and equipment without notice, and assumes no responsibility for any error in this literature. Some items shown are not included as standard or optional equipment.

©2021KZ | 11/9/21 | 30M