



RECREATIONAL
VEHICLES

CONNECT

LIGHTWEIGHT TRAVEL TRAILERS



C312RE | Ashwood décor



CONNECT SE KEY FEATURES:

- Exterior docking station
- RV Airflow system
- One Control monitor/switch panel
- Lamilux exterior fiberglass w/UVA & UVB resistant gelcoat
- Tufflex Roof w/lifetime warranty

CONNECT KEY FEATURES:

- Exterior docking station
- Solar roof prep
- RV Airflow system
- One Control monitor/switch panel
- 82" Interior ceiling height

2023
DÉCOR



ASHWOOD



SHALE



C221FKSE | Ashwood décor

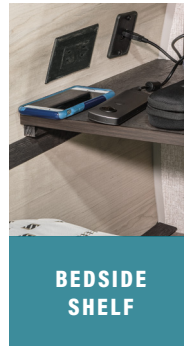
2023 CONNECT SE TRAVEL TRAILERS

C221RESE | Ashwood décor

Connect SE is the ultimate travel trailer offering spacious floorplans, yet still lightweight enough for the adventure of your dreams. In Connect SE, you'll find that exploration still has all the comforts of home.



The KZ **TRUE 2 WARRANTY** is a 2-year hitch-to-bumper limited warranty that's true to its name. The gold standard in RV protection, True 2 provides double the coverage of the industry norm. Plus, our warranty is backed by the craftsmanship and quality we're known for, so you can Go. Camp. Live. Wherever your adventure takes you, know that you're covered in your KZ.



BEDSIDE SHELF



Sit or sleep in this **SPACIOUS "L" SOFA** with pull out ottomans

Connect SE Travel Trailers	C191MBSE	C210MBKSE	C211MKSE	C221FKKSE	C221RBSE	C221RESE	C231BHKSE	C241BHKSE	C251RLSE	C261BHSE	C271BHKSE	C312BHKSE
UVW (Unloaded Vehicle Weight)*	4,700	4,630	5,150	5,490	5,400	5,240	5,300	5,380	5,720	6,210	5,930	7,290
Dry Hitch Weight*	600	600	560	860	720	570	710	640	685	860	820	740
Dry Axle Weight*	4,100	4,030	4,590	4,630	4,680	4,670	4,590	4,740	5,035	5,350	5,110	6,550
CCC (Cargo Carrying Capacity)	1,800	1,870	1,350	1,510	1,600	1,760	1,700	1,620	1,280	1,790	1,570	1,710
GVWR	6,500	6,500	6,500	7,000	7,000	7,000	7,000	7,000	7,000	8,000	7,500	9,000
Interior Height	78"	78"	78"	78"	78"	78"	78"	78"	78"	78"	78"	78"
Exterior Height w/ A/C	10' 10"	10' 10"	10' 10"	10' 10"	10' 10"	10' 10"	10' 10"	10' 10"	11' 0"	11' 0"	10' 10"	11' 2"
Exterior Width	96"	96"	96"	96"	96"	96"	96"	96"	96"	96"	96"	96"
Exterior Length**	22' 6"	25' 1"	26' 1"	26' 8"	27'	27' 1"	27' 4"	29' 1"	29' 7"	32' 9"	32' 1"	36' 7"
Refrigerator (cu. feet)	10	10	10	10	10	10	10	10	10	10	10	10
Water Heater Cap. (gal. G/E w/DSI)	6	6	6	6	6	6	6	6	6	6	6	6
Fresh Water Cap. (gal.)	45	45	45	45	45	45	45	45	45	45	45	45
Waste Water Cap. (gal.)	32	32	32	32	32	32	32	32	32	32	32	32
Gray Water Cap. (gal.)	32	32	32	64	64	32	32	32	32	32	64	32
LP Gas Cap. (lbs.)	40	40	40	40	40	40	40	40	40	40	40	40
Furnace BTUs (1,000s)	30	30	30	30	30	30	30	30	30	30	30	30
Tire Size	15"	15"	15"	15"	15"	15"	15"	15"	15"	15"	15"	15"
Awning	14'	17'	18'	18'	16'	18'	19'	18'	19'	20'	20'	19'

*This weight reflects the rolling average unit weight for each model. Your trailer weight will vary according to optional equipment.

**Exterior length is measured from rear of bumper to leading edge of coupler.

2023 CONNECT TRAVEL TRAILERS

C241RLK | Shale décor



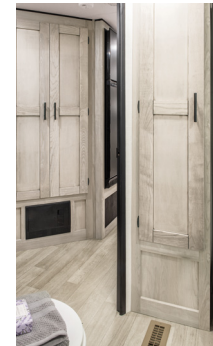
Connect is modern and sleek with an affordable price tag! It comes standard with a king-size bed, residential-size kitchen, and entertainment center.



The KZ **TRUE 2 WARRANTY** is a 2-year hitch-to-bumper limited warranty that's true to its name. The gold standard in RV protection, True 2 provides double the coverage of the industry norm. Plus, our warranty is backed by the craftsmanship and quality we're known for, so you can Go. Camp. Live. Wherever your adventure takes you, know that you're covered in your KZ.



ENTERTAINMENT CENTER

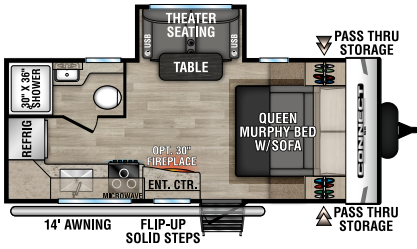


Large shower surround, **ROOMY LINEN CLOSET**, and shelf w/ towel hooks for organization.

Connect Travel Trailers	C241RLK	C251BHK	C261RB	C261RKK	C272FK	C282FKK	C291BHK	C292RDK	C312RE	C313MK	C322BHK
UVW (Unloaded Vehicle Weight)*	5,770	5,940	6,240	6,310	6,900	7,260	6,820	7,170	7,310	8,130	7,970
Dry Hitch Weight*	600	650	770	680	820	1,100	810	790	875	910	890
Dry Axle Weight*	5,170	5,290	5,470	5,530	6,080	6,160	6,010	6,380	6,435	7,220	7,080
CCC (Cargo Carrying Capacity)	1,495	1,435	1,105	1,030	1,900	1,540	1,980	2,005	2,250	1,662	1,590
GVWR	7,265	7,375	7,345	7,340	8,800	8,800	8,800	9,175	9,560	9,792	9,560
Interior Height	82"	82"	82"	82"	82"	82"	82"	82"	82"	82"	82"
Exterior Height w/ A/C	11' 2"	11' 2"	11' 2"	11' 4"	11' 4"	11' 4"	11' 4"	11' 4"	11' 6"	11' 6"	11' 6"
Exterior Width	96"	96"	96"	96"	96"	96"	96"	96"	96"	96"	96"
Exterior Length**	28' 11"	29' 5"	30' 4"	30' 8"	31' 1"	32' 3"	33' 11"	32' 5"	36' 1"	36' 1"	37' 1"
Refrigerator (cu. feet)	8	8	8	8	8	8	8	8	8	8	8
Water Heater Cap. (gal. G/E w/DSI)	6	6	6	6	6	6	6	6	6	6	6
Fresh Water Cap. (gal.)	45	45	45	45	45	45	45	45	45	45	45
Waste Water Cap. (gal.)	32	32	32	32	32	32	32	32	32	32	64
Gray Water Cap. (gal.)	32	64	64	64	64	64	64	64	32	32	32
LP Gas Cap. (lbs.)	40	40	40	40	40	40	40	40	40	40	40
Furnace BTUs (1,000s)	30	30	30	30	30	30	30	30	30	30	30
Tire Size	15"	15"	15"	15"	15"	15"	15"	15"	15"	15"	15"
Awning	18'	18'	19'	16'	20'	18'	20'	20'	19'	13'/11'	10'/11'

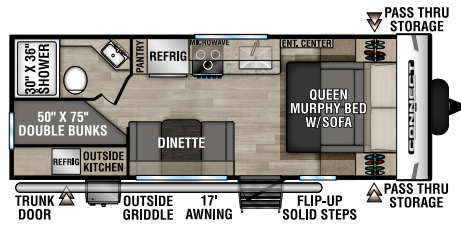
*This weight reflects the rolling average unit weight for each model. Your trailer weight will vary according to optional equipment.
 **Exterior length is measured from rear of bumper to leading edge of coupler.

2023 CONNECT SE FLOORPLANS



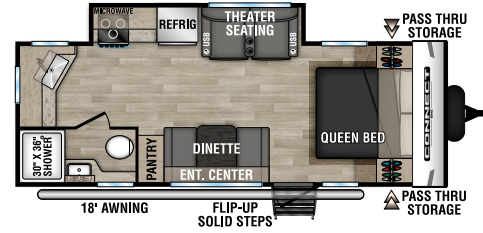
C191MBSE

UVW - 4,700 | Exterior Length - 22' 6" | Sleeps - 2



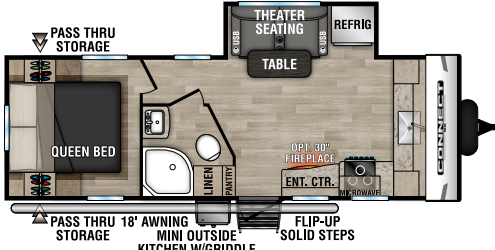
C210MBKSE

UVW - 4,630 | Exterior Length - 25' 1" | Sleeps - 7



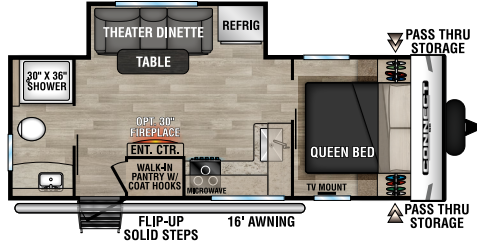
C211MKSE

UVW - 5,150 | Exterior Length - 26' 1" | Sleeps - 3



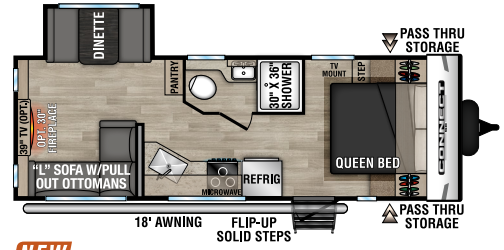
C221FKKSE

UVW - 5,490 | Exterior Length - 26' 8" | Sleeps - 2



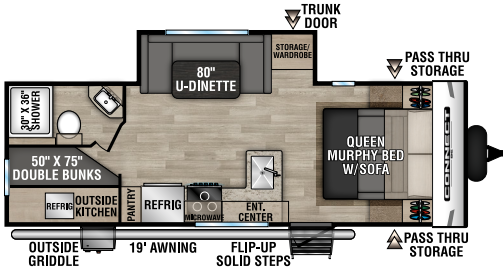
C221RBSE

UVW - 5,400 | Exterior Length - 27' | Sleeps - 3



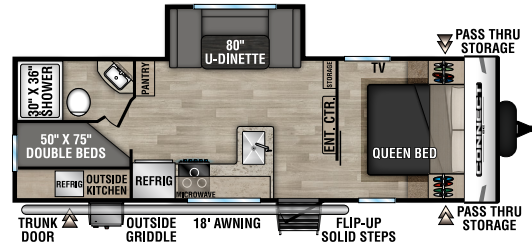
NEW C221RESE

UVW - 5,240 | Exterior Length - 27' 1" | Sleeps - 6



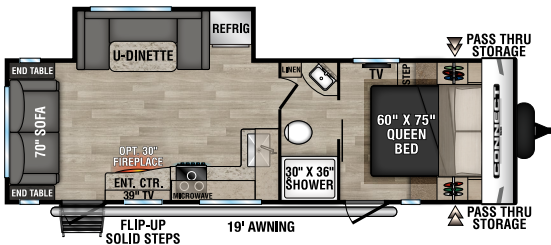
C231BHKSE

UVW - 5,300 | Exterior Length - 27' 4" | Sleeps - 8



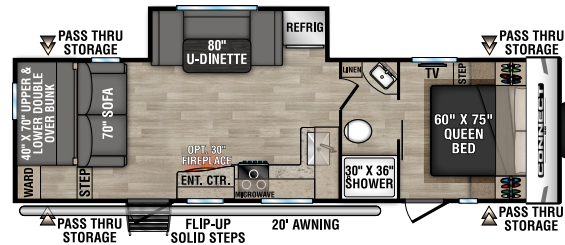
C241BHKSE

UVW - 5,380 | Exterior Length - 29' 1" | Sleeps - 8



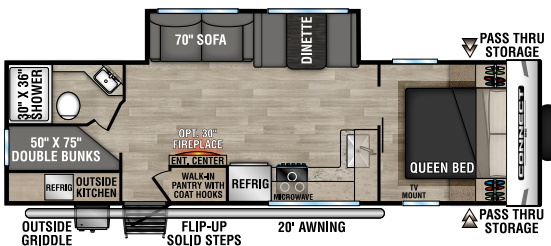
NEW C251RLSE

UVW - 5,720 | Exterior Length - 29' 7" | Sleeps - 6



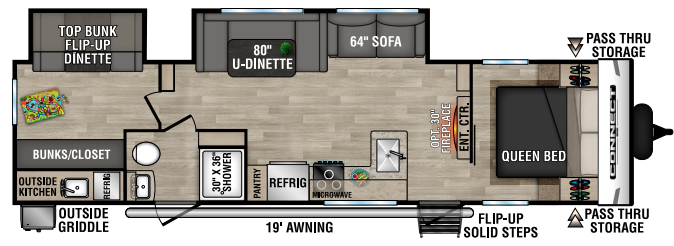
NEW C261BHSE

UVW - 6,210 | Exterior Length - 32' 9" | Sleeps - 9



C271BHKSE

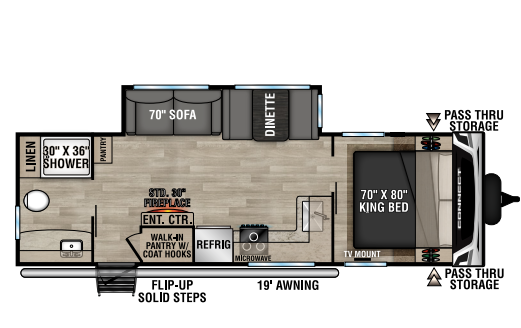
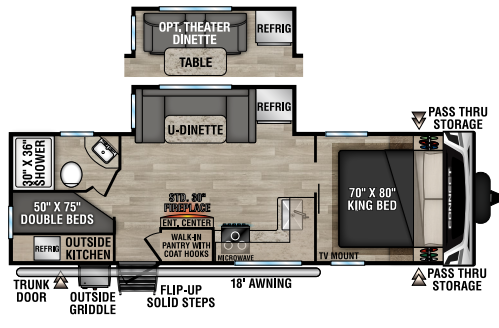
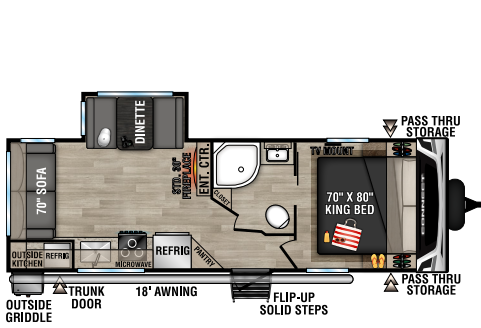
UVW - 5,930 | Exterior Length - 32' 1" | Sleeps - 9



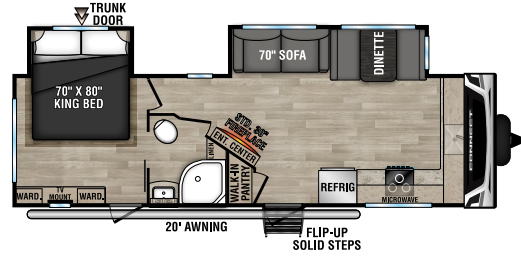
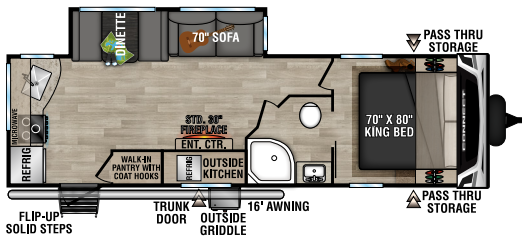
C312BHKSE

UVW - 7,290 | Exterior Length - 36' 7" | Sleeps - 9

2023 CONNECT FLOORPLANS

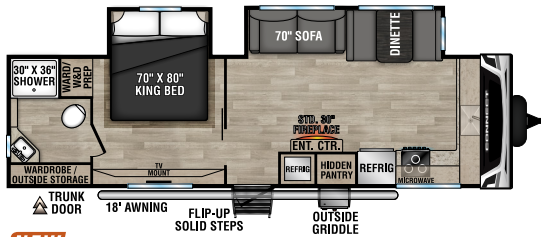


C241RLK UVV - 5,770 | Exterior Length - 28'11" | Sleeps - 5 **C251BHK** UVV - 5,940 | Exterior Length - 29'5" | Sleeps - 7 **C261RB** UVV - 6,240 | Exterior Length - 30'4" | Sleeps - 5



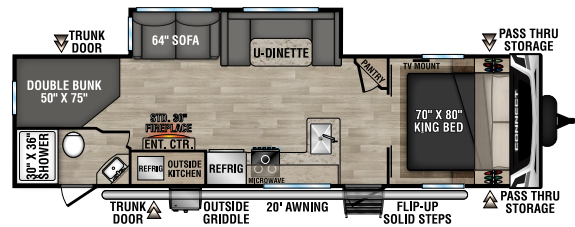
C261RKK UVV - 6,310 | Exterior Length - 30'8" | Sleeps - 5

C272FK UVV - 6,900 | Exterior Length - 31'1" | Sleeps - 5

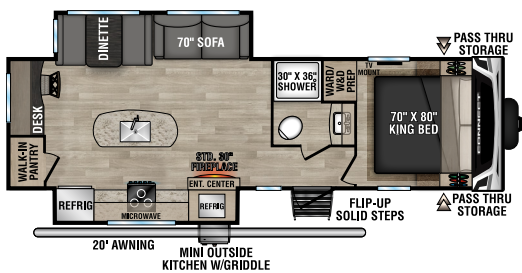


NEW

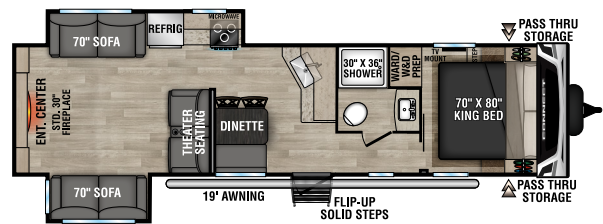
C282FKK UVV - 7,260 | Exterior Length - 32'3" | Sleeps - 5



C291BHK UVV - 6,820 | Exterior Length - 33'11" | Sleeps - 10

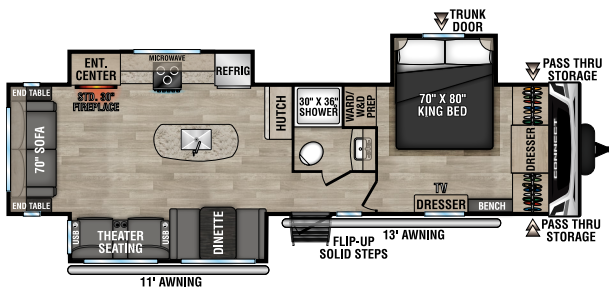


C292RDK UVV - 7,170 | Exterior Length - 32'5" | Sleeps - 5



NEW

C312RE UVV - 7,310 | Exterior Length - 36'1" | Sleeps - 6



C313MK UVV - 8,130 | Exterior Length - 36'1" | Sleeps - 3



C322BHK UVV - 7,970 | Exterior Length - 37'1" | Sleeps - 9

2023 CONNECT SE & CONNECT

STANDARDS

- 3/8" Fully Walk-On Roof Decking
- 1-Piece, Seamless, Walk-on, Tufflex Roofing Material w/Lifetime Warranty
- UVA & UVB Resistant Gelcoat Lamilux® Exterior Fiberglass
- Protective Front Diamond Plate
- KZ Easy-Catch Baggage Door Systems
- LED Exterior Lighting
- Outside Entertainment Prep (EXT 110V & cable outlets) (*Connect*)
- (4) Stabilizer Jacks
- (2) 20# LP Bottles w/Bottle Cover
- Satellite & Cable Hookups
- 30 AMP Service
- 13,500 BTU A/C
- Water Heater Bypass
- 3-Burner Range w/Oven
- High-Rise Faucet
- Hand-Crafted Mortise & Tenon Cabinet Doors
- Roller Ball Bearing Drawer Glides
- Linoleum Throughout
- LED Interior Lighting
- Nightshades
- Shower Surround
- Skylight over Tub
- Roof Vent in Bath
- High Thread Count Quilted Reversible Bedspread
- Gas Struts on Bed Base (*Connect*)
- 2" Accessory Hitch (*Connect*)
- Painted Fiberglass Front Cap w/Front Windshield (*Connect*)
- 82" Interior Ceiling Height (*Connect*)

NOTE: Options and packages can be found on the website

CLIMATE PACKAGE

BUILT FOR ALL SEASONS adds insulation so you can extend the camping season, with a fully enclosed, insulated, and heated underbelly to protect tanks and pipes (R-9* sidewalls, R-20* roof, and R-24* floor).

*Calculated R-Value



The **RV AIRFLOW SYSTEM** optimizes the airflow in your A/C system by increasing airflow by an average of 40%, which improves performance, speeds cooling times, and reduces noise in the RV.



LAMINATED AZDEL COMPOSITE PANELS 50% lighter than wood, no mold, mildew, rotting or warping, unaffected by temperature and humidity changes, superior thermal insulation, superior sound absorption and low VOCs; no formaldehyde.



KZ ENGAGE PACKAGE: powered by One Control. One Control monitors the battery levels, controls the sliderooms, leveling system, awning(s), inside/outside lighting, and TPMS prep.



LIGHTED TONGUE JACK assists setup & teardown.



Experience more freedom and adventure with our solar package. Get the convenience of powering your electronics any time, anywhere. **OPTIONAL "OFF THE GRID" SOLAR PACKAGE** includes (2) 110W flexible solar panels, 30A MPPT solar charge controller and 1,200W pure sine wave inverter.

Dealer:



CONNECT SE



CONNECT



985 N 900 W SHIPSEWANA, IN 46565

E: KZ@KZ-RV.COM

WWW.KZ-RV.COM

Due to continual research and advances, manufacturer reserves the right to change specifications, design, price, and equipment without notice, and assumes no responsibility for any error in this literature. Some items shown are not included as standard or optional equipment.

©2022KZ | 00/00/22 | 00M