



CONNECT

LIGHTWEIGHT TRAVEL TRAILERS



C312RE | Ashwood décor



CONNECT SE KEY FEATURES:

- Exterior docking station
- RV Airflow system
- One Control monitor/switch panel
- Lamilux exterior fiberglass w/UVA & UVB resistant gelcoat
- Tufflex Roof w/lifetime warranty

CONNECT KEY FEATURES:

- Exterior docking station
- Solar roof prep
- RV Airflow system
- One Control monitor/switch panel
- 82" Interior ceiling height

2023
DÉCOR



ASHWOOD



SHALE



C221FKKSE | Ashwood décor

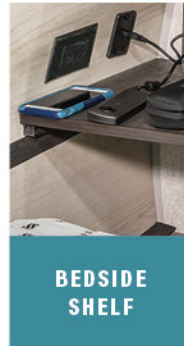
2023 CONNECT SE TRAVEL TRAILERS

C221RESE | Ashwood décor

Connect SE is the ultimate travel trailer offering spacious floorplans, yet still lightweight enough for the adventure of your dreams. In Connect SE, you'll find that exploration still has all the comforts of home.



The KZ **TRUE 2 WARRANTY** is a 2-year hitch-to-bumper limited warranty that's true to its name. The gold standard in RV protection, True 2 provides double the coverage of the industry norm. Plus, our warranty is backed by the craftsmanship and quality we're known for, so you can Go. Camp. Live. Wherever your adventure takes you, know that you're covered in your KZ.



BEDSIDE SHELF



Sit or sleep in this **SPACIOUS "L" SOFA** with pull out ottomans

| Connect SE Travel Trailers | C191MBSE | C210MBKSE | C211MKSE | C221FKKSE | C221RBSE | C221RESE | C231BHKSE | C241BHKSE | C251RLSE | C261BHSE | C271BHKSE | C312BHKSE |
|------------------------------------|----------|-----------|----------|-----------|----------|----------|-----------|-----------|----------|----------|-----------|-----------|
| UVW (Unloaded Vehicle Weight)* | 4,700 | 4,630 | 5,150 | 5,490 | 5,400 | 5,240 | 5,300 | 5,380 | 5,720 | 6,210 | 5,930 | 7,290 |
| Dry Hitch Weight* | 600 | 600 | 560 | 860 | 720 | 570 | 710 | 640 | 685 | 860 | 820 | 740 |
| Dry Axle Weight* | 4,100 | 4,030 | 4,590 | 4,630 | 4,680 | 4,670 | 4,590 | 4,740 | 5,035 | 5,350 | 5,110 | 6,550 |
| CCC (Cargo Carrying Capacity) | 1,800 | 1,870 | 1,350 | 1,510 | 1,600 | 1,760 | 1,700 | 1,620 | 1,280 | 1,790 | 1,570 | 1,710 |
| GVWR | 6,500 | 6,500 | 6,500 | 7,000 | 7,000 | 7,000 | 7,000 | 7,000 | 7,000 | 8,000 | 7,500 | 9,000 |
| Interior Height | 78" | 78" | 78" | 78" | 78" | 78" | 78" | 78" | 78" | 78" | 78" | 78" |
| Exterior Height w/ A/C | 10' 10" | 10' 10" | 10' 10" | 10' 10" | 10' 10" | 10' 10" | 10' 10" | 10' 10" | 11' 0" | 11' 0" | 10' 10" | 11' 2" |
| Exterior Width | 96" | 96" | 96" | 96" | 96" | 96" | 96" | 96" | 96" | 96" | 96" | 96" |
| Exterior Length** | 22' 6" | 25' 1" | 26' 1" | 26' 8" | 27' | 27' 1" | 27' 4" | 29' 1" | 29' 7" | 32' 9" | 32' 1" | 36' 7" |
| Refrigerator (cu. feet) | 10 | 10 | 10 | 10 | 10 | 10 | 10 | 10 | 10 | 10 | 10 | 10 |
| Water Heater Cap. (gal. G/E w/DSI) | 6 | 6 | 6 | 6 | 6 | 6 | 6 | 6 | 6 | 6 | 6 | 6 |
| Fresh Water Cap. (gal.) | 45 | 45 | 45 | 45 | 45 | 45 | 45 | 45 | 45 | 45 | 45 | 45 |
| Waste Water Cap. (gal.) | 32 | 32 | 32 | 32 | 32 | 32 | 32 | 32 | 32 | 32 | 32 | 32 |
| Gray Water Cap. (gal.) | 32 | 32 | 32 | 64 | 64 | 32 | 32 | 32 | 32 | 32 | 64 | 32 |
| LP Gas Cap. (lbs.) | 40 | 40 | 40 | 40 | 40 | 40 | 40 | 40 | 40 | 40 | 40 | 40 |
| Furnace BTUs (1,000s) | 30 | 30 | 30 | 30 | 30 | 30 | 30 | 30 | 30 | 30 | 30 | 30 |
| Tire Size | 15" | 15" | 15" | 15" | 15" | 15" | 15" | 15" | 15" | 15" | 15" | 15" |
| Awning | 14' | 17' | 18' | 18' | 16' | 18' | 19' | 18' | 19' | 20' | 20' | 19' |

*This weight reflects the rolling average unit weight for each model. Your trailer weight will vary according to optional equipment.
 **Exterior length is measured from rear of bumper to leading edge of coupler.

2023 CONNECT TRAVEL TRAILERS

C241RLK | Shale décor



Connect is modern and sleek with an affordable price tag! It comes standard with a king-size bed, residential-size kitchen, and entertainment center.



The KZ **TRUE 2 WARRANTY** is a 2-year hitch-to-bumper limited warranty that's true to its name. The gold standard in RV protection, True 2 provides double the coverage of the industry norm. Plus, our warranty is backed by the craftsmanship and quality we're known for, so you can Go. Camp. Live. Wherever your adventure takes you, know that you're covered in your KZ.



ENTERTAINMENT CENTER



Large shower surround, **ROOMY LINEN CLOSET**, and shelf w/ towel hooks for organization.

| Connect Travel Trailers | C241RLK | C251BHK | C261RB | C261RKK | C272FK | C282FKK | C291BHK | C292RDK | C312RE | C313MK | C322BHK |
|------------------------------------|---------|---------|--------|---------|--------|---------|---------|---------|--------|---------|---------|
| UVW (Unloaded Vehicle Weight)* | 5,770 | 5,940 | 6,240 | 6,310 | 6,900 | 7,260 | 6,820 | 7,170 | 7,310 | 8,130 | 7,970 |
| Dry Hitch Weight* | 600 | 650 | 770 | 680 | 820 | 1,100 | 810 | 790 | 875 | 910 | 890 |
| Dry Axle Weight* | 5,170 | 5,290 | 5,470 | 5,530 | 6,080 | 6,160 | 6,010 | 6,380 | 6,435 | 7,220 | 7,080 |
| CCC (Cargo Carrying Capacity) | 1,495 | 1,435 | 1,105 | 1,030 | 1,900 | 1,540 | 1,980 | 2,005 | 2,250 | 1,662 | 1,590 |
| GVWR | 7,265 | 7,375 | 7,345 | 7,340 | 8,800 | 8,800 | 8,800 | 9,175 | 9,560 | 9,792 | 9,560 |
| Interior Height | 82" | 82" | 82" | 82" | 82" | 82" | 82" | 82" | 82" | 82" | 82" |
| Exterior Height w/ A/C | 11' 2" | 11' 2" | 11' 2" | 11' 4" | 11' 4" | 11' 4" | 11' 4" | 11' 4" | 11' 6" | 11' 6" | 11' 6" |
| Exterior Width | 96" | 96" | 96" | 96" | 96" | 96" | 96" | 96" | 96" | 96" | 96" |
| Exterior Length** | 28' 11" | 29' 5" | 30' 4" | 30' 8" | 31' 1" | 32' 3" | 33' 11" | 32' 5" | 36' 1" | 36' 1" | 37' 1" |
| Refrigerator (cu. feet) | 8 | 8 | 8 | 8 | 8 | 8 | 8 | 8 | 8 | 8 | 8 |
| Water Heater Cap. (gal. G/E w/DSI) | 6 | 6 | 6 | 6 | 6 | 6 | 6 | 6 | 6 | 6 | 6 |
| Fresh Water Cap. (gal.) | 45 | 45 | 45 | 45 | 45 | 45 | 45 | 45 | 45 | 45 | 45 |
| Waste Water Cap. (gal.) | 32 | 32 | 32 | 32 | 32 | 32 | 32 | 32 | 32 | 32 | 64 |
| Gray Water Cap. (gal.) | 32 | 64 | 64 | 64 | 64 | 64 | 64 | 64 | 32 | 32 | 32 |
| LP Gas Cap. (lbs.) | 40 | 40 | 40 | 40 | 40 | 40 | 40 | 40 | 40 | 40 | 40 |
| Furnace BTUs (1,000s) | 30 | 30 | 30 | 30 | 30 | 30 | 30 | 30 | 30 | 30 | 30 |
| Tire Size | 15" | 15" | 15" | 15" | 15" | 15" | 15" | 15" | 15" | 15" | 15" |
| Awning | 18' | 18' | 19' | 16' | 20' | 18' | 20' | 20' | 19' | 13'/11' | 10'/11' |

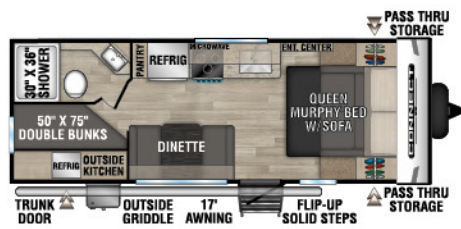
*This weight reflects the rolling average unit weight for each model. Your trailer weight will vary according to optional equipment.
**Exterior length is measured from rear of bumper to leading edge of coupler.

2023 CONNECT SE FLOORPLANS



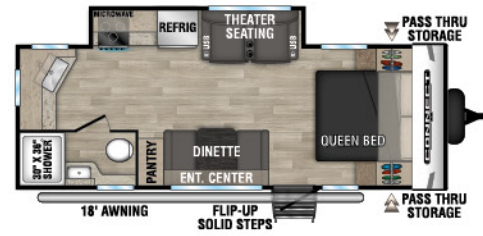
C191MBSE

UW - 4,700 | Exterior Length - 22' 6" | Sleeps - 2



C210MBKSE

UW - 4,630 | Exterior Length - 25' 1" | Sleeps - 7



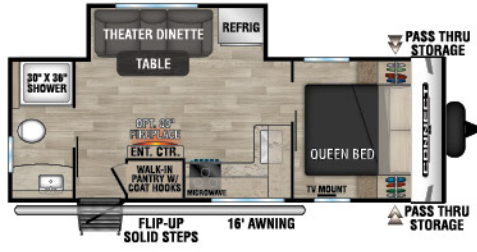
C211MKSE

UW - 5,150 | Exterior Length - 26' 1" | Sleeps - 3



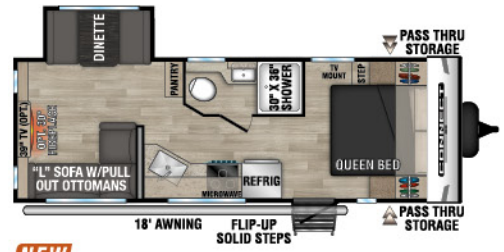
C221FKKSE

UW - 5,490 | Exterior Length - 26' 8" | Sleeps - 2



C221RBSE

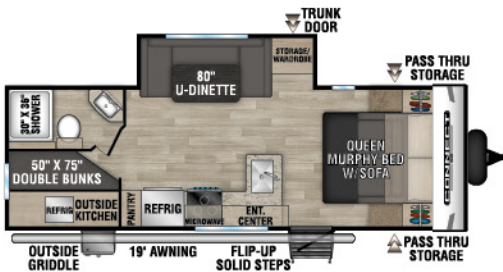
UW - 5,400 | Exterior Length - 27' | Sleeps - 3



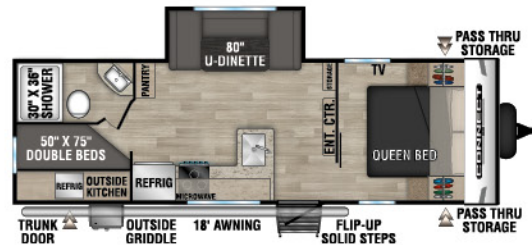
NEW

C221RESE

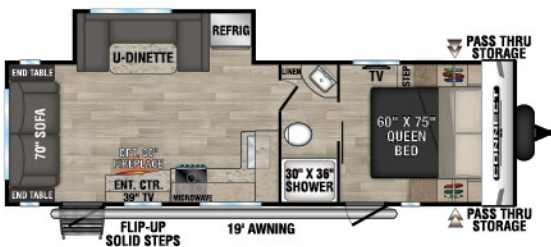
UW - 5,240 | Exterior Length - 27' 1" | Sleeps - 6



C231BHKSE UW - 5,300 | Exterior Length - 27' 4" | Sleeps - 8

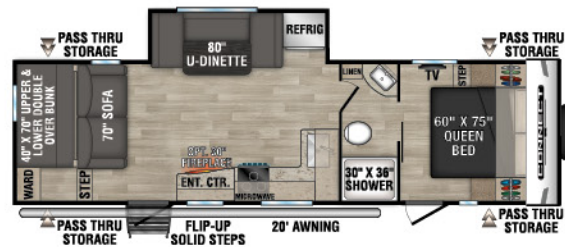


C241BHKSE UW - 5,380 | Exterior Length - 29' 1" | Sleeps - 8



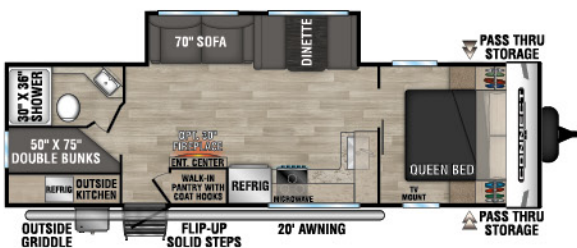
NEW

C251RLSE UW - 5,720 | Exterior Length - 29' 7" | Sleeps - 6

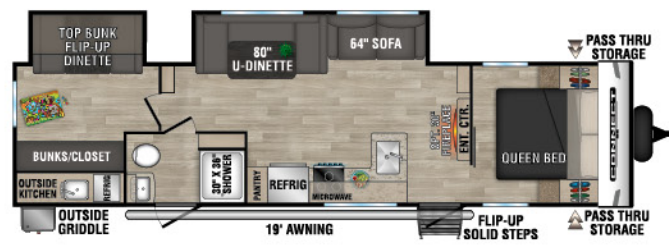


NEW

C261BHSE UW - 6,210 | Exterior Length - 32' 9" | Sleeps - 9

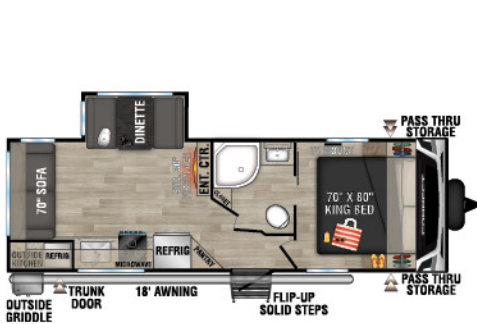


C271BHKSE UW - 5,930 | Exterior Length - 32' 1" | Sleeps - 9

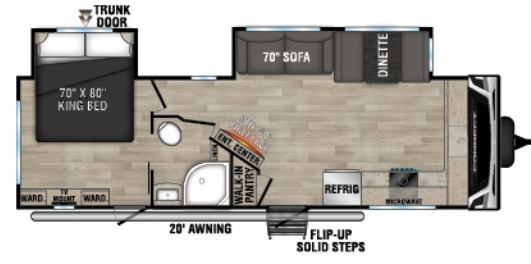
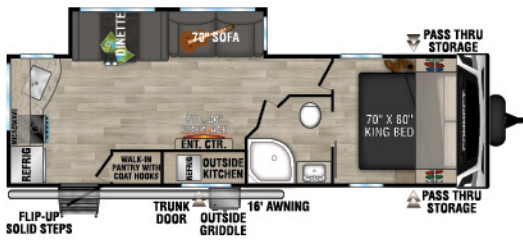


C312BHKSE UW - 7,290 | Exterior Length - 36' 7" | Sleeps - 9

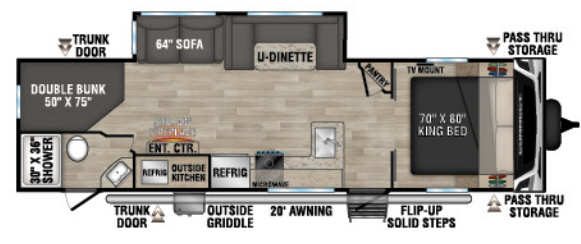
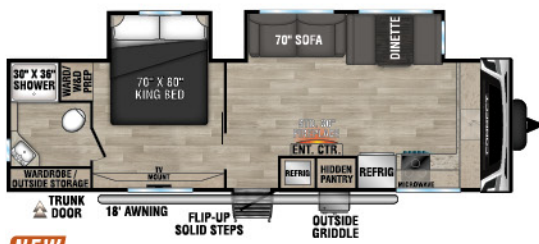
2023 CONNECT FLOORPLANS



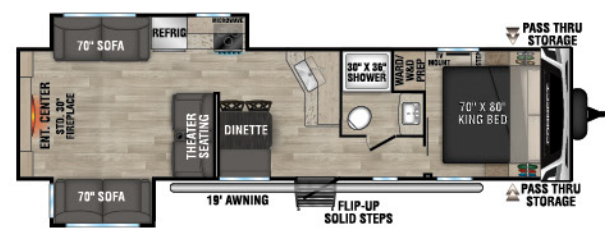
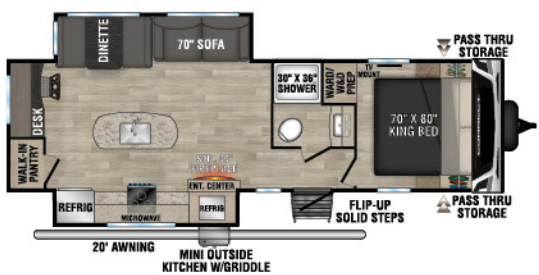
C241RLK UWW - 5,770 | Exterior Length - 28'11" | Sleeps - 5 C251BHK UWW - 5,940 | Exterior Length - 29'5" | Sleeps - 7 C261RB UWW - 6,240 | Exterior Length - 30'4" | Sleeps - 5



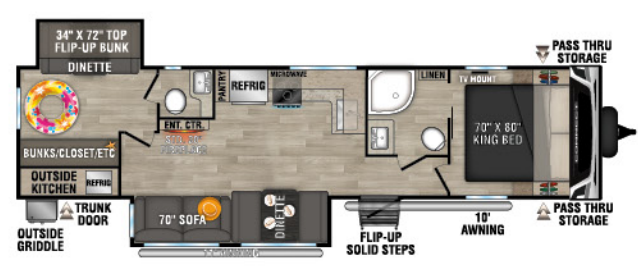
C261RKK UWW - 6,310 | Exterior Length - 30'8" | Sleeps - 5 C272FK UWW - 6,900 | Exterior Length - 31'1" | Sleeps - 5



NEW C282FKK UWW - 7,260 | Exterior Length - 32'3" | Sleeps - 5 C291BHK UWW - 6,820 | Exterior Length - 33'11" | Sleeps - 10



C292RDK UWW - 7,170 | Exterior Length - 32'5" | Sleeps - 5 **NEW** C312RE UWW - 7,310 | Exterior Length - 36'1" | Sleeps - 6



C313MK UWW - 8,130 | Exterior Length - 36'1" | Sleeps - 3 C322BHK UWW - 7,970 | Exterior Length - 37'1" | Sleeps - 9

2023 CONNECT SE & CONNECT

STANDARDS

- 3/8" Fully Walk-On Roof Decking
- 1-Piece, Seamless, Walk-on, Tufflex Roofing Material w/Lifetime Warranty
- UVA & UVB Resistant Gelcoat Lamilux® Exterior Fiberglass
- Protective Front Diamond Plate
- KZ Easy-Catch Baggage Door Systems
- LED Exterior Lighting
- Outside Entertainment Prep (EXT 110V & cable outlets) (Connect)
- (4) Stabilizer Jacks
- (2) 20# LP Bottles w/Bottle Cover
- Satellite & Cable Hookups
- 30 AMP Service
- 13,500 BTU A/C
- Water Heater Bypass
- 3-Burner Range w/Oven
- High-Rise Faucet
- Hand-Crafted Mortise & Tenon Cabinet Doors
- Roller Ball Bearing Drawer Glides
- Linoleum Throughout
- LED Interior Lighting
- Nightshades
- Shower Surround
- Skylight over Tub
- Roof Vent in Bath
- High Thread Count Quilted Reversible Bedspread
- Gas Struts on Bed Base (Connect)
- 2" Accessory Hitch (Connect)
- Painted Fiberglass Front Cap w/Front Windshield (Connect)
- 82" Interior Ceiling Height (Connect)

NOTE: Options and packages can be found on the website

CLIMATE PACKAGE

BUILT FOR ALL SEASONS adds insulation so you can extend the camping season, with a fully enclosed, insulated, and heated underbelly to protect tanks and pipes (R-9* sidewalls, R-20* roof, and R-24* floor).

*Calculated R-Value



RV AIRFLOW SYSTEMS™

The **RV AIRFLOW SYSTEM** optimizes the airflow in your A/C system by increasing airflow by an average of 40%, which improves performance, speeds cooling times, and reduces noise in the RV.

AZDEL

LAMINATED AZDEL COMPOSITE PANELS 50% lighter than wood, no mold, mildew, rotting or warping, unaffected by temperature and humidity changes, superior thermal insulation, superior sound absorption and low VOCs; no formaldehyde.



KZ ENGAGE PACKAGE: powered by One Control. One Control monitors the battery levels, controls the sliderooms, leveling system, awning(s), inside/outside lighting, and TPMS prep.



LIGHTED TONGUE JACK assists setup & teardown.



Experience more freedom and adventure with our solar package. Get the convenience of powering your electronics any time, anywhere. **OPTIONAL "OFF THE GRID" SOLAR PACKAGE** includes (2) 110W flexible solar panels, 30A MPPT solar charge controller and 1,200W pure sine wave inverter.

Dealer:



CONNECT SE



CONNECT



985 N 900 W SHIPSEWANA, IN 46565

E: KZ@KZ-RV.COM

WWW.KZ-RV.COM

Due to continual research and advances, manufacturer reserves the right to change specifications, design, price, and equipment without notice, and assumes no responsibility for any error in this literature. Some items shown are not included as standard or optional equipment.

©2022KZ | 00/00/22 | 00M