



RECREATIONAL
VEHICLES

SPORTSMEN

DESTINATION TRAILERS & FIFTH WHEELS



SPORTSMEN DESTINATION TRAILER KEY FEATURES:

- Climate package
- 5/8" Tongue & groove plywood floor
- 18 CU FT residential refrigerator
- 70"x 80" King bed
- Washer/dryer prep

SPORTSMEN FIFTH WHEEL KEY FEATURES:

- Solar roof prep
- Climate package: insulated, heated & enclosed underbelly
- 1-1/4" Accessory hitch
- Equa-Flex suspension
- Flip-up entry step



The KZ **TRUE 2 WARRANTY** is a 2-year hitch-to-bumper limited warranty that's true to its name. The gold standard in RV protection, True 2 provides double the coverage of the industry norm. Plus, our warranty is backed by the craftsmanship and quality we're known for, so you can Go. Camp. Live. Wherever your adventure takes you, know that you're covered in your KZ.

2023
DÉCOR

GUNMETAL

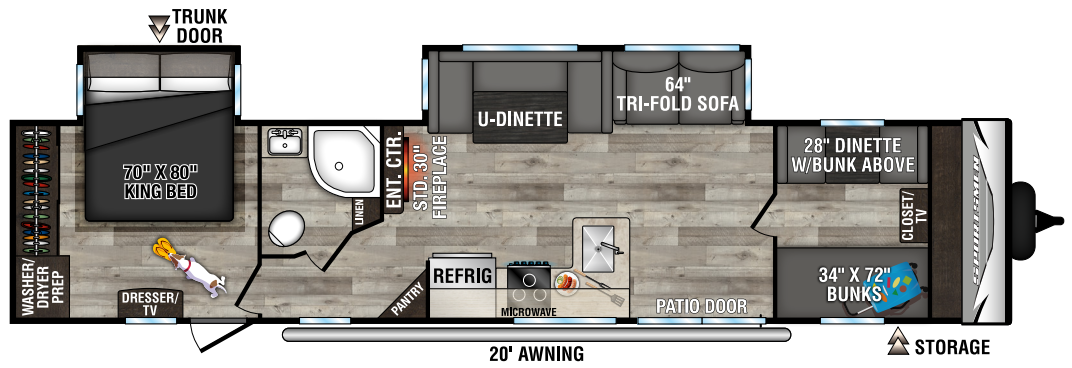
PEBBLE



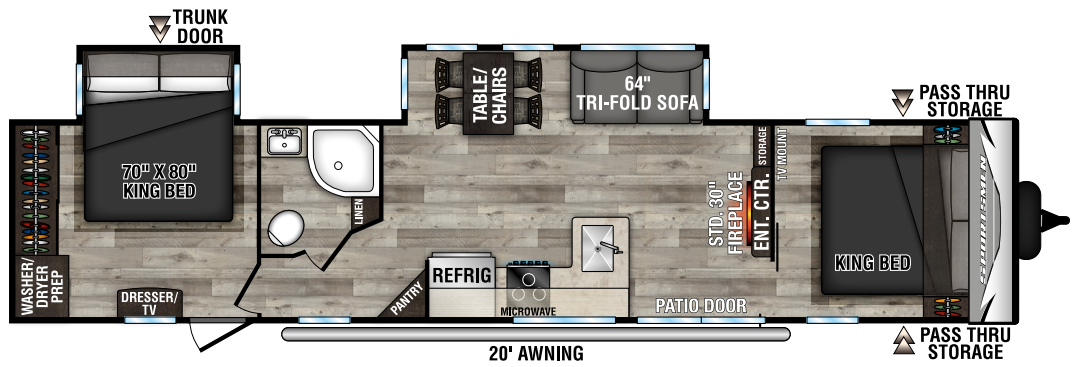
2023 SPORTSMEN TRAVEL TRAILERS



364BH | Gunmetal décor



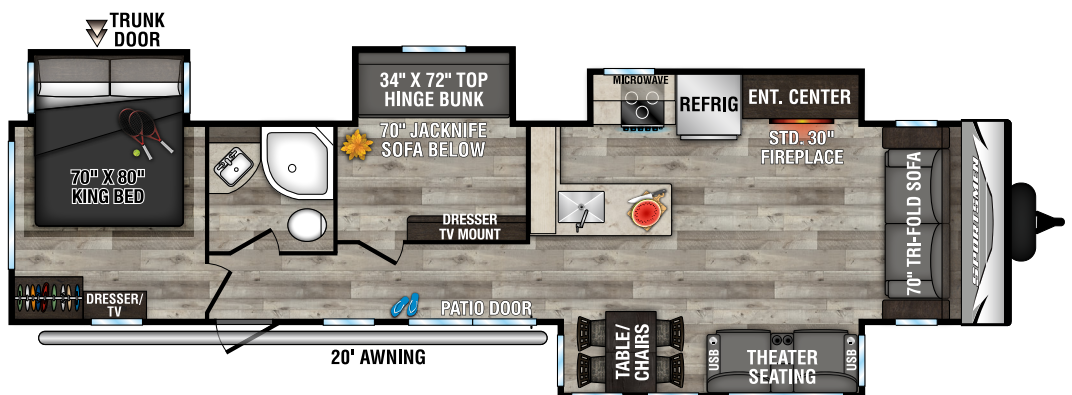
362BH UVW - 8,330 | Exterior Length - 40' 9" | Sleeps - 10



362DB UVW - 8,330 | Exterior Length - 40' 9" | Sleeps - 6

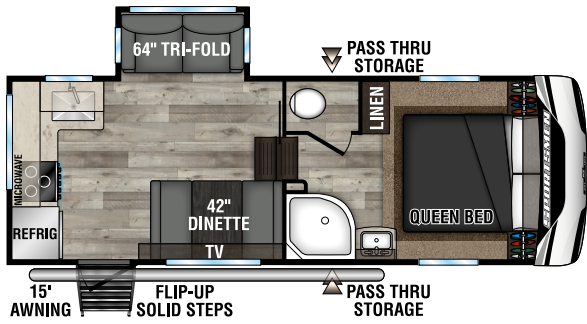


363FL UVW - 8,860 | Exterior Length - 40' 9" | Sleeps - 4

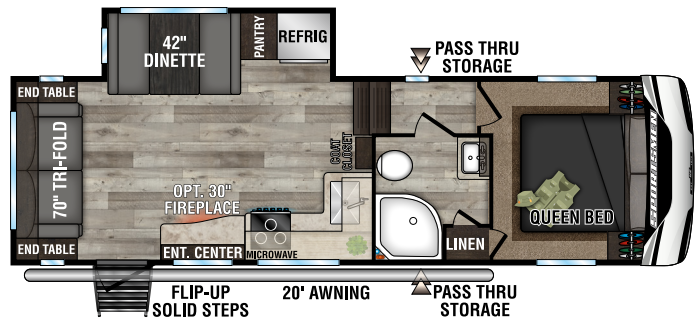


364BH UVW - 9,400 | Exterior Length - 41' 2" | Sleeps - 6

2023 SPORTSMEN FIFTH WHEELS



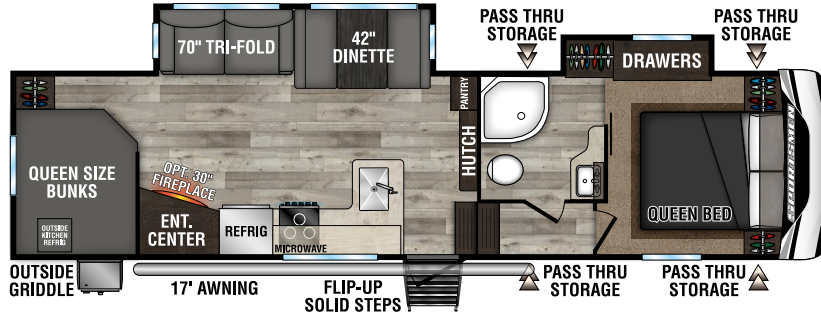
231RK UVW - 6,200 | Exterior Length - 24'10" | Sleeps - 5



251RL UVW - 6,860 | Exterior Length - 29' 4" | Sleeps - 5

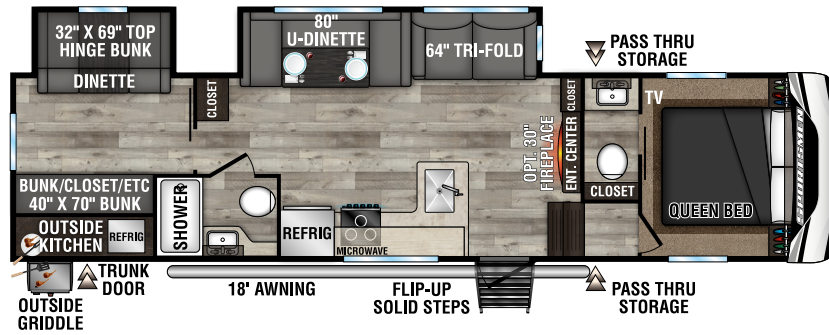
292BHK

UVW - 7,960
Exterior Length - 34'10"
Sleeps - 9



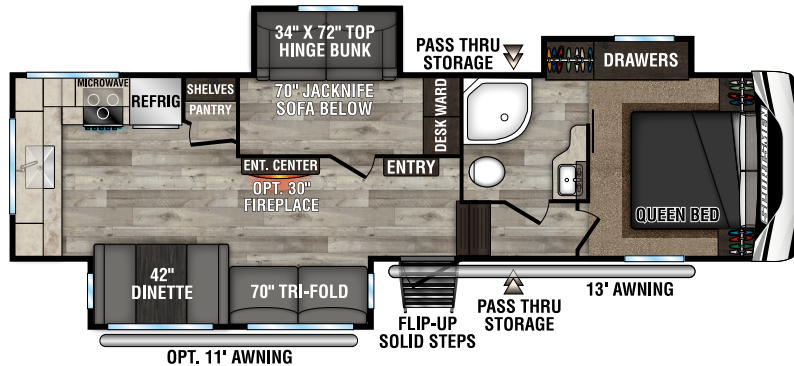
302BHK

UVW - 8,680
Exterior Length - 35' 9"
Sleeps - 10



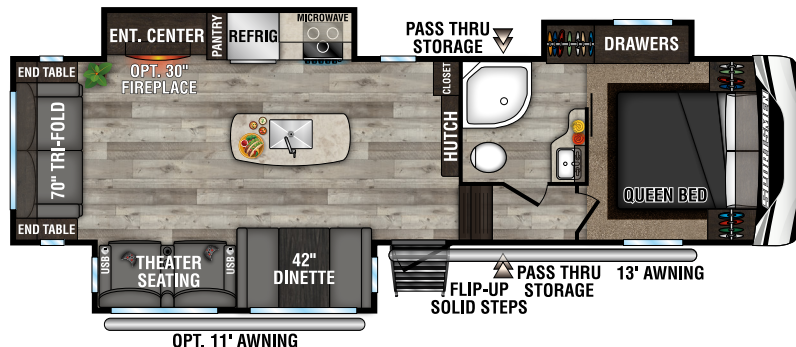
303MB

UVW - 8,720
Exterior Length - 34' 2"
Sleeps - 7



303RL

UVW - 8,720
Exterior Length - 34' 2"
Sleeps - 5



2023 SPORTSMEN DESTINATION TRAILERS & FIFTH WHEELS

STANDARDS

- 5/8" Tongue & Groove Plywood Floor
- Aerodynamic Front Profile
- Enclosed Pin Box
- 3/8" Fully Walk-On Roof Decking
- 1-Piece, Seamless, Walk-on, Tufflex Roofing Material w/Lifetime Warranty
- Awning w/Drip Rail & Spouts
- Tinted Windows
- Super-Sized Panoramic Slide Room Window
- Radius Entry Door
- Smooth Screwless Baggage Doors
- LED Pass-Through Storage Light
- Cable Hookup
- Digital TV Antenna w/Booster
- Self-Adjusting Electric Brakes
- Radial Tires
- Rear Bumper w/Sewer Hose Storage
- Winter Bypass Kit
- (2) or (4) Stabilizer Jacks (model specific)
- Outside Shower
- (2) 30# Gas Bottles w/Bottle Cover
- 30 AMP Service
- Aluminum Wheels
- 13,500 BTU A/C
- 3-Burner Cooktop
- Range Hood w/12V Light & Exhaust Fan
- Microwave w/Turntable
- Oven
- Stainless Steel Sink w/High-Rise Faucet
- Roller Ball Bearing Drawer Glides
- Large Overhead Cabinets
- LED Interior Lighting
- Monitor Panel
- Built-in Medicine Cabinet w/Mirror in Bath
- Shower Surround
- Power Vent in Bath
- Skylight over Shower
- Queen Mattress
- Reversible Quilted Comforter
- Main Bedroom Roof Vent

NOTE: Options and packages can be found on the website



Added insulation to extend the camping season, with a fully enclosed, insulated and heated underbelly to protect tanks and pipes (R-9* sidewalls, R-20* roof, and R-24* floor).

*Calculated R-Value



TUFFLEX ROOFING
by Dacor Products
LIFETIME WARRANTY!

DESTINATION TRAILERS

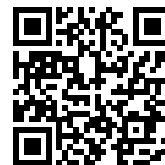
FIFTH WHEELS

Sportsmen	362BH	362DB	363FL	364BH	231RK	251RL	292BHK	302BHK	303MB	303RL
UVW (Unloaded Vehicle Weight)*	8,330	8,330	8,860	9,400	6,200	6,860	7,960	8,680	8,720	8,720
Dry Hitch Weight*	1,220	1,200	1,560	1,810	950	1,130	1,440	1,340	1,590	1,420
Dry Axle Weight*	7,110	7,130	7,300	7,590	5,250	5,730	6,520	7,340	7,130	7,300
CCC (Cargo Carrying Capacity)	2,130	2,130	1,600	1,060	1,300	1,640	2,040	1,320	1,280	1,280
GVWR	10,460	10,460	10,460	10,460	7,500	8,500	10,000	10,000	10,000	10,000
Interior Height	82"	82"	82"	82"	75"	75"	75"	75"	75"	75"
Exterior Height w/ A/C	11' 4"	11' 4"	11' 4"	11' 4"	12' 5"	12' 5"	12' 5"	12' 5"	12' 5"	12' 5"
Exterior Width	96"	96"	96"	96"	96"	96"	96"	96"	96"	96"
Exterior Length**	40' 9"	40' 9"	40' 9"	41' 2"	24' 10"	29' 4"	34' 10"	35' 9"	34' 2"	34' 2"
Refrigerator (cu. feet)	18	18	18	18	8	8	8	8	8	8
Water Heater Cap. (gal. G/E w/DSI)	6	6	6	6	6	6	6	6	6	6
Fresh Water Cap. (gal.)	45	45	45	45	45	45	45	45	45	45
Waste Water Cap. (gal.)	32	32	32	32	50	50	50	64	50	50
Gray Water Cap. (gal.)	64	64	64	64	82	50	50	32	82	50
1/2 Bath Cap. (gal.)	N/A	N/A	N/A	N/A	N/A	N/A	N/A	40	N/A	N/A
LP Gas Cap. (lbs.)	60	60	60	60	60	60	60	60	60	60
Furnace BTUs (1,000s)	30	30	30	30	30	30	30	30	30	30
Tire Size	15"	15"	15"	15"	15"	16"	16"	16"	16"	16"
Awning	20'	20'	18'	20'	15'	20'	17'	18'	13'/11' opt.	13'/11' opt.

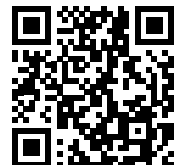
*This weight reflects the rolling average unit weight for each model. Your trailer weight will vary according to optional equipment.

**For travel trailers, exterior length is measured from rear of bumper to leading edge of coupler. For fifth wheels, exterior length is measured from rear of bumper to center of coupler.

Dealer: **RVIA**



SPORTSMEN TRAVEL TRAILERS



SPORTSMEN FIFTH WHEELS



985 N 900 W SHIPSEWANA, IN 46565

E: KZ@KZ-RV.COM

WWW.KZ-RV.COM

Due to continual research and advances, manufacturer reserves the right to change specifications, design, price, and equipment without notice, and assumes no responsibility for any error in this literature. Some items shown are not included as standard or optional equipment.

©2022KZ | 00/00/22 | 00M