



RECREATIONAL  
VEHICLES

# DURANGO

FULL PROFILE LUXURY FIFTH WHEELS



D280RKD | Birch décor

## KEY FEATURES:

- Off-the-grid solar package
- Solar prep on roof for easy expandable prep
- King-size bed standard
- Smart TVs
- 30" convection microwave
- 24" oven with four burner range



The KZ **TRUE 2 WARRANTY** is a 2-year hitch-to-bumper limited warranty that's true to its name. The gold standard in RV protection, True 2 provides double the coverage of the industry norm. Plus, our warranty is backed by the craftsmanship and quality we're known for, so you can Go. Camp. Live. Wherever your adventure takes you, know that you're covered in your KZ.





# 2024 DURANGO FIFTH WHEELS

D301RLT | Mink décor



## 2024 DÉCOR



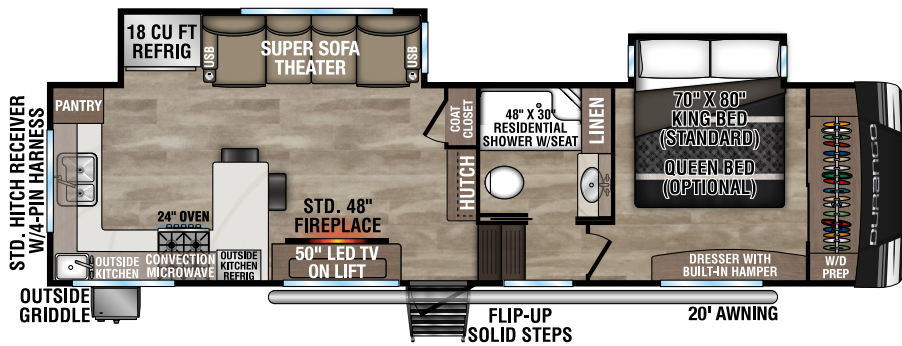
Fifth Wheels	D280RKD	D301RLT	D311BHD	D321RKT	D326RLT	D333RLT	D348BHF	D349DBF
UVW (Unloaded Vehicle Weight)*	9,960	10,620	10,460	10,710	10,970	10,800	13,310	12,310
Dry Hitch Weight*	1,920	1,980	2,000	2,040	1,840	2,030	2,290	2,440
Dry Axle Weight*	8,040	8,640	8,460	8,670	9,130	8,770	11,020	9,870
CCC (Cargo Carrying Capacity)	3,035	2,375	2,535	2,285	2,025	2,195	1,685	2,685
GVWR	12,995	12,995	12,995	12,995	12,995	12,995	14,995	14,995
Exterior Height w/ A/C	12' 8"	12' 6"	12' 8"	12' 8"	12' 9"	12' 8"	12' 11"	12' 11"
Exterior Width	96"	96"	96"	96"	96"	96"	96"	96"
Exterior Length**	32' 11"	34' 3"	36' 11"	34' 10"	37' 7"	37' 10"	42' 2"	42' 4"
Refrigerator (cu. feet)	18	18	18	18	18	18	18	18
Water Heater Cap. (on-demand tankless)	***	***	***	***	***	***	***	***
Fresh Water Cap. (gal.)	76	76	76	76	76	76	76	76
Waste Water Cap. (gal.)	50	50	50	50	50	50	50	50
Gray Water Cap. (gal.)	90	50	50	90	50	50	100	100
1/2 Bath Cap. (gal.)	N/A	N/A	N/A	N/A	N/A	N/A	50	50
LP Gas Cap. (lbs.)	60	60	60	60	60	60	60	60
Furnace BTUs (1,000s)	35	35	35	35	35	35	35	35
Tire Size	16"	16"	16"	16"	16"	16"	17.5"	17.5"
Awning	20'	16'/10' 6" opt.	18'/14' opt.	16'	17'	18'/11' opt.	16'/11' opt.	16'/10' 6" opt.

\*This weight reflects the rolling average unit weight for each model. Your trailer weight will vary according to optional equipment.

\*\*Exterior length is measured from rear of bumper to center of coupler.

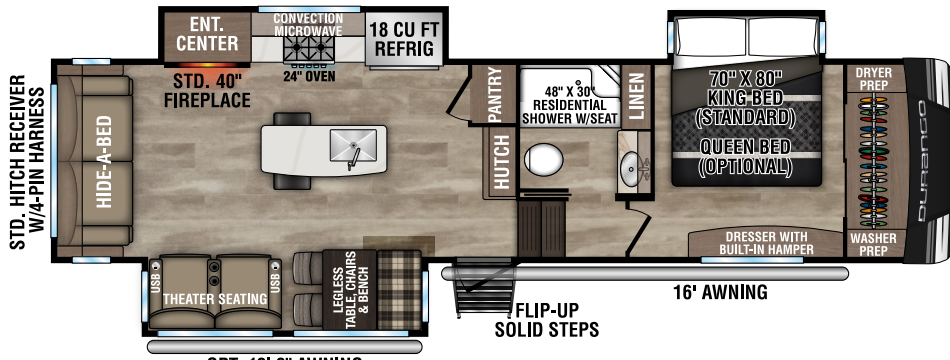
\*\*\*Infinite supply.

# 2024 DURANGO FIFTH WHEELS

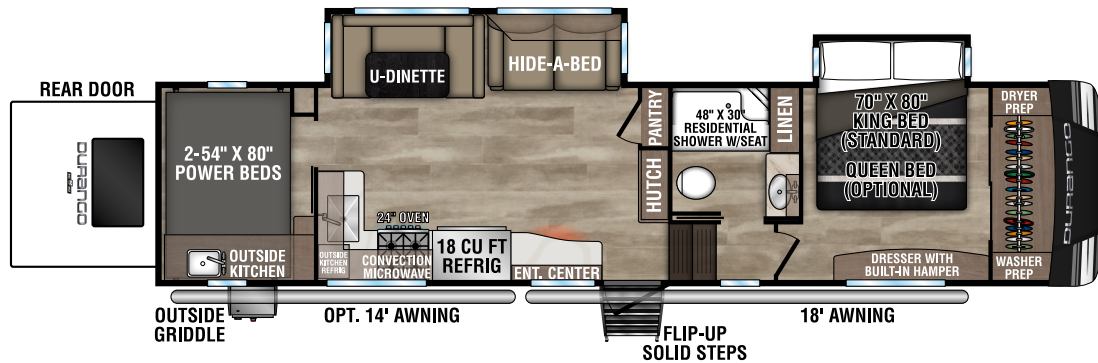


**NEW**

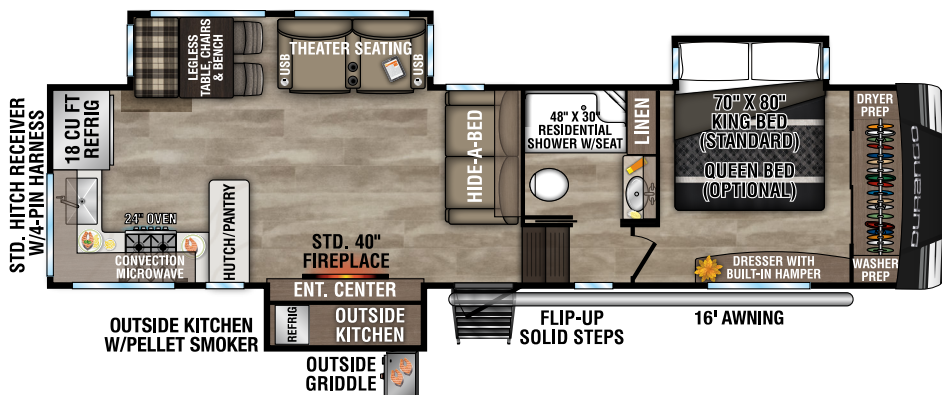
**D280RKD** UVW - 9,960 | Exterior Length - 32' 11" | Sleeps - 3



**D301RLT** UVW - 10,620 | Exterior Length - 34' 3" | Sleeps - 4



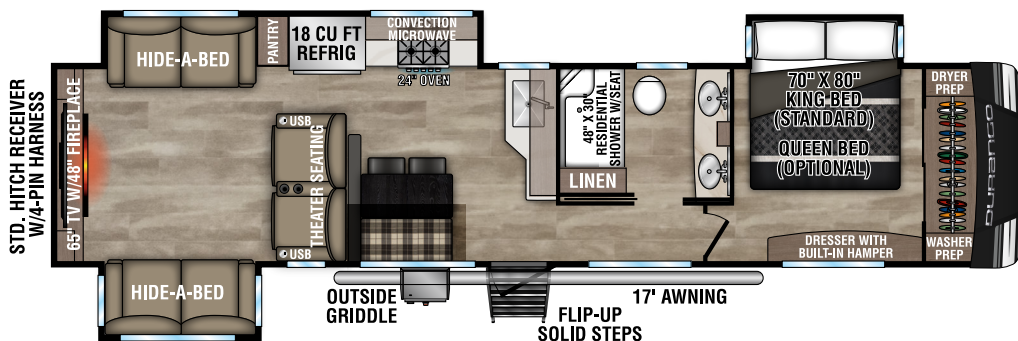
**D311BHD** UVW - 10,460 | Exterior Length - 36' 11" | Sleeps - 9



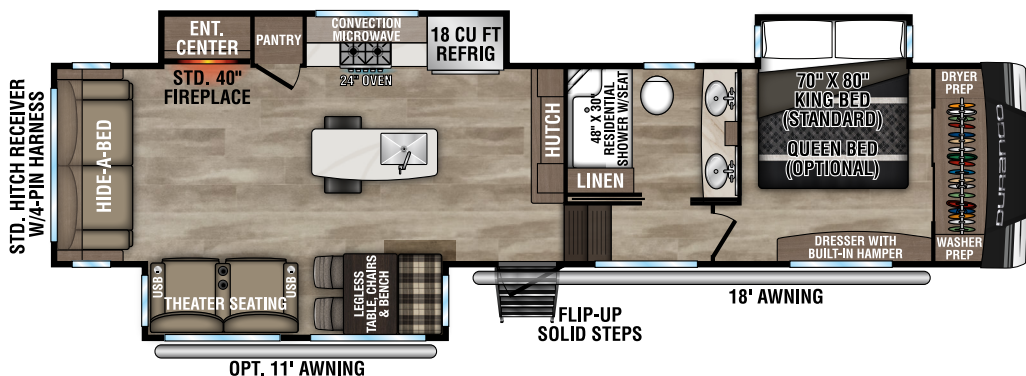
**D321RKT** UVW - 10,710 | Exterior Length - 34' 10" | Sleeps - 4



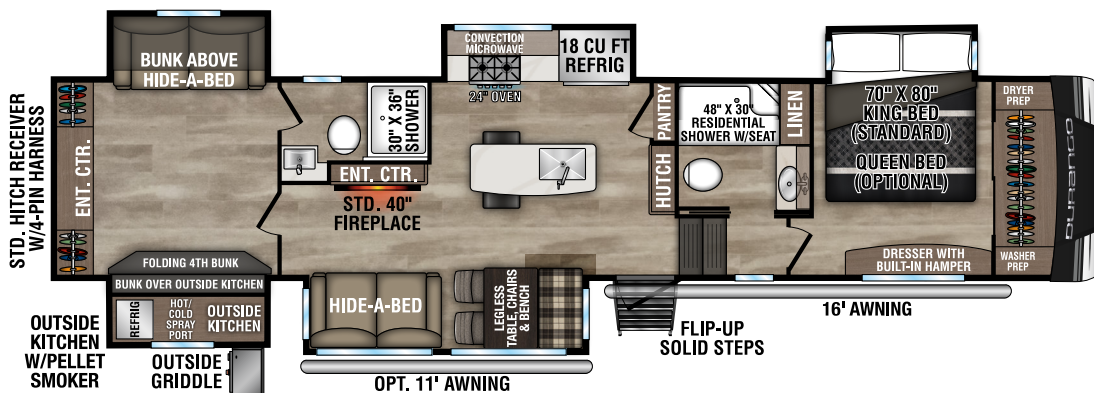
# 2024 DURANGO FIFTH WHEELS



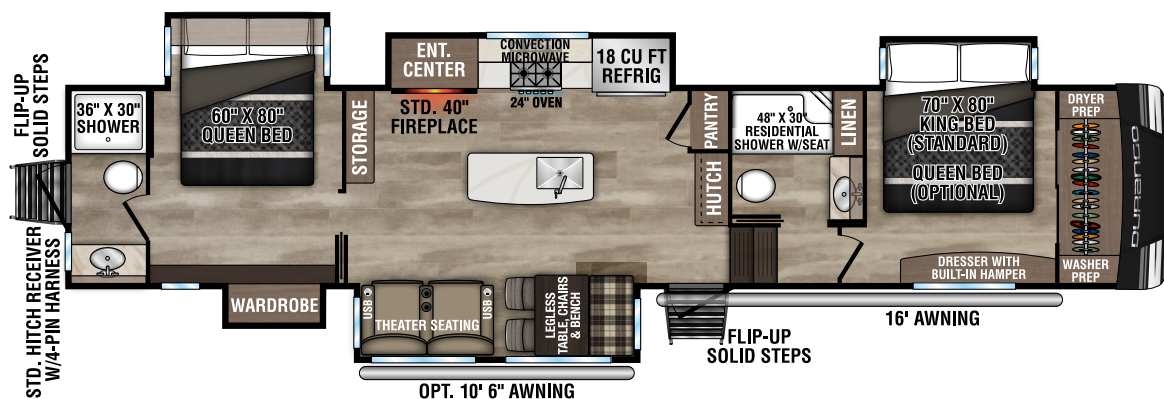
D326RLT UVW - 10,970 | Exterior Length - 37' 7" | Sleeps - 6



D333RLT UVW - 10,800 | Exterior Length - 37' 10" | Sleeps - 4



D348BHF UVW - 13,310 | Exterior Length - 42' 2" | Sleeps - 9



D349DBF UVW - 12,310 | Exterior Length - 42' 4" | Sleeps - 4



# 2024 DURANGO INTERIOR & EXTERIOR FEATURES



**THEATER SEATING** with cupholders, USB plug, heat, massage and power recline/decline.



**BATHROOM** has stainless steel sinks, porcelain foot-flush toilet, residential one-piece fiberglass shower stall w/glass doors, shower skylight and plenty of drawer and cabinet space.



**18 CU FT RESIDENTIAL REFRIGERATOR** with temperature controls and easy slide-out freezer drawer below.

**SMART LED TV** JBL 2.0 soundbar with Bluetooth wireless connectivity and cozy ambience from the **40-INCH WIDE-VIEW FIREPLACE.**



**LUXURY BEDROOM** features a 70 x 80-inch king bed, overhead storage, USB ports, outlets and oversized light switches are all within easy reach.



**OUTSIDE KITCHEN** features a pellet smoker, table, and griddle. (D321RKT, D348BHF)



Taking our solar power package to the next level. Roof-mounted solar prep standard. **STANDARD "OFF THE GRID" SOLAR PACKAGE** includes (2) 220W solar panels, 30A MPPT solar charge controller w/MPPT remote panel, 2,000W pure sine wave inverter making all outlets "hot".



The Durango **TOWING PACKAGE** features a 3,000 LB tow rating, 300 LB hitch rating, 4-pin wire harness connection and 2" towing receiver hitch.



**DELUXE CONVENIENCE CENTER**  
Centralized command center is well-lit, heated & all systems conveniently located.

# 2024 DURANGO STANDARDS

## CONSTRUCTION FEATURES

- Steel Powder Coated I-Beam w/Drop-Frame Pass-Thru Storage
- R-13\* 2" Block Foam Bonded Sidewalls w/EGS Metal Backing Strips (to support all int. cabinets)
- Lamilux® Gelcoat Fiberglass
- Fully-Insulated Sliderooms
- 1-Piece, Seamless, Walk-on, Tufflex Roofing Material w/Lifetime Warranty
- 5/8" Tongue & Groove, Screwed & Glued Plywood Floor Decking
- Fully-Vented Attic System
- Completely Heated Water System
- Pex® In-Floor Heated Waterlines & Kitchen Gray Pipes (all waterlines & drainlines are located above all insulation)
- Fully Heated & Enclosed Underbelly
- Radius Front Cap (for increased turning radius on short bed trucks)
- Extra-Reinforced Heavy-Duty Front Fiberglass Cap
- All-Weather Insulation Package (upgrades roof, floor, ceiling, endcaps & tanks to R-38\*)

## EXTERIOR FEATURES

- Dexter® Axles w/Self Adjusting Brakes & Height Adjusting Hangers
- Nev-R-Adjust® Brakes Flyer
- 8-Lug Heavy-Duty Aluminum Rims w/16" E-Range Nitrogen-Filled Radial Tires (H-range on select models)
- 100% Exterior LED Running Lights & Taillights
- LED Front Docking Light & Sewer Hookup Light
- Electric Power Awning w/LED Light Strip
- (2) 30 LB. Propane Bottles on Same Side of Coach for Easy Access
- Side-Mounted Sealed Battery Compartment
- Partially Painted Front Cap
- 50 AMP Service w/Marine Power Cord
- 15,000 BTU Ducted Roof A/C w/Pre-Wire for Optional 15,000 BTU Bedroom A/C
- 3" x 14" Foam-Core In-Floor Straight-Line Heating System w/35,000 BTU Furnace
- Deluxe Heated Water Convenience Center (includes black tank flush, power fresh tank water fill, winterizing system, outside shower)
- Fully-Finished, Heated & Sealed Basement Storage Compartment
- Roof Ladder
- No-Slide Rubberized Basement Flooring
- Dual Lock Basement Storage Slam Latches
- Satellite Pre-Wire (roof & ground)
- Pre-Wire for Exterior TV
- Full-Perimeter Rain Gutter System (incl. rear & additional gutters over sliderooms)
- LP Quick Connect
- Undermount Spare Tire

## LIVING ROOM/KITCHEN FEATURES

- Heavy-Duty 100 LB Drawer Glides on Every Drawer
- Baltic Birch Drawer Boxes
- 5" Black Cabinet Hardware
- XL Toggle Light Switches
- Large Ceiling Crown Molding
- All LED Ceiling & Cabinet Lights w/Multiple On/Off Switches
- Deluxe Residential-Style Furniture
- HD Flat Panel TV w/Swing Arm Bracket & Storage behind TV (most models)
- Ceiling Fan (where applicable)
- Solid-Surface Kitchen Countertops & Sink Covers w/Large Handholds
- Residential Stainless Steel Sink
- Pullout High Arching Faucet
- Kitchen Window (most models)
- All-Wood Lumber Core Screwed Cabinets w/Hardwood Doors
- Adjustable Pantry Shelves (where applicable)
- All Kitchen OH Cabinets Include Shelf
- 4" High Density Foam Cushions on all Booth Dinettes

## BATHROOM/BEDROOM FEATURES

- Residential 1-Piece Fiberglass Shower Stall w/Built-in Seat & Glass Doors
- Shower Skylight
- Porcelain Foot-Flush Toilet
- All LED Lights in Bed & Bath w/Multiple Large Switches
- Vent Fan in all Baths
- Large Linen Closet in Every Bathroom
- One-Level, Full-Height Bedrooms
- Headboard w/Power Outlet Near Bed
- XL Under-Bed Storage
- Luxurious Bedspread
- Dual Drawers, Large Hanging Space
- Washer & Dryer Prep in Front Closet
- Bedroom TV Pre-Wire

\*Calculated R-Value

NOTE: Options and Packages can be found on the website

Dealer:

**RVIA**

**DEXTER**

Portions of this brochure were used with the expressed authority of Dexter Axle, but Dexter Axle is not responsible for the accuracy of the information contained herein.



**KZ** RECREATIONAL VEHICLES

985 N 900 W SHIPSEWANA, IN 46565

E: KZ@KZ-RV.COM

WWW.KZ-RV.COM

Due to continual research and advances, manufacturer reserves the right to change specifications, design, price, and equipment without notice, and assumes no responsibility for any error in this literature. Some items shown are not included as standard or optional equipment.

©2023KZ | 12/04/23 | web