



RECREATIONAL
VEHICLES

SPORTSMEN CLASSIC

ULTRA LIGHTWEIGHT TRAVEL TRAILERS



DICOR TUFFLEX PVC roof membrane w/lifetime warranty and now with 3/8" walkable roof



Standard **ROOF SOLAR PREP CONNECTION** makes it a breeze for dealers to install a solar panel.



The **OFF-ROAD PACKAGE** includes 15" mud tires with aluminum rims, extra ground clearance, an electronically controlled heated holding tank, and double entry step.



181BH | Ashwood décor

KEY FEATURES:

- 3/8" Fully walkable roof
- Dicor Tufflex PVC roof membrane w/lifetime warranty
- 4 Scissor style stabilizer jacks
- Walk-around queen bed (select models)
- Spacious shower



Shown with optional front window

| Ultra Lightweight Travel Trailers | 130RB | 160QB | 160RBT | 170MB | 180BH | 180RBT | 180TH | 181BH | 181SS | 191BHK |
|--|--------|-------|--------|-------|--------|--------|--------|--------|--------|--------|
| UVW (Unloaded Vehicle Weight)* | 2,350 | 2,960 | 2,850 | 2,980 | 2,880 | 3,220 | 3,210 | 3,180 | 3,570 | 3,490 |
| Dry Hitch Weight* | 270 | 400 | 330 | 430 | 290 | 420 | 450 | 400 | 450 | 460 |
| Dry Axle Weight* | 2,080 | 2,560 | 2,520 | 2,550 | 2,590 | 2,800 | 2,760 | 2,780 | 3,120 | 3,030 |
| CCC (Cargo Carrying Capacity) | 450 | 540 | 650 | 520 | 620 | 1,280 | 1,790 | 470 | 830 | 510 |
| GVWR | 2,800 | 3,500 | 3,500 | 3,500 | 3,500 | 4,500 | 5,000 | 3,650 | 4,400 | 4,000 |
| Interior Height | 78" | 78" | 78" | 78" | 78" | 78" | 78" | 78" | 78" | 78" |
| Exterior Height w/o A/C (unless noted)** | 107" | 107" | 107" | 112" | 107" | 118" | 107" | 112" | 112" | 112" |
| Exterior Width | 84" | 84" | 84" | 84" | 84" | 84" | 84" | 84" | 84" | 84" |
| Exterior Length*** | 16' 9" | 22' | 19' 2" | 22' | 21' 5" | 21' 9" | 21' 8" | 21' 5" | 22' 2" | 22' 1" |
| Refrigerator (cu. feet) | 3 | 8 | 8 | 8 | 8 | 8 | 8 | 8 | 8 | 8 |
| Water Heater Cap. (gal. LP w/DSI) | 6 | 6 | 6 | 6 | 6 | 6 | 6 | 6 | 6 | 6 |
| Fresh Water Cap. (gal.) | 20 | 20 | 20 | 20 | 20 | 20 | 20 | 20 | 20 | 20 |
| Waste Water Cap. (gal.) | 26 | 26 | 26 | 26 | 26 | 26 | 26 | 26 | 26 | 26 |
| Gray Water Cap. (gal.) | 26 | 26 | 26 | 26 | 26 | 26 | 26 | 26 | 26 | 26 |
| LP Gas Cap. (lbs.) | 20 | 20 | 20 | 20 | 20 | 20 | 20 | 20 | 20 | 20 |
| Furnace BTUs (1,000s) | 20 | 20 | 20 | 20 | 20 | 20 | 20 | 20 | 20 | 20 |
| Tire Size | 15" | 15" | 15" | 15" | 15" | 15" | 15" | 15" | 15" | 15" |
| Awning | 10' | 12' | 12' | 12' | 13' | 13' | 13' | 13' | 13' | 14' |

*This weight reflects the rolling average unit weight for each model. Your trailer weight will vary according to optional equipment. **This exterior height is with A/C. *** Exterior length is measured from rear of bumper to leading edge of coupler.

2024 SPORTSMEN CLASSIC TRAVEL TRAILERS

STANDARDS

- KZ Exclusive Tough Shield .024 Exterior Metal
- R-7* Insulation in Sidewalls
- Front Diamond Plate
- Tinted Windows
- Radial Tires
- Self-Adjust Electric Brakes
- Rear Bumper w/Sewer Hose Storage
- Digital TV Antenna
- Cable Hookup
- City Water Fill
- 12V Converter w/Charger
- LP Tank
- Shower & Toilet
- 6-Gallon LP DSI Water Heater
- Rail-Style Cabinet Doors w/Modern Handles
- Overhead Cabinets
- LED Interior Lights
- Tank Monitor Panel
- Flush Mount 2-Burner Cooktop w/Glass Top
- Microwave
- 8 CU FT 12V Refrigerator (N/A 130RB)
- Single-Bowl Sink

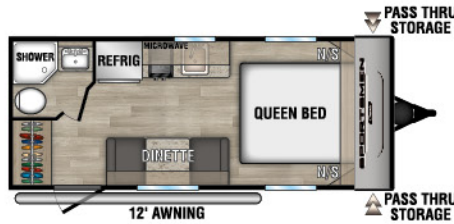
*Calculated R-Value

NOTE: Options and packages can be found on the website



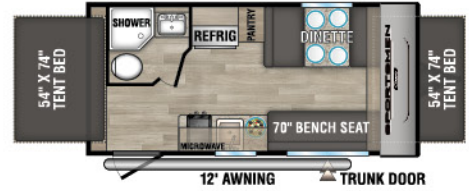
130RB

UWV - 2,350 | Exterior Length - 16' 9" | Sleeps - 2



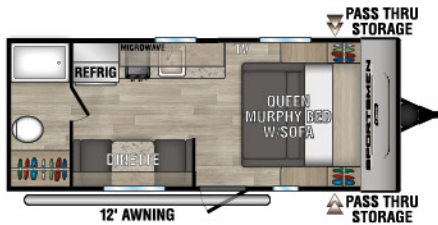
160QB

UWV - 2,960 | Exterior Length - 22' | Sleeps - 3



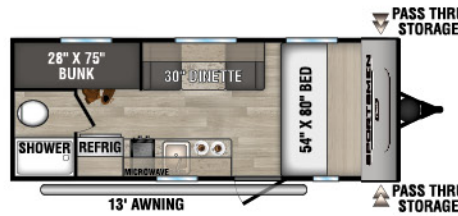
160RBT

UWV - 2,850 | Exterior Length - 19' 2" | Sleeps - 6



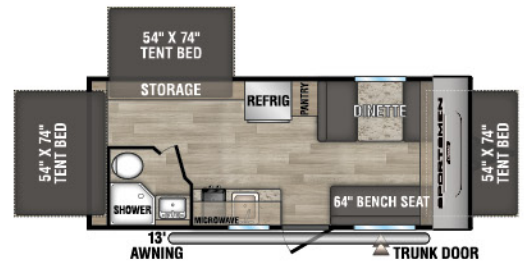
170MB

UWV - 2,980 | Exterior Length - 22' | Sleeps - 3



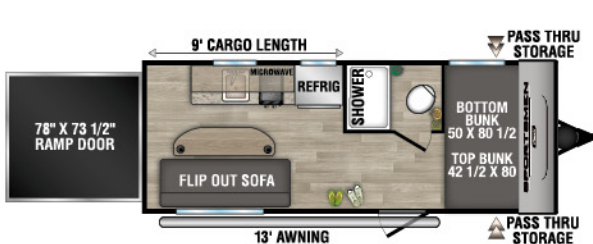
180BH

UWV - 2,880 | Exterior Length - 21' 5" | Sleeps - 4

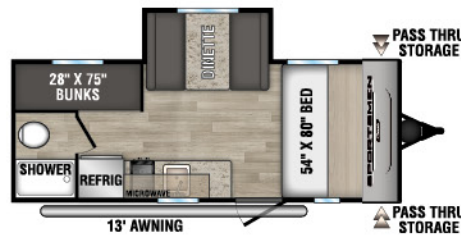


180RBT

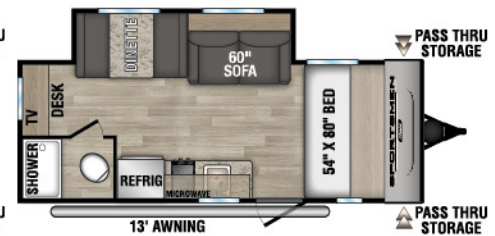
UWV - 3,220 | Exterior Length - 21' 9" | Sleeps - 8



180TH TOY HAULER UWV - 3,210 | Exterior Length - 21' 8" | Sleeps - 4



181BH UWV - 3,180 | Exterior Length - 21' 5" | Sleeps - 5



181SS UWV - 3,570 | Exterior Length - 22' 2" | Sleeps - 4



191BHK

UWV - 3,490 | Exterior Length - 22' 1" | Sleeps - 5



Dealer:



985 N 900 W SHIPSEWANA, IN 46565

E: KZ@KZ-RV.COM

WWW.KZ-RV.COM

Due to continual research and advances, manufacturer reserves the right to change specifications, design, price, and equipment without notice, and assumes no responsibility for any error in this literature. Some items shown are not included as standard or optional equipment.

©2023KZ | 11/03/23 | web