

GIRARD - The Leader in Tankless Technology

Girard's GSWH-2

The #1 Selling Tankless Water Heater!



Digital User Control Panel (UCP)

NEW!

Trim Ring Option!



Can now be added to the door to give a "finished" look

- Applicable for Door Kits: 2GWHD & 2GWHDB
- Available in Black or White



- **Hinged Door Design**
Easy Latch closing.
No more twist latches!
- **Three Door Kits**
For easy replacement of any tank water heater

On-Board Micro-Processor Monitors:

- Inlet Water Flow and Temperature
- Outlet Water Temperature
- Regulates Burner to the Set **HOT** Water Temp.
- Can add COLD Water to the Desired Temp.
- 42,000 BTUs - Optimum for Performance
- Water Temperature Settings (95° to 124°)
- Fahrenheit or Centigrade Selection
- Built-in Freeze Protection for Winter Use
- Fan Icon
- Water Flow Icon
- Flame Icon
- Error Codes for Easy Diagnostics



ETL certified and approved for the U.S.A. and Canada.



GIRARD PRODUCTS, LLC.

www.greenproducts.com

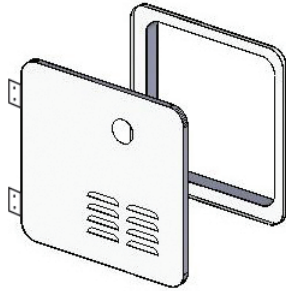
Girard Products LLC., 1361 Calle Avanzado, San Clemente, CA 92673
Toll Free: 866.559.1221 • Local: 949.259.4024 • Fax: 949.276.5502

GIRARD - The Leader in Tankless Technology

Four door kits for easy replacement of a tank water heater...

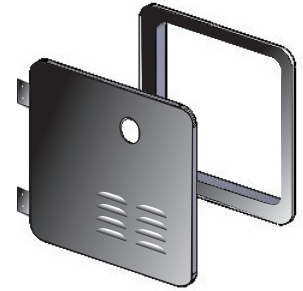
DOOR/FLANGE ASSEMBLY Part # 2GWHD POLAR WHITE

For new installations. Also applicable conversion door for the Suburban 6 gallon water heater.



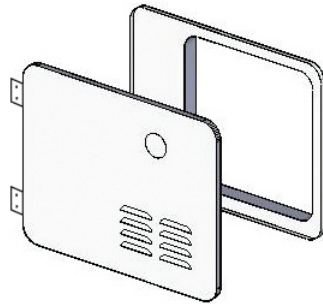
DOOR/FLANGE ASSEMBLY Part # 2GWHDB BLACK

For new installations. Also applicable conversion door for the Suburban 6 gallon water heater.



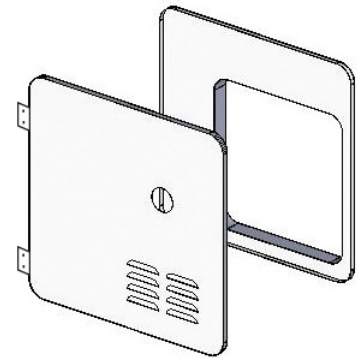
DOOR/FLANGE ASSEMBLY Part # 2GWHDA6 POLAR WHITE

Applicable conversion door for the Atwood 6 gallon water heater.



DOOR/FLANGE ASSEMBLY CONVERSION Part # 2GWHAS10 POLAR WHITE

Applicable conversion door for the Atwood or Suburban 10 gallon water heater.

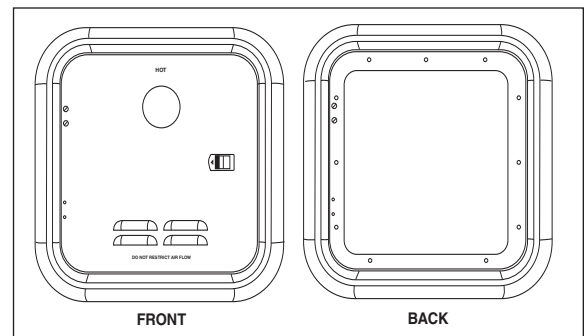


The table below summarizes the main performance specifications of the Model GSWH-2

BTU/HR	42,000 BTU
Fuel	Propane (LP Gas)
Inlet Pressure	11" WCI Min to 14" WCI Max
Manifold Pressure	1.5" - 7.2" WCI
Power Input	12VDC < 3 amp
Water Operating Pressure	125 PSI Max
Dimensions	Width: 12.5" • Height: 12.5" • Depth 15.5"
Shipping Weight	24 lbs.

DOOR TRIM RING

Part #: **Description:**
2GWHDR-B Trim Ring Black (2GWHDB Door Kit)
2GWHDR-W Trim Ring White (2GWHD Door Kit)



GIRARD PRODUCTS, LLC.

Girard Products LLC., 1361 Calle Avanzado, San Clemente, CA 92673
 Toll Free: 866.559.1221 • Local: 949.259.4024 • Fax: 949.276.5502
www.greenrvproducts.com