



# Ramp 'n'

Loaded with the latest features, the new fleet of fifth-wheels with rear gar

**F**or most buyers, choosing a fifth-wheel toy hauler starts with the garage and the recreational toys. After all, the requirements for hauling a dirt bike in the back are very different from traveling with a side-by-side UTV. Once the toys roll down the ramp, the garage can double as a workshop, studio, bedroom or living room, depending on the design of the trailer and the needs of the owner.

When shopping for a new toy hauler, the foundation is the most important consideration. A good-quality frame, axles, suspension and tires are essential. Weight and carrying capacity are other critical factors.

Gross vehicle weight rating (GVWR) and hitch weight are key because the tow limits of the truck and hitch must match or exceed the toy hauler's GVWR. For those who will be towing with a full

freshwater tank, the GVWR minus the unloaded vehicle weight (UW) must be more than the weight of the water (8.3 pounds per gallon), plus everything you'll carry, from food, tools and appliances to RV upgrades and toys in the garage.

Size also matters. Long fifth-wheels can't be accommodated at some campgrounds, and large truck-and-trailer combinations are difficult to maneuver in tight spaces, including many fuel stations.

# ROI

PHOTOS: MANUFACTURERS. FLOORPLANS: ROB ROY



## KZ Venom 3911TK

The Venom 3911TK combines comfortable living with a garage that is large enough for a wide trail-style side-by-side. The G-rated tires and three 7,000-pound-rated Dexter axles can support 21,000 pounds, although the GVWR is 19,000 pounds.

Built on a traditional fifth-wheel drop frame, the toy hauler has voluminous basement storage. Water is in good supply with a 112-gallon tank, and the sizable black and gray tanks will support many days between visits to the dump station.

The bedroom houses a king bed in a slideout and ample closet and drawer space. Windows face three directions, a nice feature for watching wildlife wander through the campsite before dawn. The bathroom has a shower with a sliding door and a linen closet.

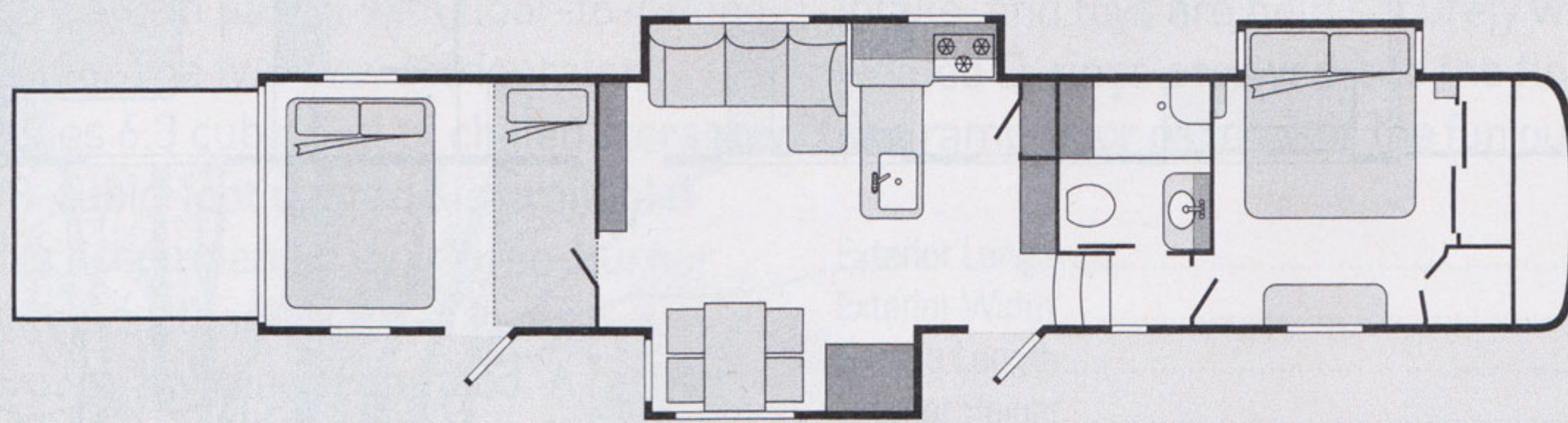
The U-shaped kitchen offers plenty of counter space and shares a slideout with a convertible sofa. An opposing slideout holds the 18-cubic-foot refrigerator and wall-mounted dining table and

freestanding chairs or optional theater seating. A loft bed above the walled-off garage opens into the living area, keeping it free from fumes.

Slideouts allow some access to the kitchen, bedroom and bathroom when retracted, which is important for quick stops. The fridge door opens just enough to grab a bite with the slides in travel mode. However, the hydraulic slideout mechanisms cannot be operated independently via wall-mounted switches and instead rely on an electronic touchpad or mobile-app interface coupled with slideout selector switches on the exterior of the trailer.

The easily lifted MORryde Zero-G ramp door converts to a patio with an optional railing and three-season door, extending the living space. A Happijac package in the garage with a power bed, two sofas and a table is an appealing option. Three E-track tie-downs anchor the toys, while 30- and 40-gallon fuel tanks keep the onboard generator and toys gassed up.

Exterior Length .....	42' 7"
Exterior Width .....	8' 5"
Garage Length .....	11'
Exterior Height .....	13' 4"
Interior Height .....	8' 6"
Freshwater Cap. ....	112 gal.
Black-/Gray-Water Cap. ....	53 gal./93 gal.
LP-Gas Cap. ....	14 gal.
UVW, Base .....	14,050 lbs.
GVWR .....	19,000 lbs.
Hitch Weight .....	3,070 lbs.
MSRP, Base .....	\$94,533
<a href="http://www.kz-rv.com">www.kz-rv.com</a>	



## ages takes the toys in style — by Emily Fagan

Then there's the style of the garage to consider. An open-box trailer, which combines garage and living space, allows for a shorter overall length or a longer garage, while an enclosed garage helps keep dirt and fumes from entering the living area. A reliable ramp door and strong tie-downs for securing the toys are crucial, and an onboard fueling station can also be a plus.

Before buying any toy hauler, it is essential to check the length, width

and height of the garage with a tape measure to make sure your toys will fit. Many toy-hauler garages are not a simple rectangle but have narrower and shorter areas due to a half bathroom, side-patio wall recess or items placed against the walls. On some models the garage floor is angled for about a foot inside the ramp door. Power sofas raised to their highest position may make the ceiling height too short for loading some toys, and three-season

patio doors and railings can shorten the length by as much as 16 inches. You'll also want to confirm that there's room to exit any drivable toy after parking it in the garage.

With these considerations in mind, we profiled four of the latest toy-hauling fifth-wheels, and spotlighted a dozen more, ranging from just over 31 feet and \$30,000 to longer than 47 feet with a price tag north of \$180,000.