

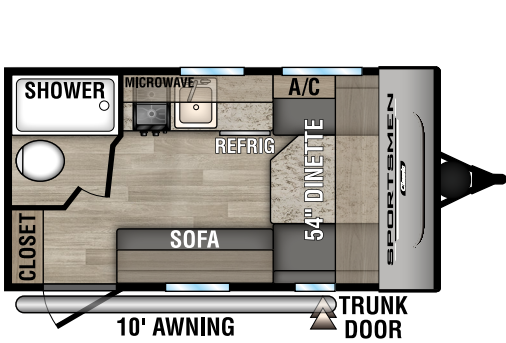


RECREATIONAL
VEHICLES

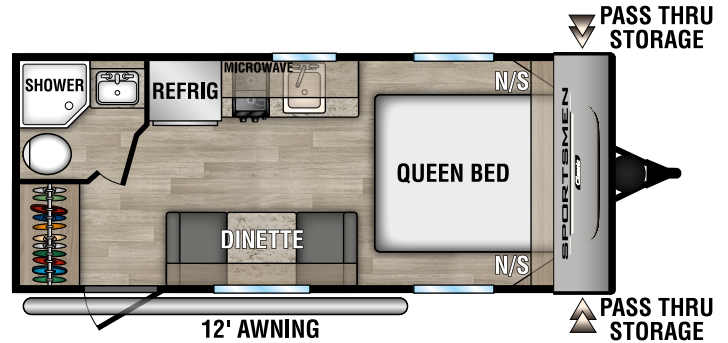
SPORTSMEN

Classic

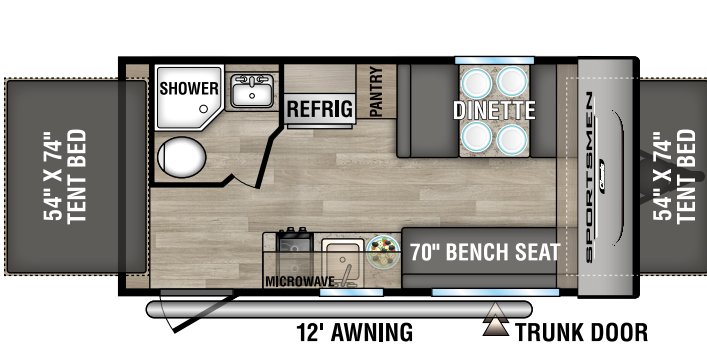
ULTRA LIGHTWEIGHT TRAVEL TRAILERS



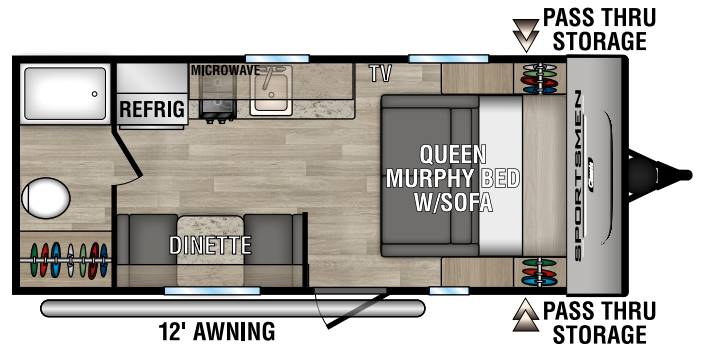
130RB U VW - 2,350 | Exterior Length - 16' 9" | Sleeps - 2



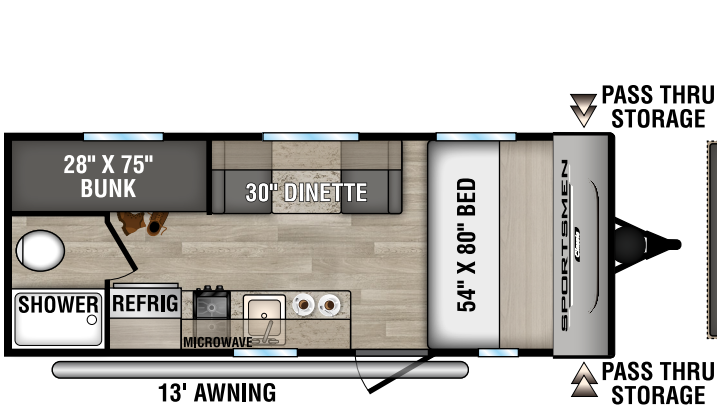
160QB U VW - 2,960 | Exterior Length - 22' | Sleeps - 3



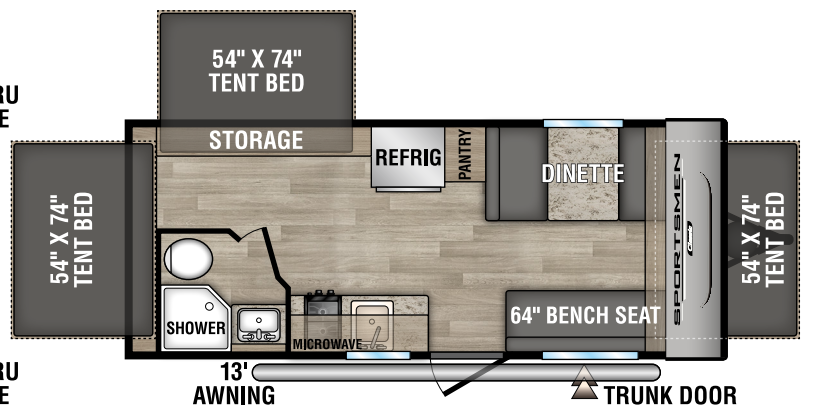
160RBT U VW - 2,850 | Exterior Length - 19' 2" | Sleeps - 6



170MB U VW - 2,980 | Exterior Length - 22' | Sleeps - 3

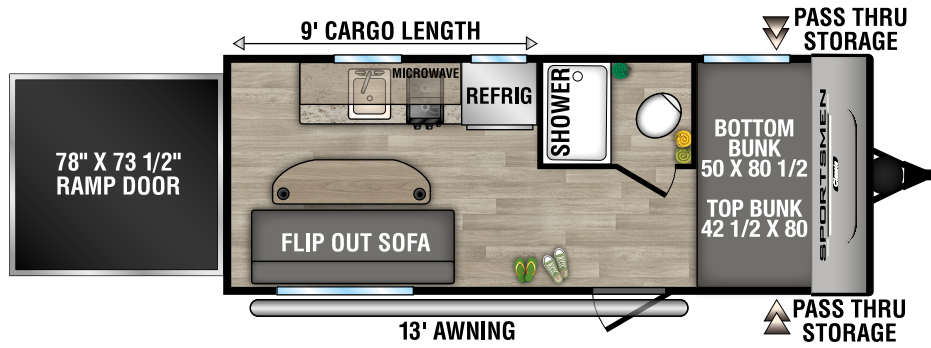


180BH U VW - 2,880 | Exterior Length - 21' 5" | Sleeps - 4

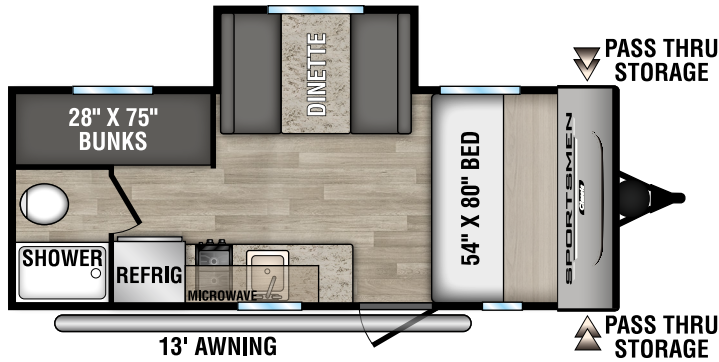


180RBT U VW - 3,220 | Exterior Length - 21' 9" | Sleeps - 8

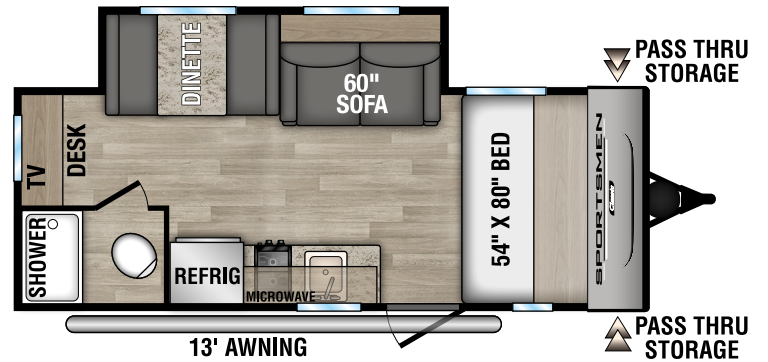
2024 SPORTSMEN CLASSIC



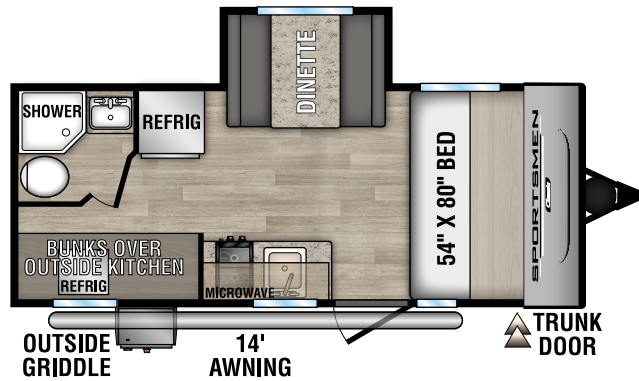
180TH TOY HAULER UVW - 3,210 | Exterior Length - 21' 8" | Sleeps - 4



181BH UVW - 3,180 | Exterior Length - 21' 5" | Sleeps - 5



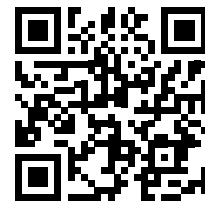
181SS UVW - 3,570 | Exterior Length - 22' 2" | Sleeps - 4



191BHK UVW - 3,490 | Exterior Length - 22' 1" | Sleeps - 5

OPTIONAL OFF-ROAD PACKAGE

- Aluminum Rims w/15" Mud Tires
- Extra Ground Clearance
- Electronically-Controlled Heated Holding Tank
- Double Entry Step (select models)



Sportsmen Classic